



All nose-in parking in Forster's eclectic Wharf Street shopping strip has now been extended to 2 hours, meaning you'll have plenty of time to browse your favourite stores, meet friends for coffee, or grab an ice-cream and take a stroll.



There's parking for every need in Forster's CBD. Choose from 15 minute quick shops, two-hour stays or all day parking spaces and enjoy every experience this beautiful shopping precinct has to offer.



See over for a range of parking options, including 15 minute quick stops and all day parking, within walking distance to shops, cafes, Main Beach and the Lake.

“  
WHARF ST  
WATERSIDE  
FORSTER  
SIMPLY UNIQUE

## Take more time to relax and enjoy **FORSTER WATERSIDE**

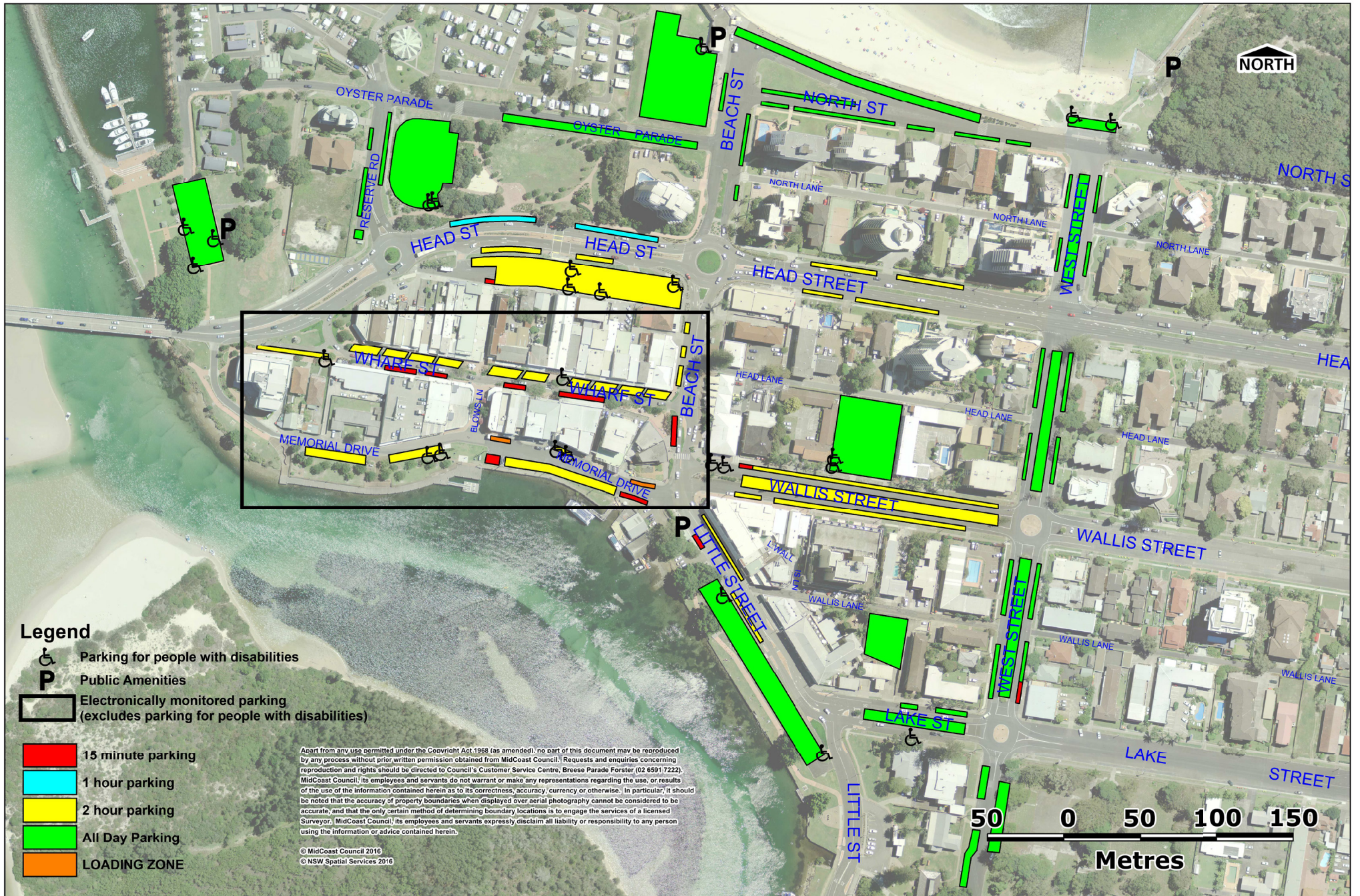


“  
WHARF ST  
WATERSIDE  
FORSTER  
SIMPLY UNIQUE

with new extended  
**2 hour parking in Wharf Street**



# Grab 15 for a quick stop, park and take more time, or stay all day



## Legend

-  Parking for people with disabilities
-  Public Amenities
-  Electronically monitored parking (excludes parking for people with disabilities)
-  15 minute parking
-  1 hour parking
-  2 hour parking
-  All Day Parking
-  LOADING ZONE

Apart from any use permitted under the Copyright Act 1968 (as amended), no part of this document may be reproduced by any process without prior written permission obtained from MidCoast Council. Requests and enquiries concerning reproduction and rights should be directed to Council's Customer Service Centre, Breese Parade Forster, (02 6591 7222). MidCoast Council, its employees and servants do not warrant or make any representations regarding the use, or results of the use of the information contained herein as to its correctness, accuracy, currency or otherwise. In particular, it should be noted that the accuracy of property boundaries when displayed over aerial photography cannot be considered to be accurate, and that the only certain method of determining boundary locations is to engage the services of a licensed Surveyor. MidCoast Council, its employees and servants expressly disclaim all liability or responsibility to any person using the information or advice contained herein.

© MidCoast Council 2016  
© NSW Spatial Services 2016

