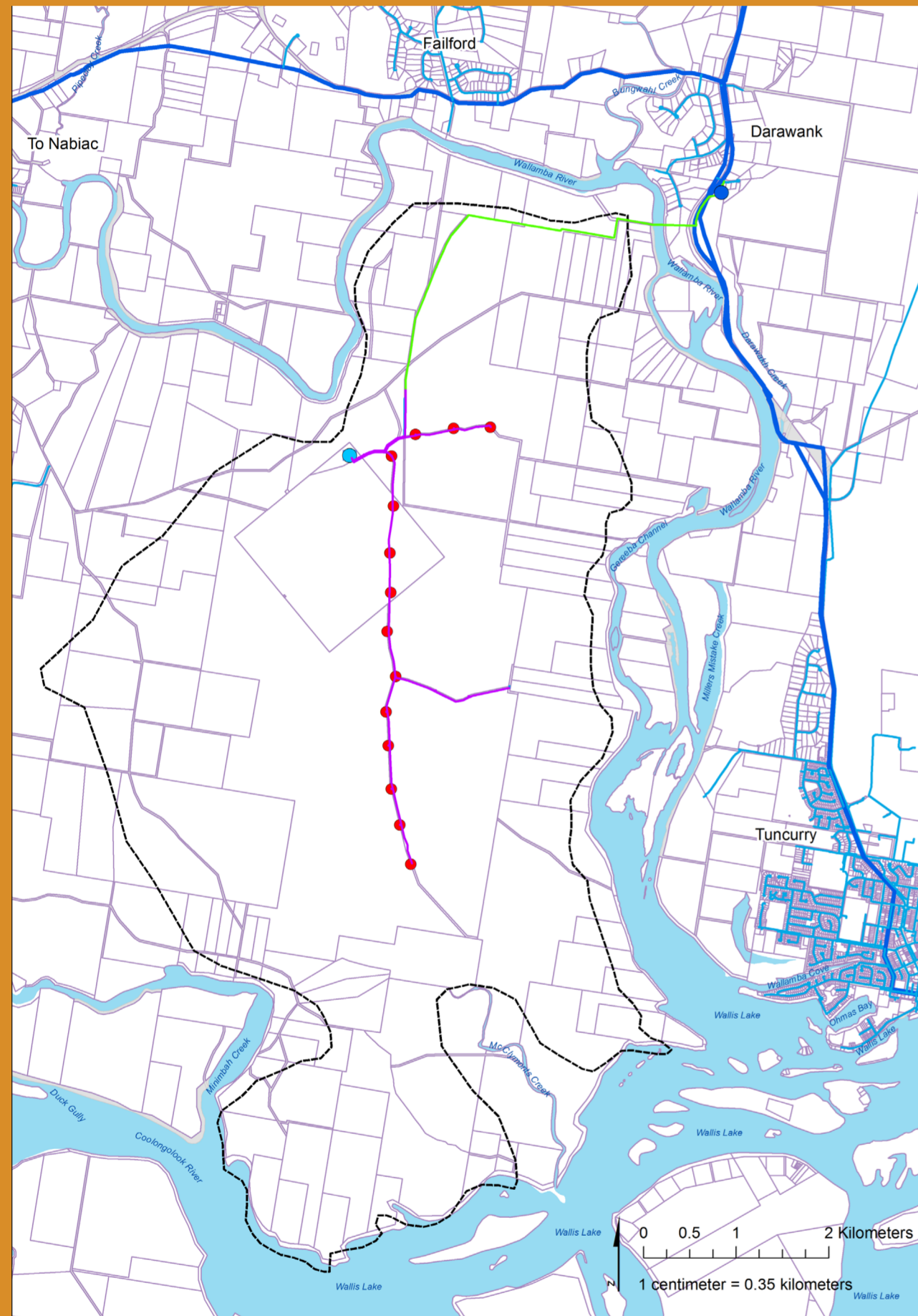


Nabiac Scheme location



Legend

- Nabiac Water Treatment Plant
- Darawank balance tank and pump station
- Stage 1 production bores
- Borefield transfer main
- Treated water transfer main
- Water main
- Nabiac Aquifer



PROTECTING THE AQUIFER

The aquifer is positioned 6km south east of Nabiac, 4km northwest of Tuncurry and has a total catchment surface area of approximately 44km². The borefield consists of 14 production bores and a series of raw water mains. The 14 production bores have a design maximum yield of 164 litres per second.

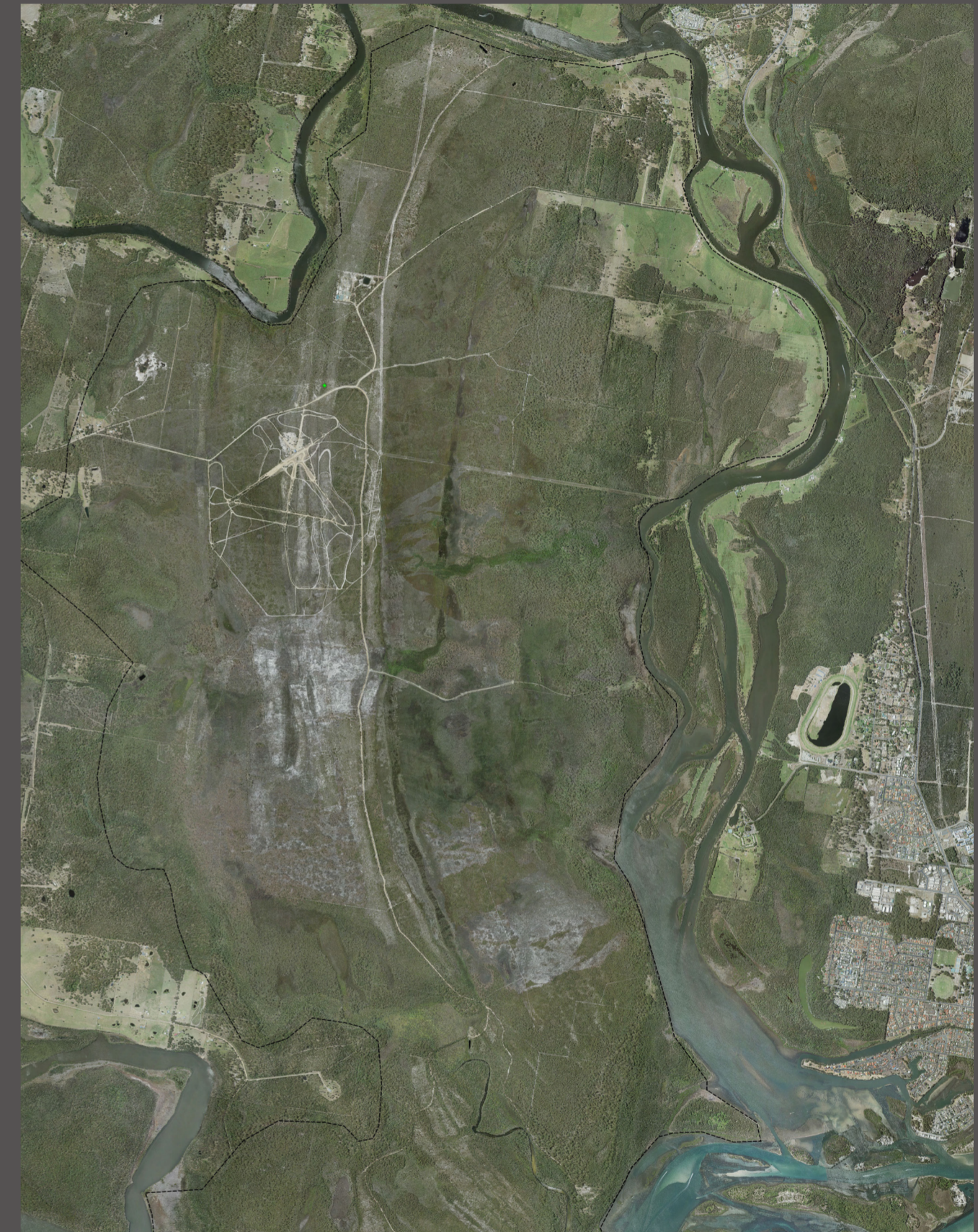
The aquifer is recharged by a combination of direct rainfall infiltration and storm water runoff from Bundacree Creek, located to the west of the catchment.

After extensive groundwater modelling, the aquifer extraction limits were determined based on six monthly rainfall data - six million litres per day in dry weather, eight million litres per day in average weather, and 10 million litres per day in wet weather.

An Environmental Management Plan was developed in consultation with the Department of Industry - Water, which includes rigorous sampling and testing requirements:

- 22 level monitoring bores, including 11 with cease to pump restrictions with licences, and
- 10 salinity and level monitoring bores.

The system has a complex system of monitoring and controls to protect the aquifer, all groundwater dependent ecosystems and the surrounding sensitive environments.



**Environmental protection
is ensured through a
complex monitoring
and control system**

