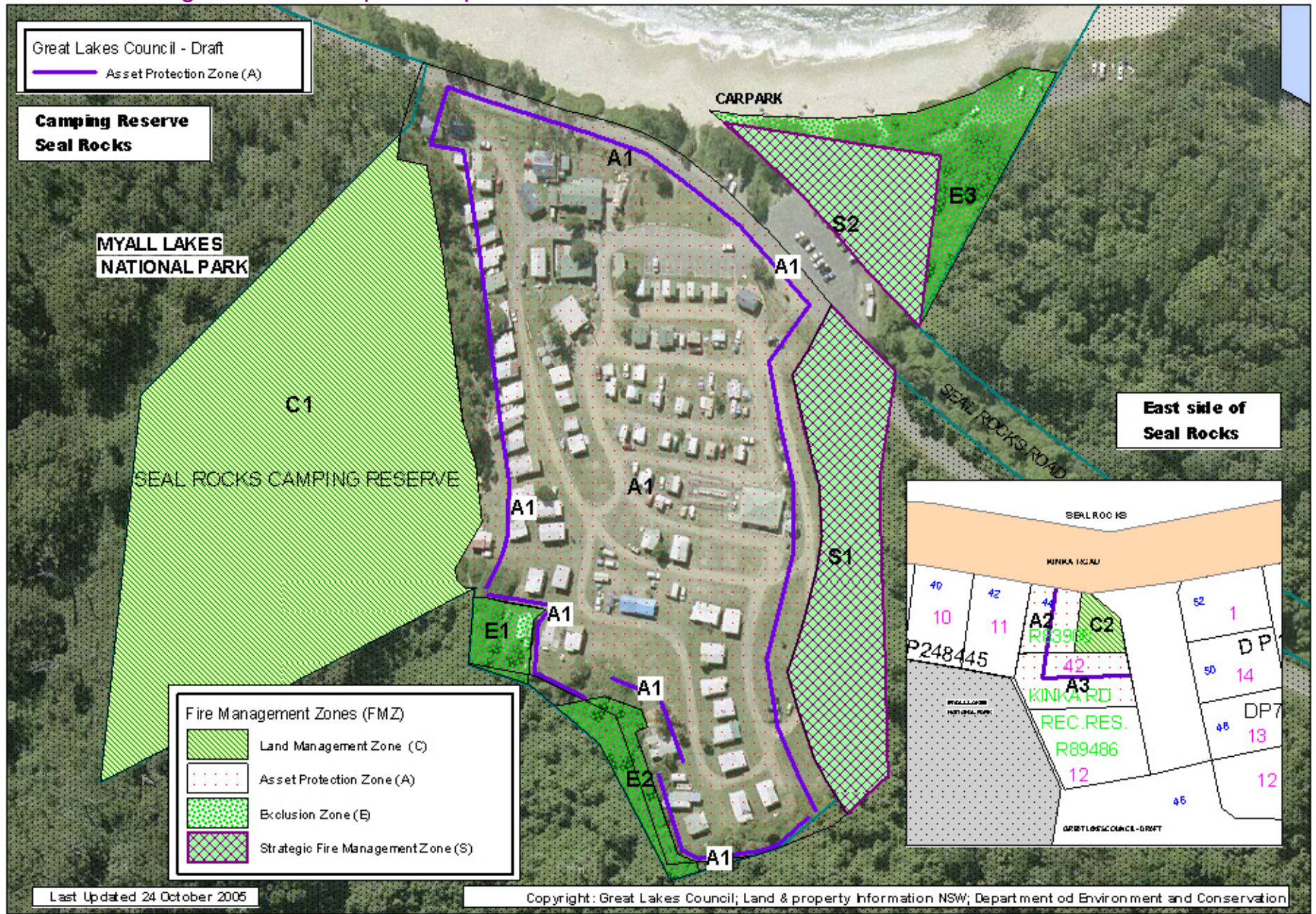


# Draft Fire Mitigation Plan Seal Rocks

Last modified 17/11/2005 -

Working towards a cooperative plan



FIRE MANAGEMENT ZONES AND MANAGEMENT BY GREAT LAKES COUNCIL					
Zone	Type of Zone <sup>1</sup>	Action & Objective	Minimum Fire Interval (years)	Maximum Fuel Load <sup>2</sup> tonnes per hectare	Responsible Authority
A1	APZ <sup>3</sup>	Creation & maintenance of APZ by slashing, in line with <i>Guidelines for Asset Protection Zones</i> <sup>4</sup> (The Code <sup>5</sup> /PBFP <sup>6</sup> ) within Seal Rocks Camping Reserve from 5-25m width.	N/A	NA – maintain discontinuous fuel to a maximum 8 tons/ha	Great :Lakes Council (GLC)
A2	APZ	Creation & maintenance of APZ by slashing, in line with <i>Guidelines for Asset Protection Zones</i> (The Code/PBFP) a 17m width.	N/A	NA – maintain discontinuous fuel to a maximum 8 tons/ha	GLC
A3	APZ	Maintenance of APZ by slashing, in line with <i>Guidelines for Asset Protection Zones</i> (The Code/PBFP) a 18m width.	N/A	NA – maintain discontinuous fuel to a maximum 8 tons/ha	GLC
S1	SFAZ <sup>7</sup>	Use mechanical methods or prescribed burning to reduce spotting potential & reduce fire intensity.	N/A	10	GLC
S2	SFAZ	Use mechanical methods/maintenance of the carpark surface and verge.	N/A	10	GLC
C1	LMZ <sup>8</sup>	Mosaic prescribed burning to manage for biodiversity for vegetation communities.	Meet biodiversity fire regimes.	N/A	GLC
C2	LMZ	Prescribed burning to manage for biodiversity for vegetation communities.	Meet biodiversity fire regimes.	N/A	GLC
E1,E2	EZ <sup>9</sup>	Fire exclusion to protect SEPP 26 and prevent the spread of weeds such as Bitou Bush/Lantana, and to promote the health of the dune vegetation.	N/A	N/A	GLC
E3	EZ	Fire exclusion to protect Coastal Dune system and prevent the spread of weeds such as Bitou Bush/Lantana, and to promote the health of the foredune vegetation.	N/A	N/A	GLC
Roads & Fire Trails/Access trails		Maintenance as per agency policies & guidelines.	N/A	N/A	GLC

Exhibited: \_\_\_\_\_

Adopted: \_\_\_\_\_

<sup>1</sup> For the objectives of the different types of zone see the Lower Hunter Bush Fire Risk Management Plan (Lower Hunter Bush Fire Management Committee, 2002).  
<sup>2</sup> Fuel loads must be measured in accordance with the Overall Fuel Hazard Guide (Natural Resources and Environment, 1999) or (Overall Fuel Hazard Guide, Sydney NSW NPWS 2002).  
<sup>3</sup> APZ – Asset Protection Zone.  
<sup>4</sup> *Guidelines for Asset Protection Zones* (NSW Rural Fire Service 2003).  
<sup>5</sup> *Bushfire Environmental Assessment Code for Asset Protection and Strategic Fire Management Zones* (NSW Rural Fire Service 2003), (The Code).  
<sup>6</sup> *Planning for Bushfire Protection* (NSW Rural Fire Service 2001), (PBFP).  
<sup>7</sup> SFAZ – Strategic Fire Management Zone.  
<sup>8</sup> LMZ – Land Management Zone.  
<sup>9</sup> EZ – Fire Exclusion Zone.