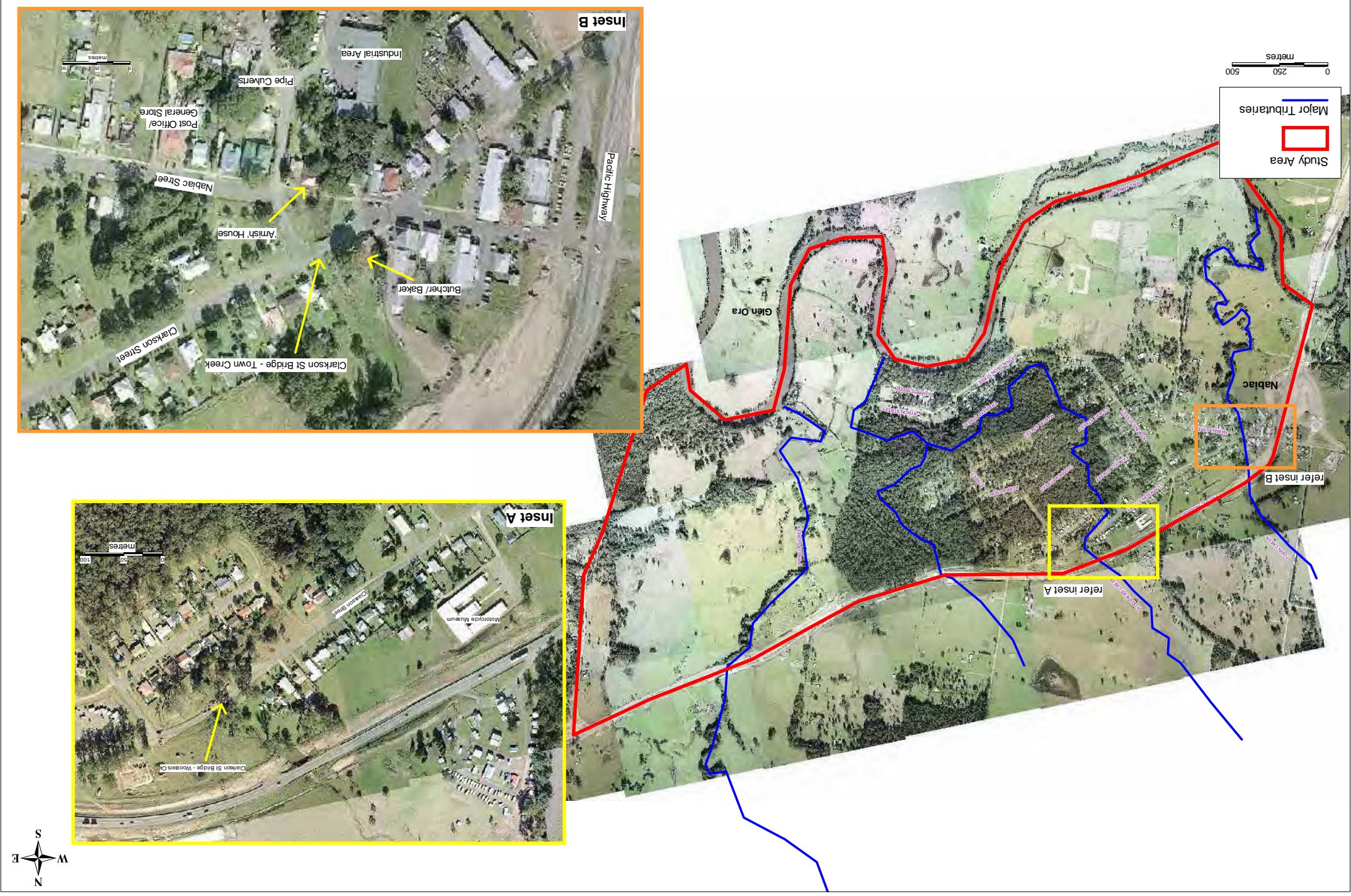


FIGURE 1.1
LOCALITY

FIGURE 2.1
STUDY AREA



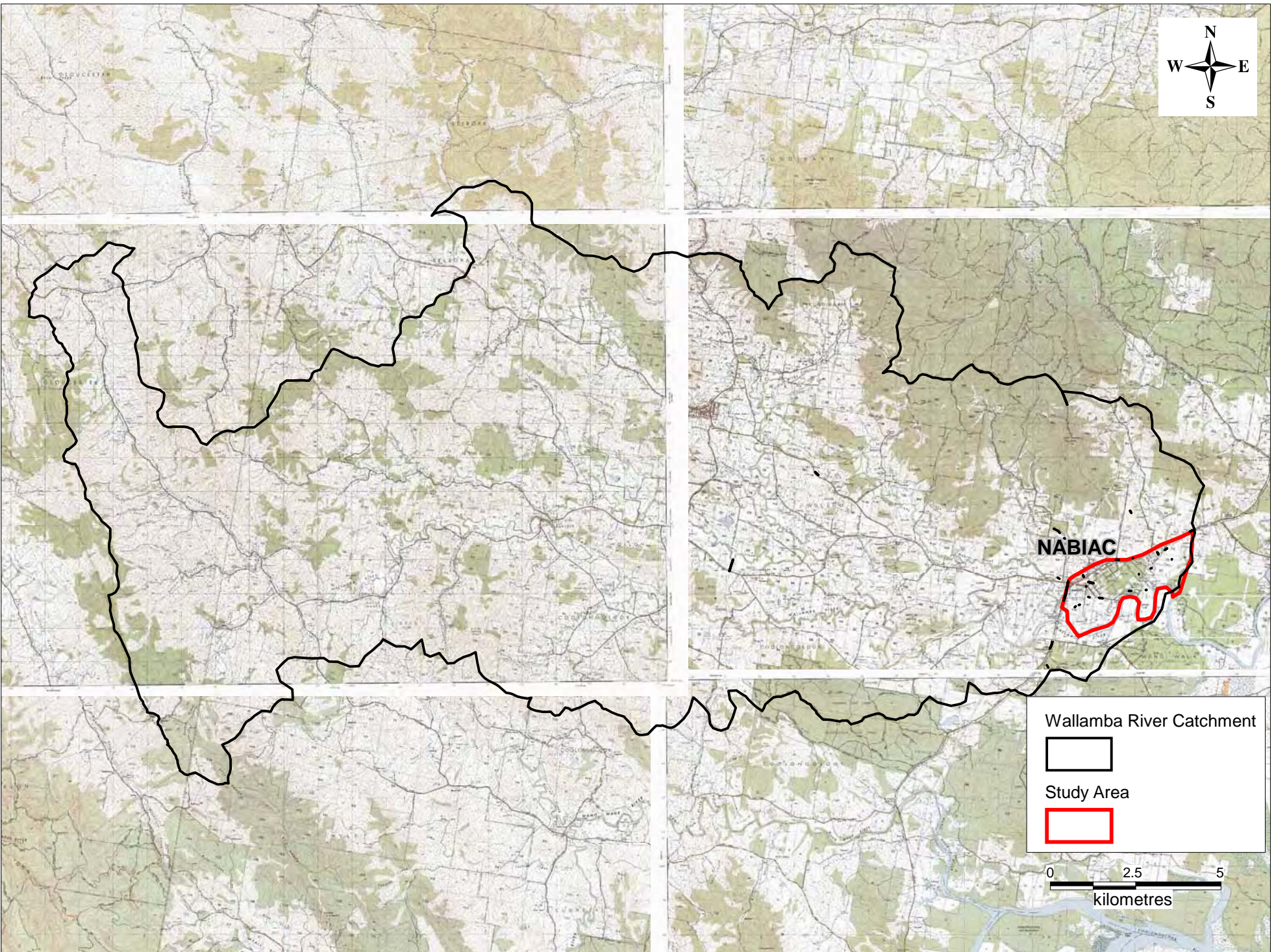
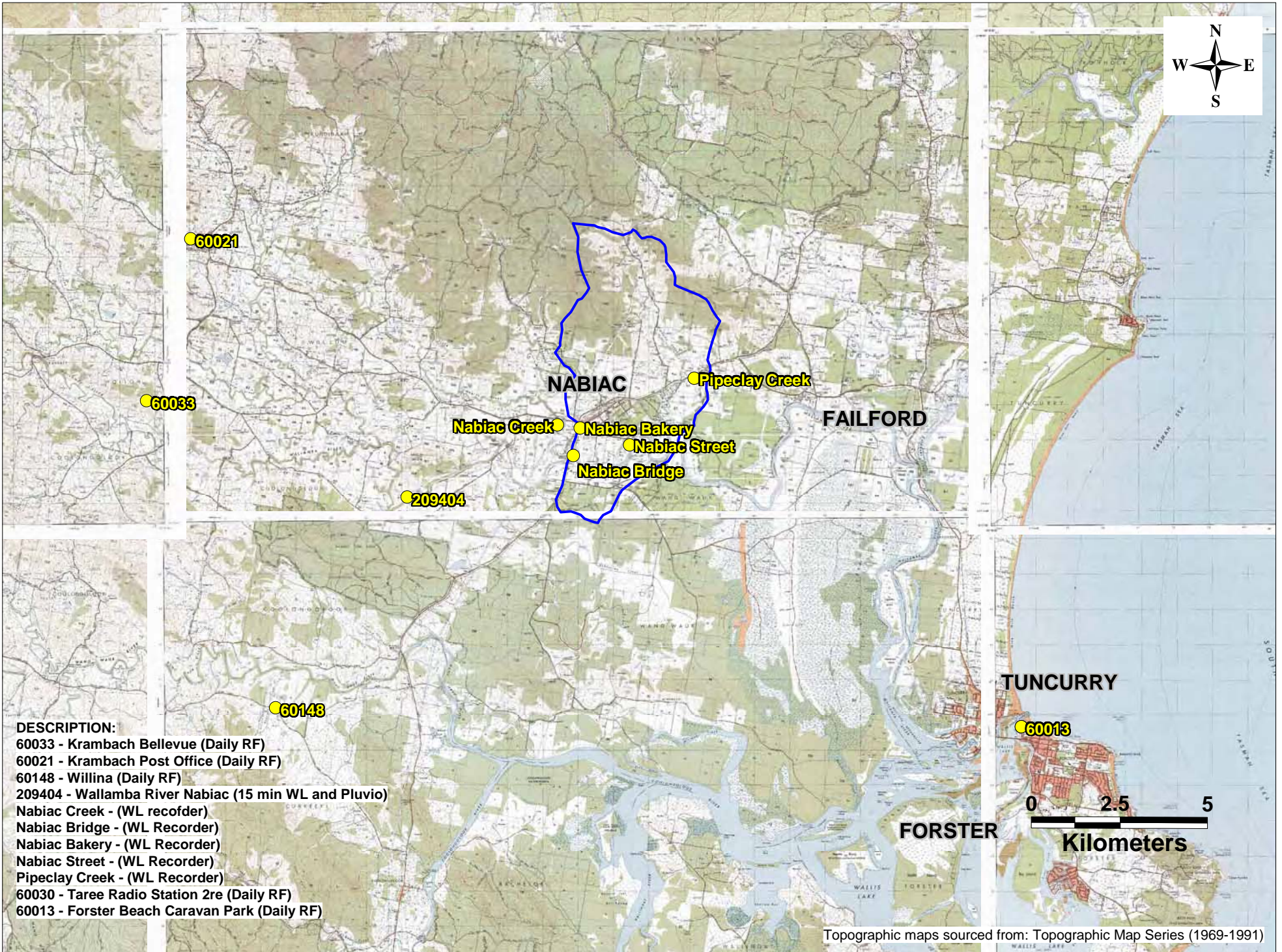
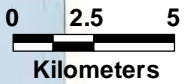


FIGURE 2.2
WALLAMBA RIVER CATCHMENT

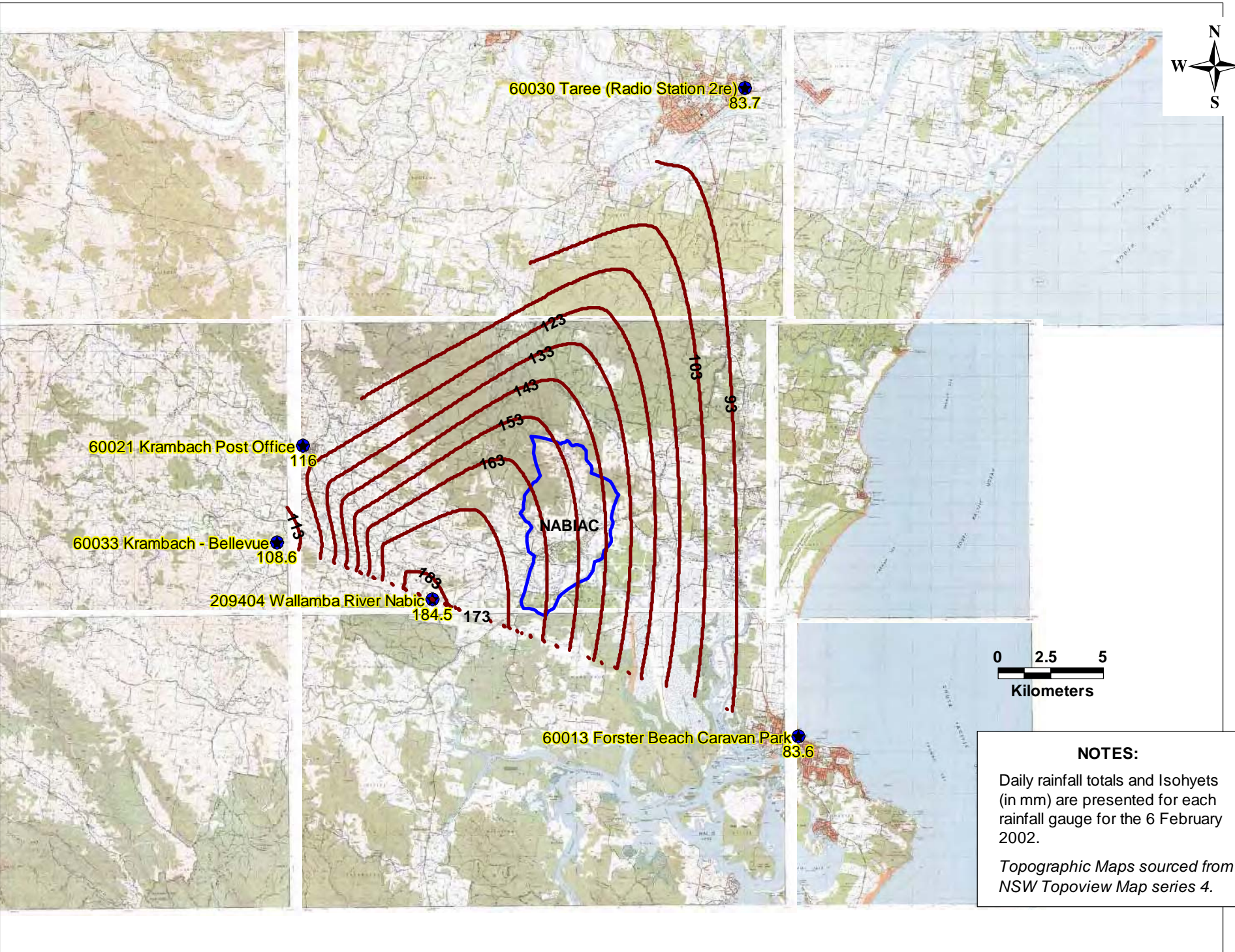
NABIAC FLOOD STUDY

FIGURE 3.1
Rain and WL Gauges for Nabiac



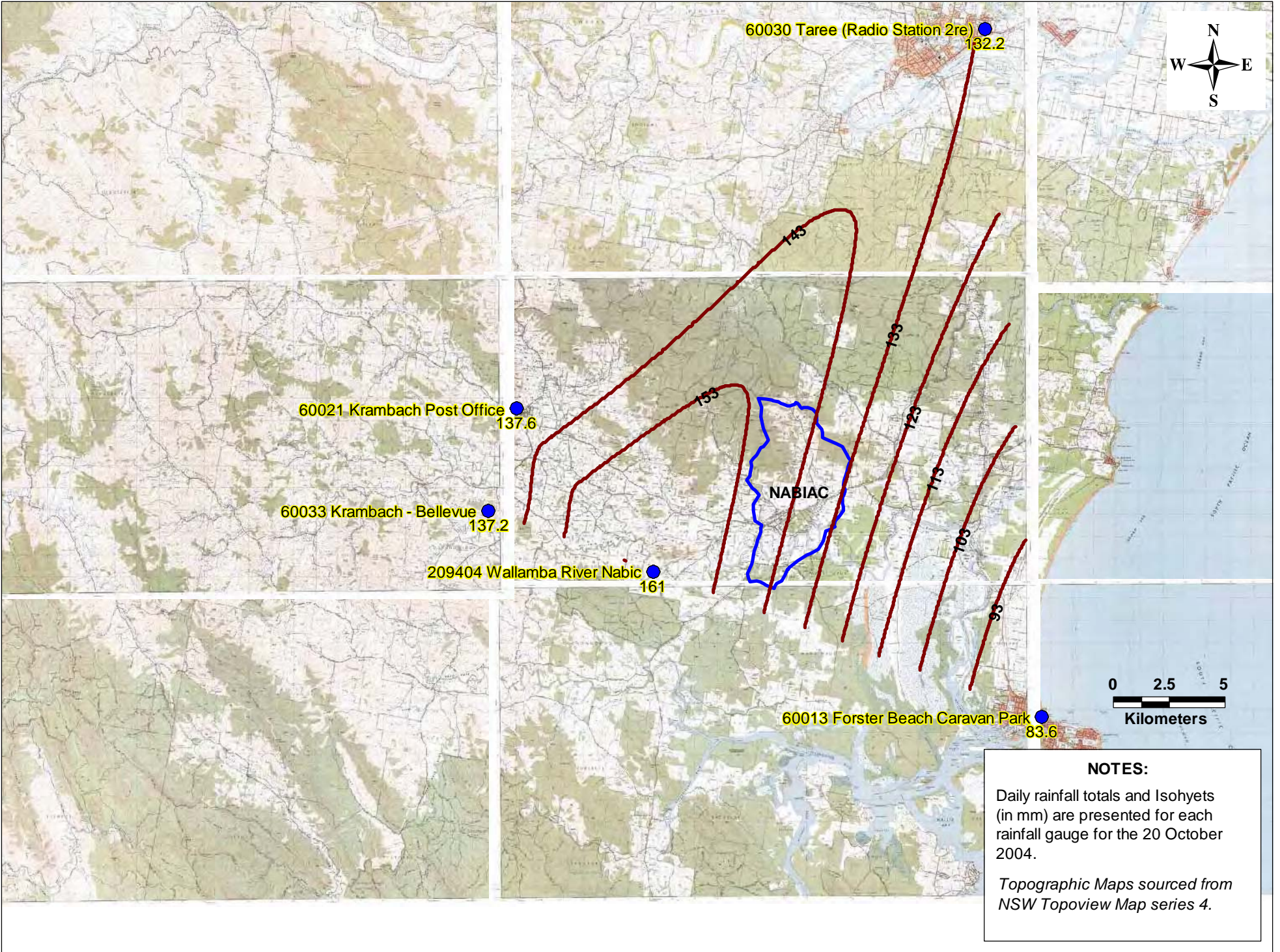


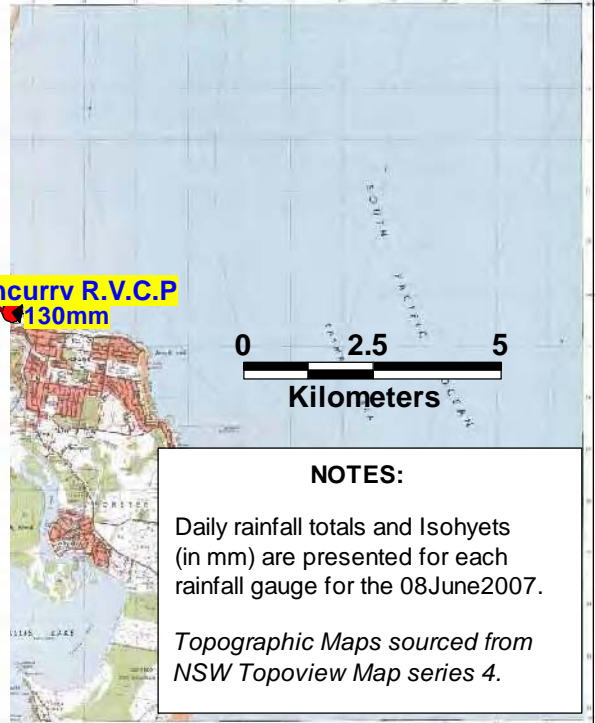
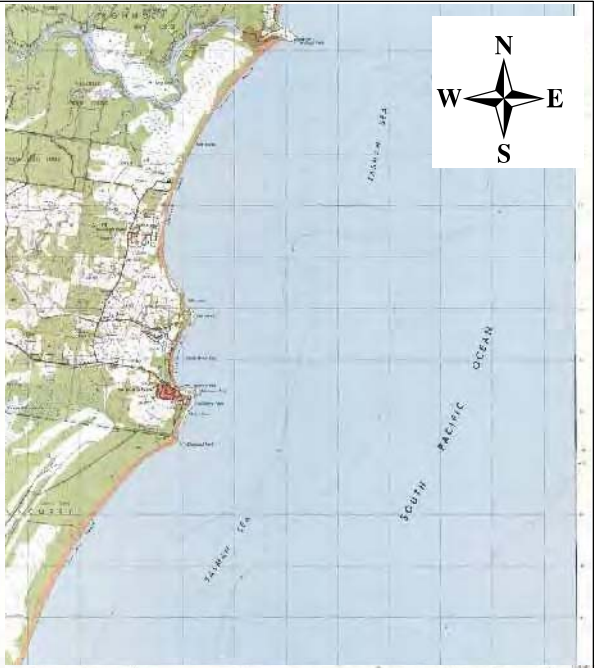
NOTES:
Daily rainfall totals and Isohyets (in mm) are presented for each rainfall gauge for the 6 February 2002.
Topographic Maps sourced from NSW Topoview Map series 4.



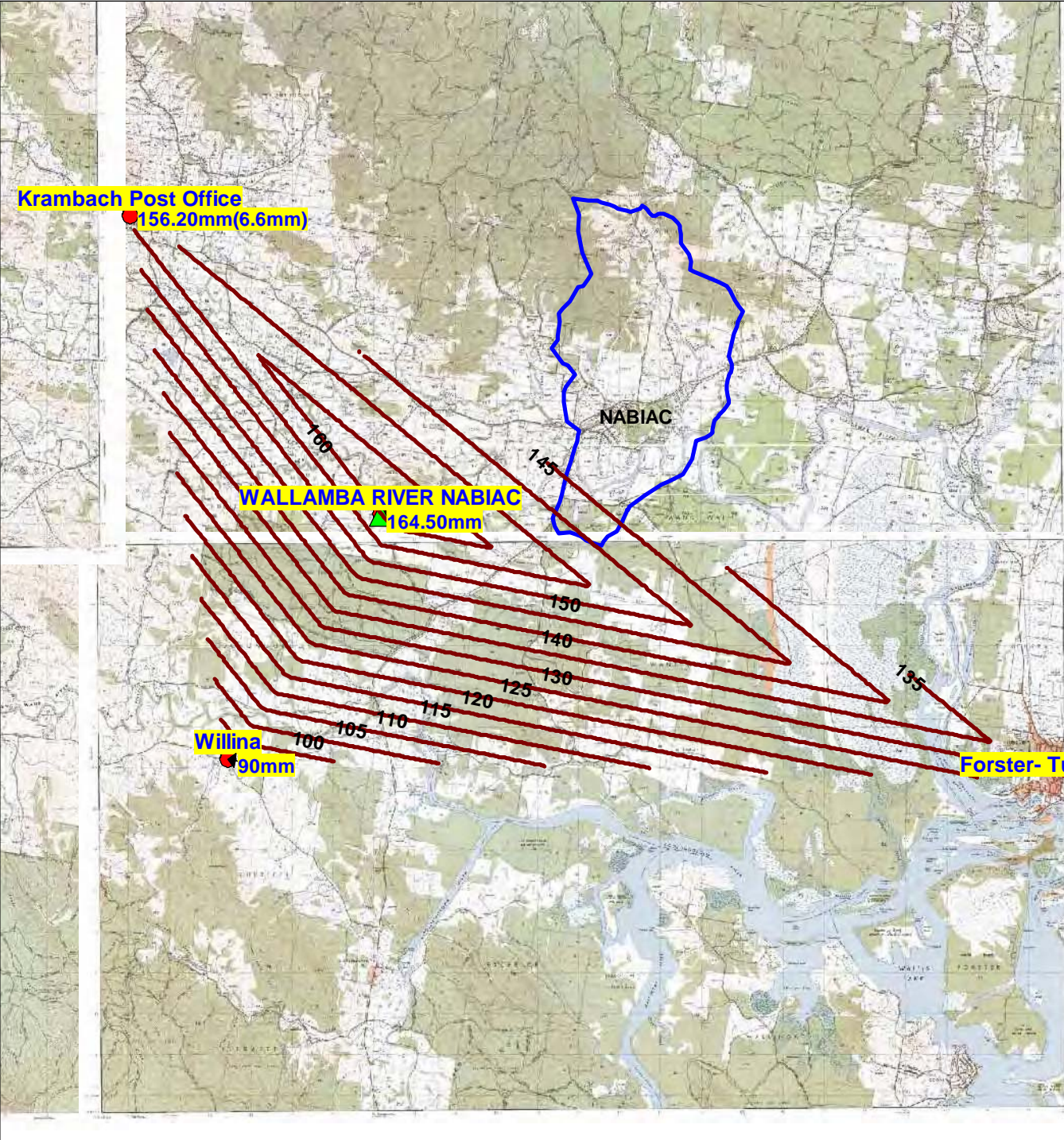
NABIAC FLOOD STUDY

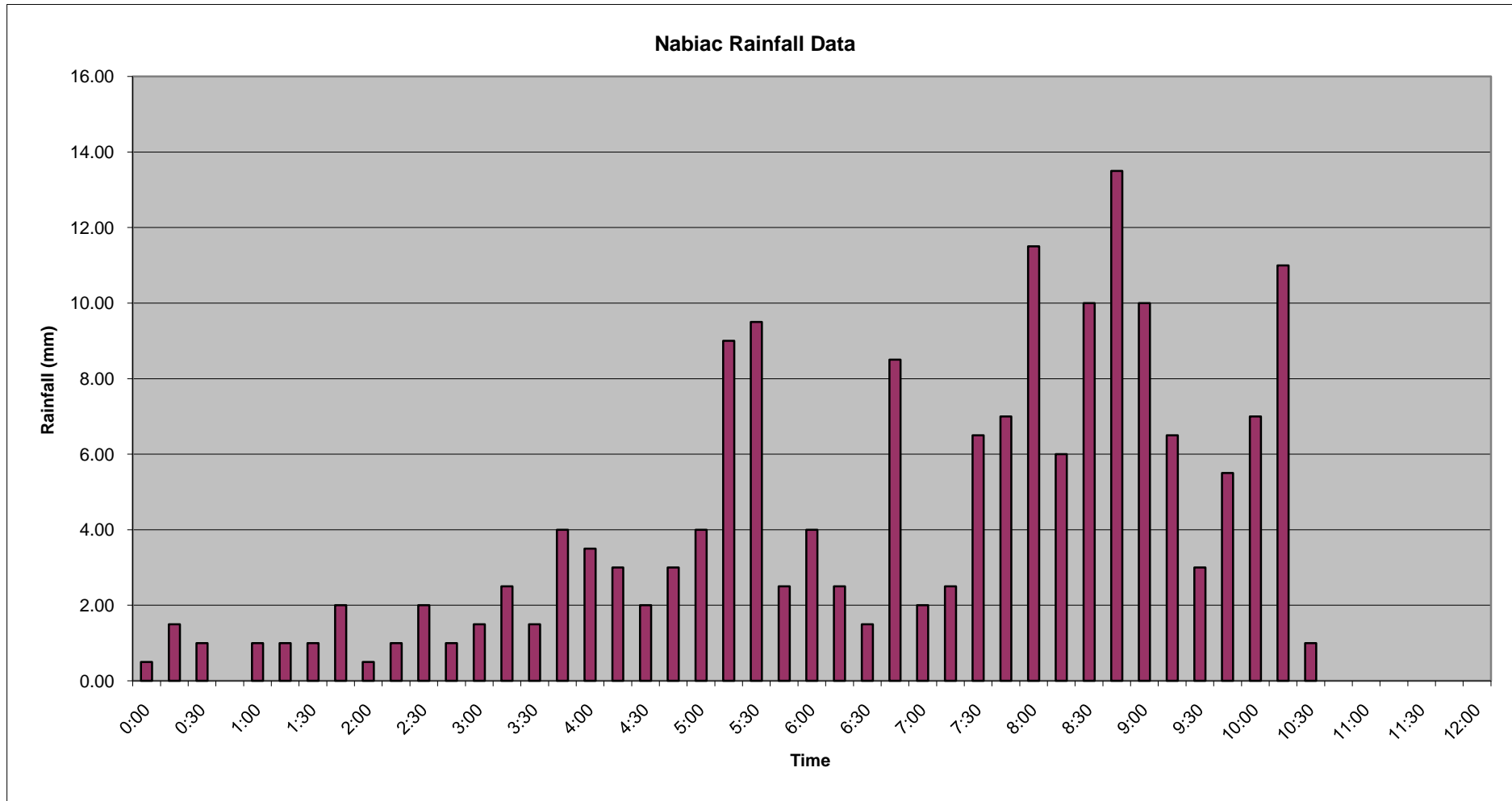
Figure 3.3
Isohyets Map for 20 October 2004





NOTES:
Daily rainfall totals and Isohyets (in mm) are presented for each rainfall gauge for the 08 June 2007.
Topographic Maps sourced from NSW Topoview Map series 4.





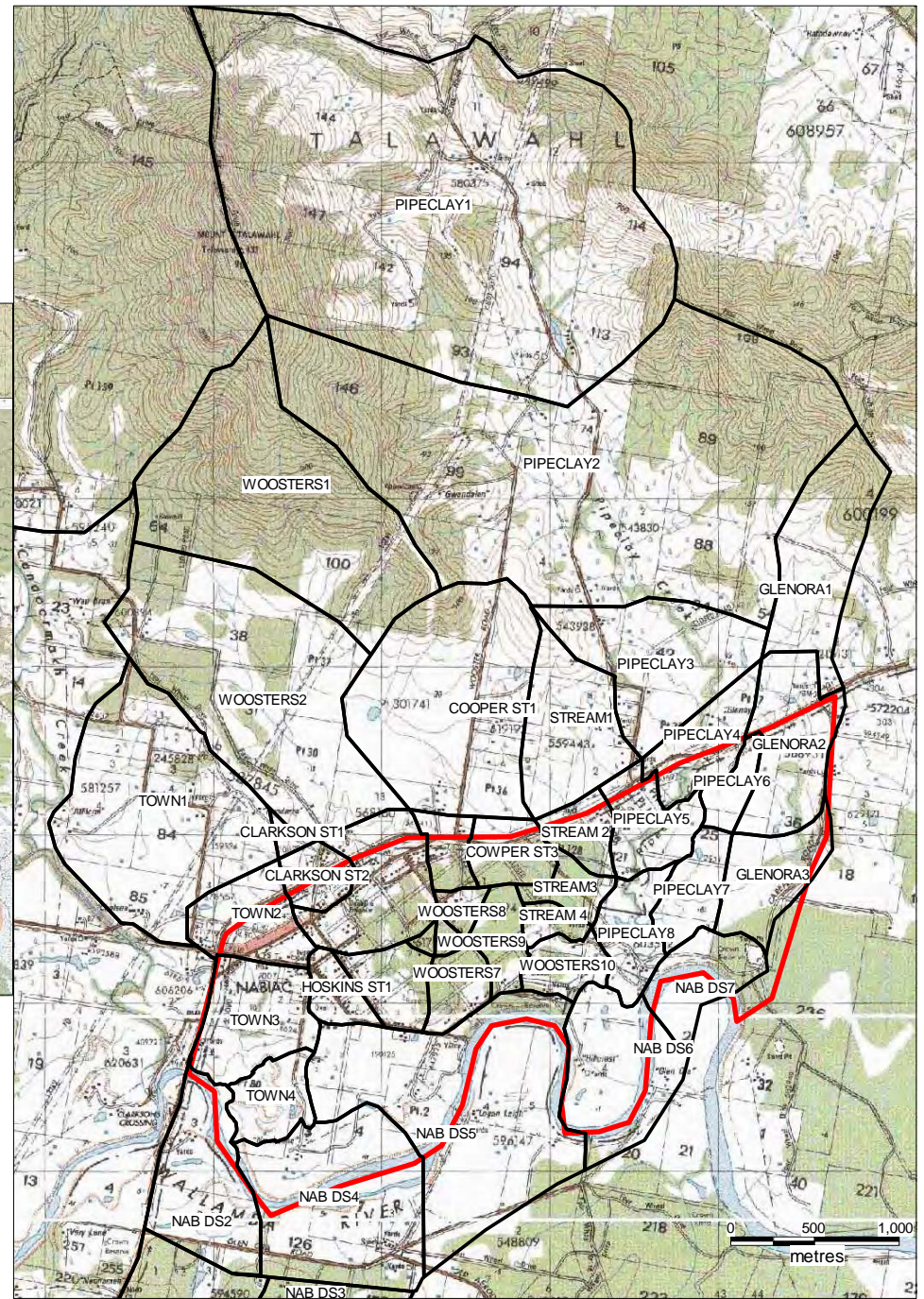
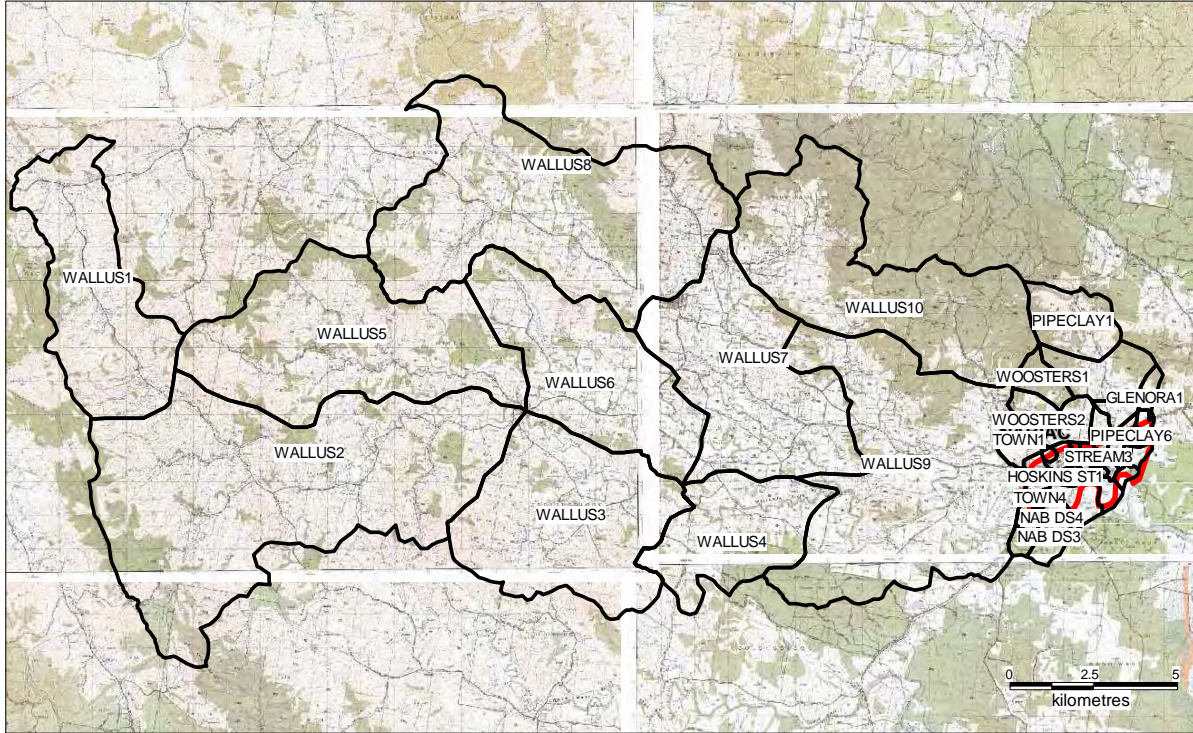
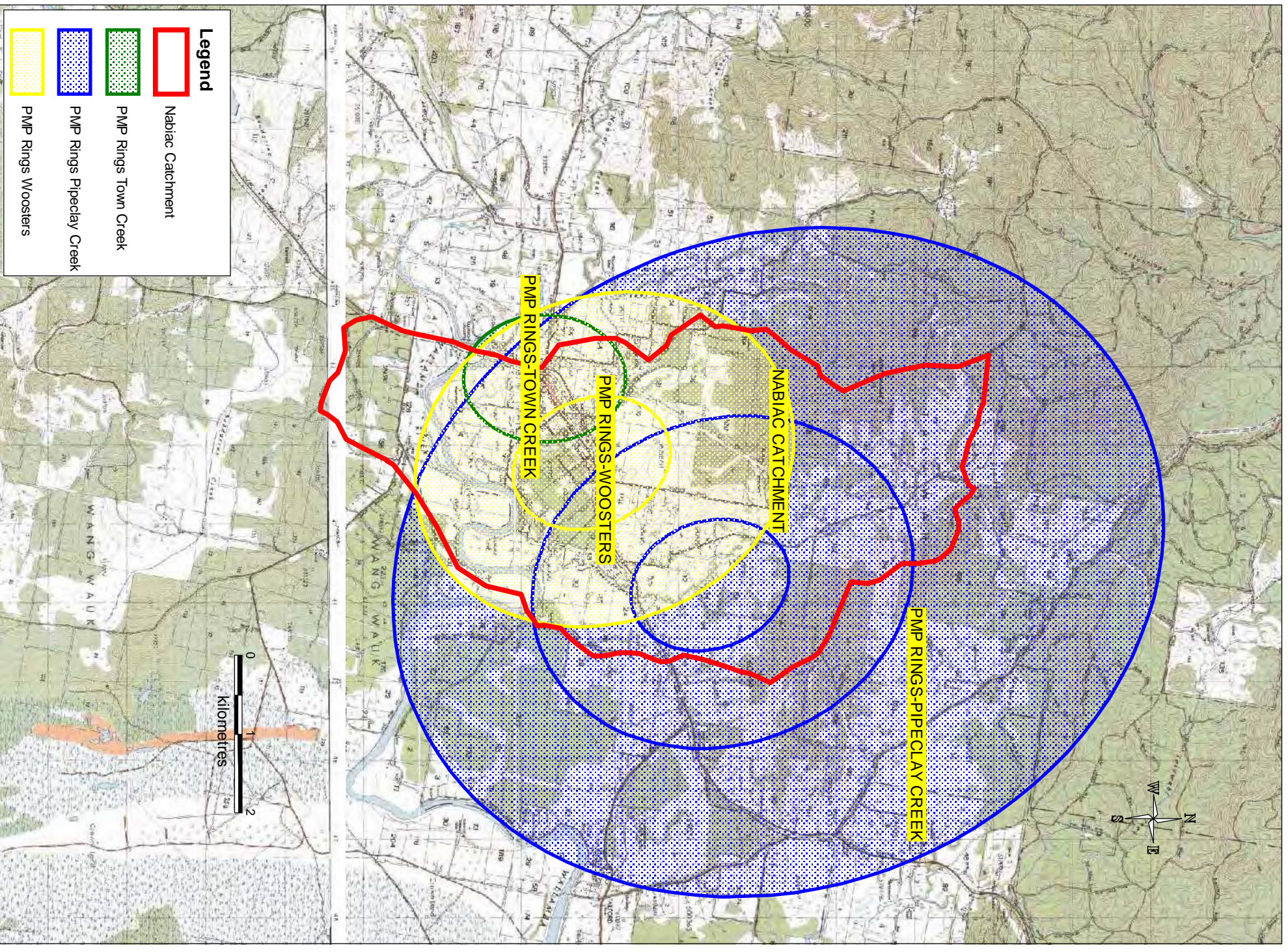
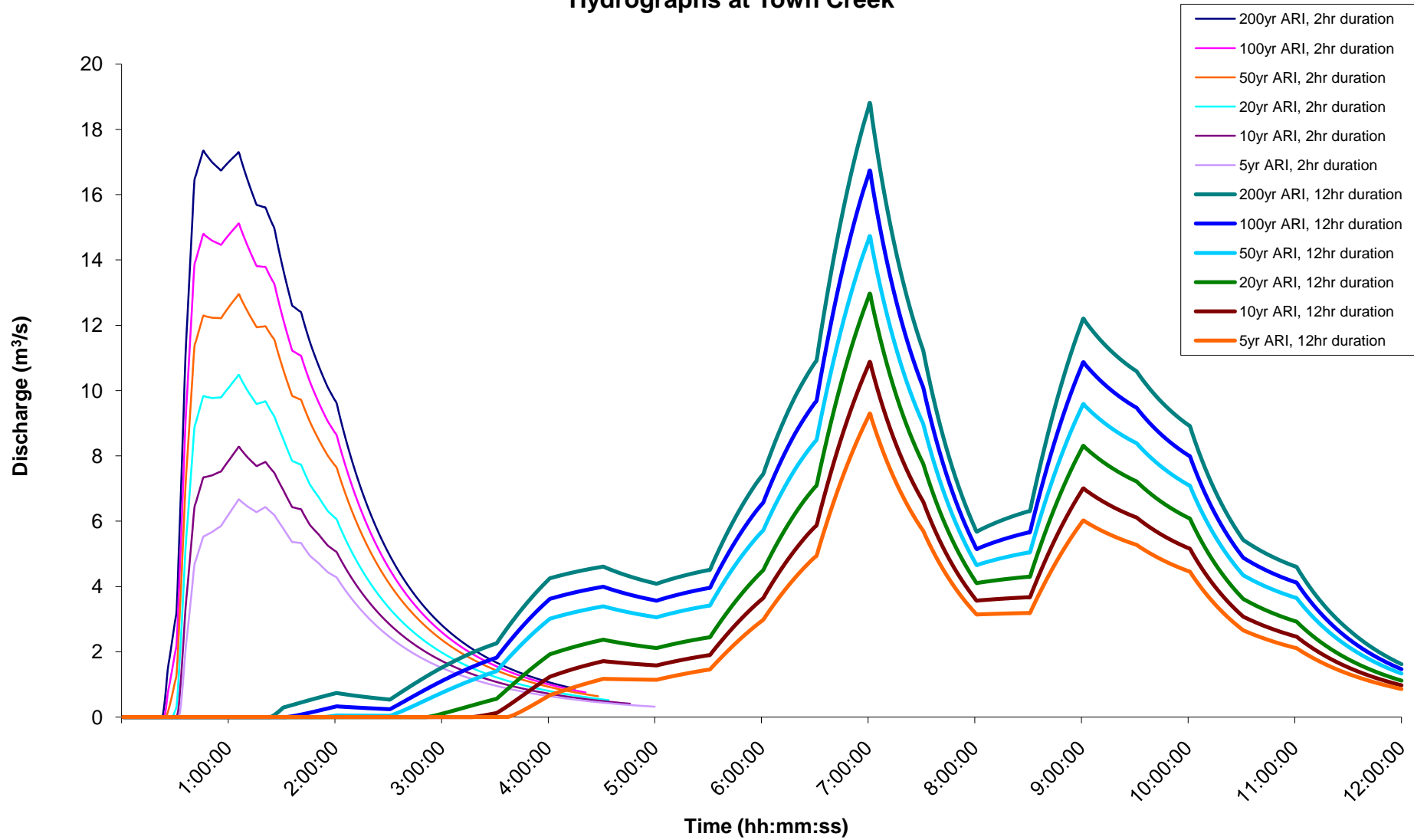


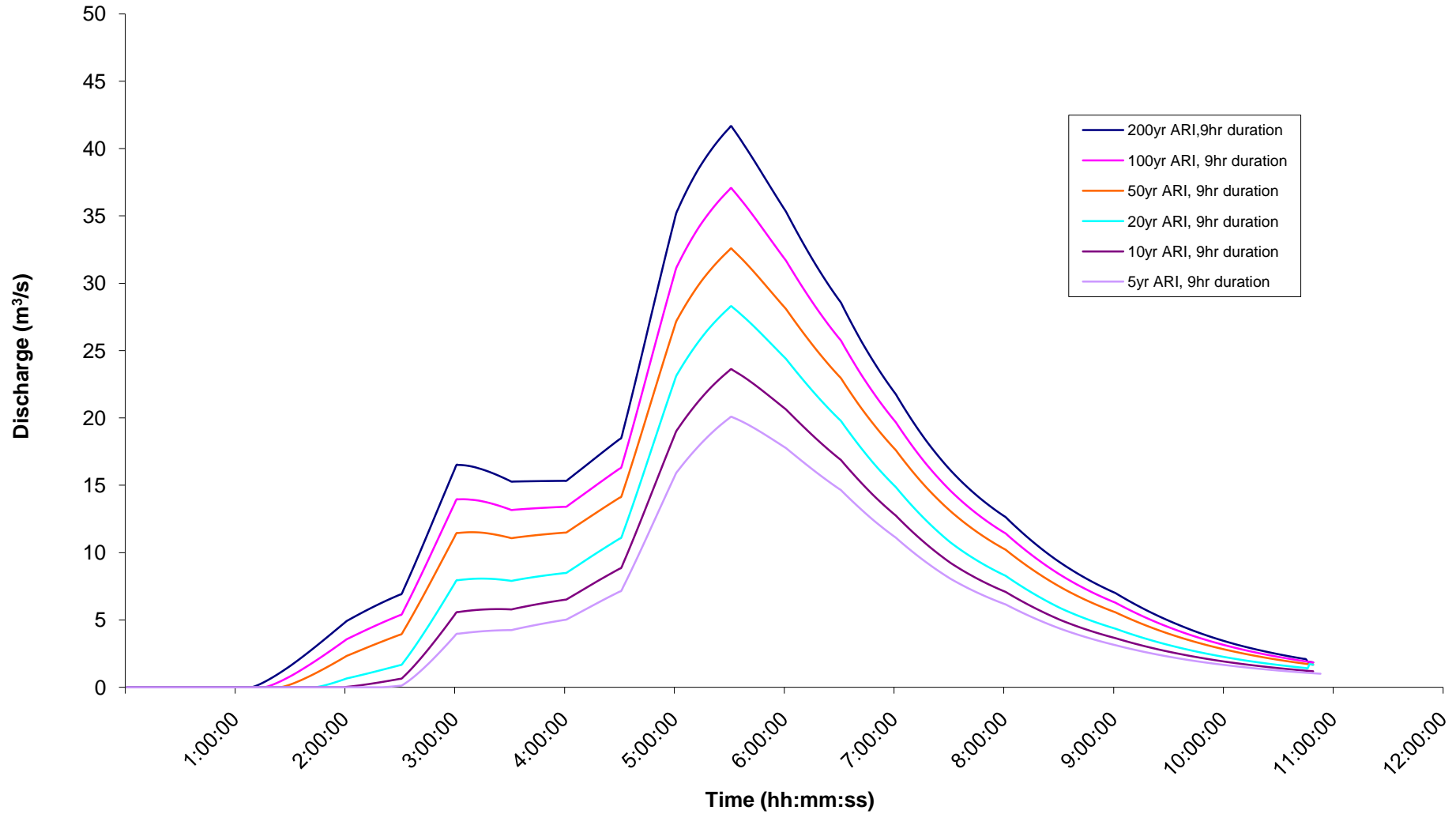
FIGURE 6.1
Nabiac Sub-Catchments



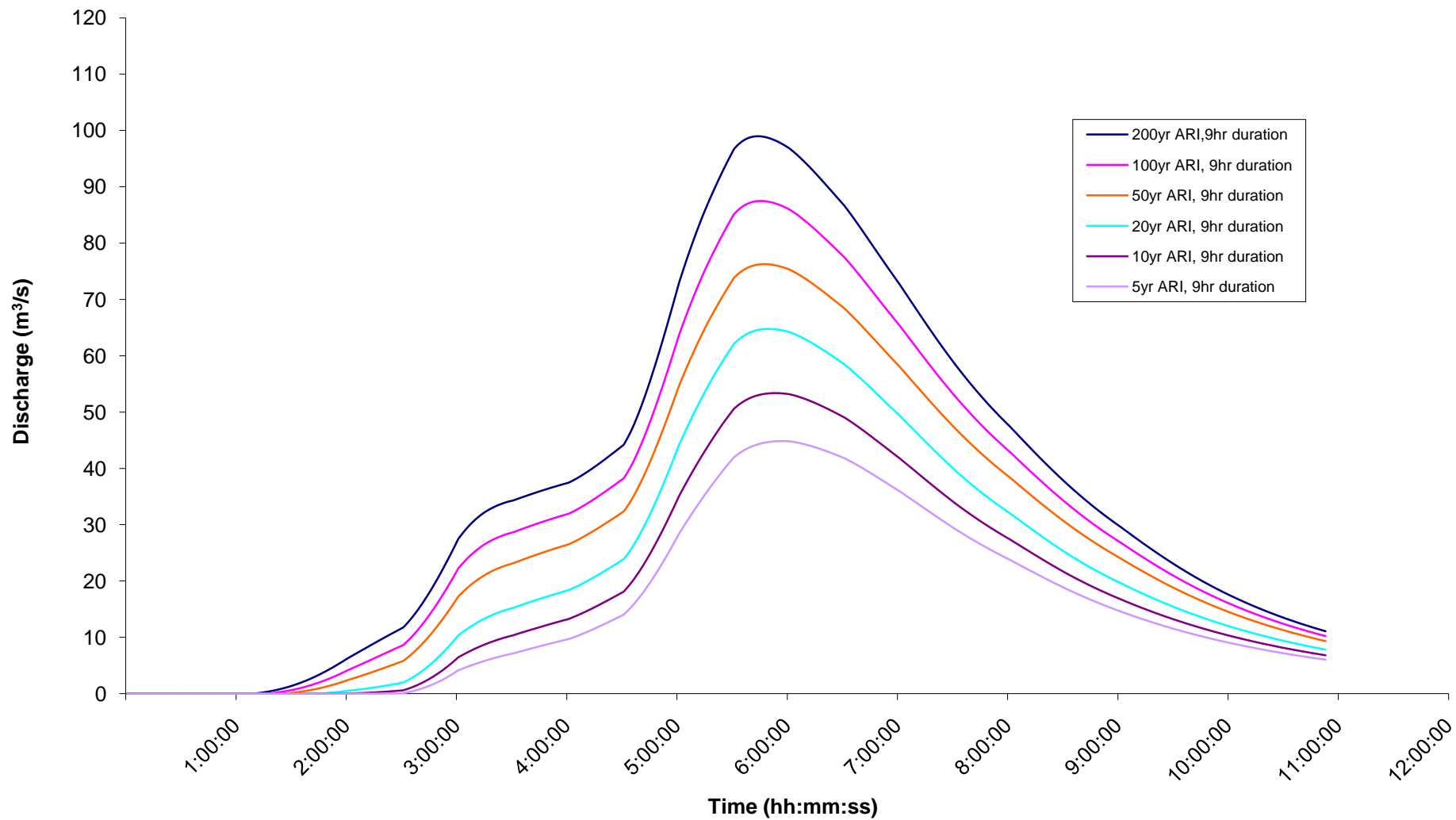
Hydrographs at Town Creek

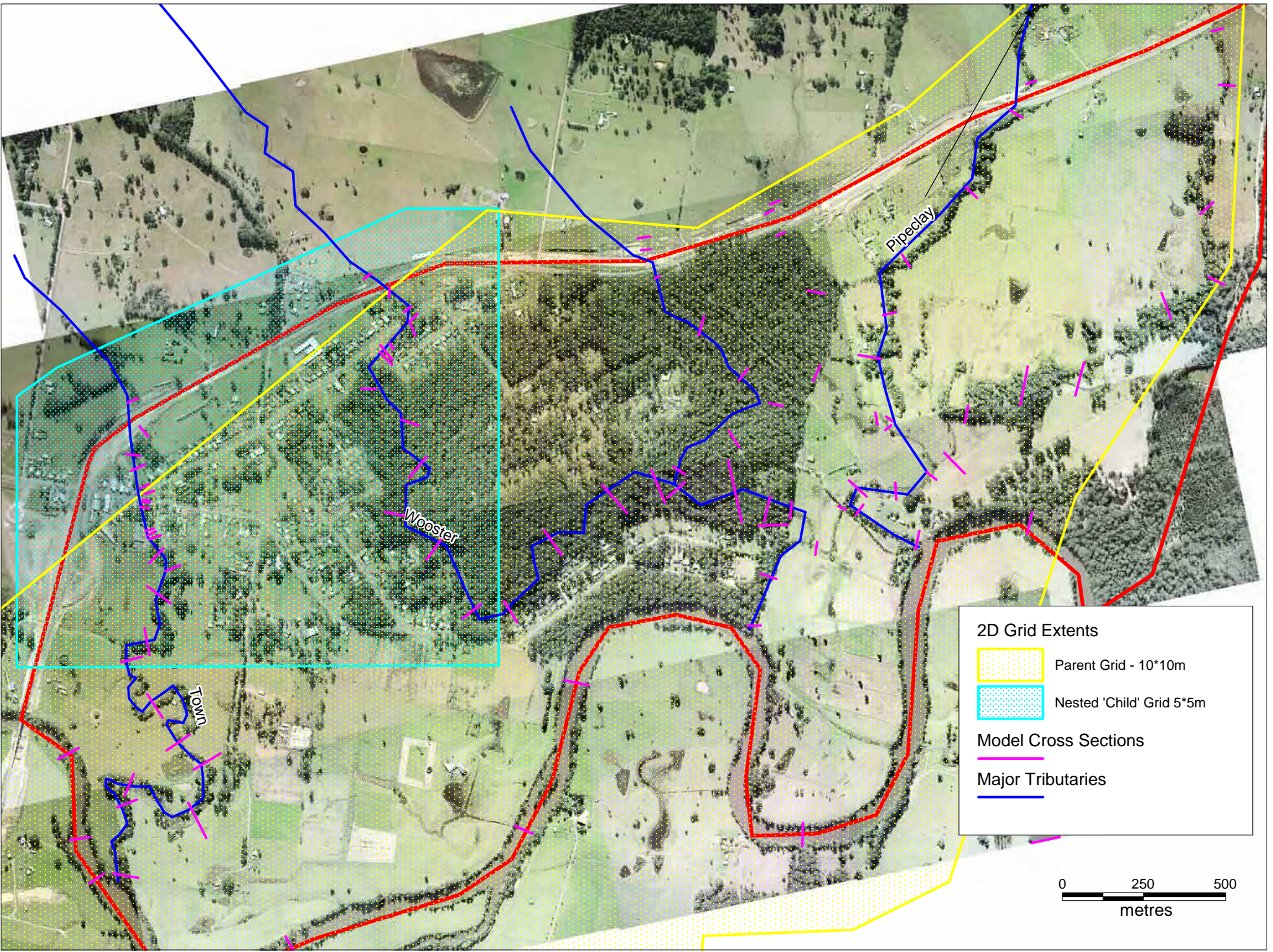


Hydrographs at Woosters Creek



Hydrographs at Pipeclay Creek





2D Grid Extents

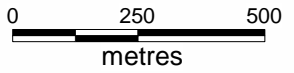
- Parent Grid - 10*10m
- Nested 'Child' Grid 5*5m

Model Cross Sections

-

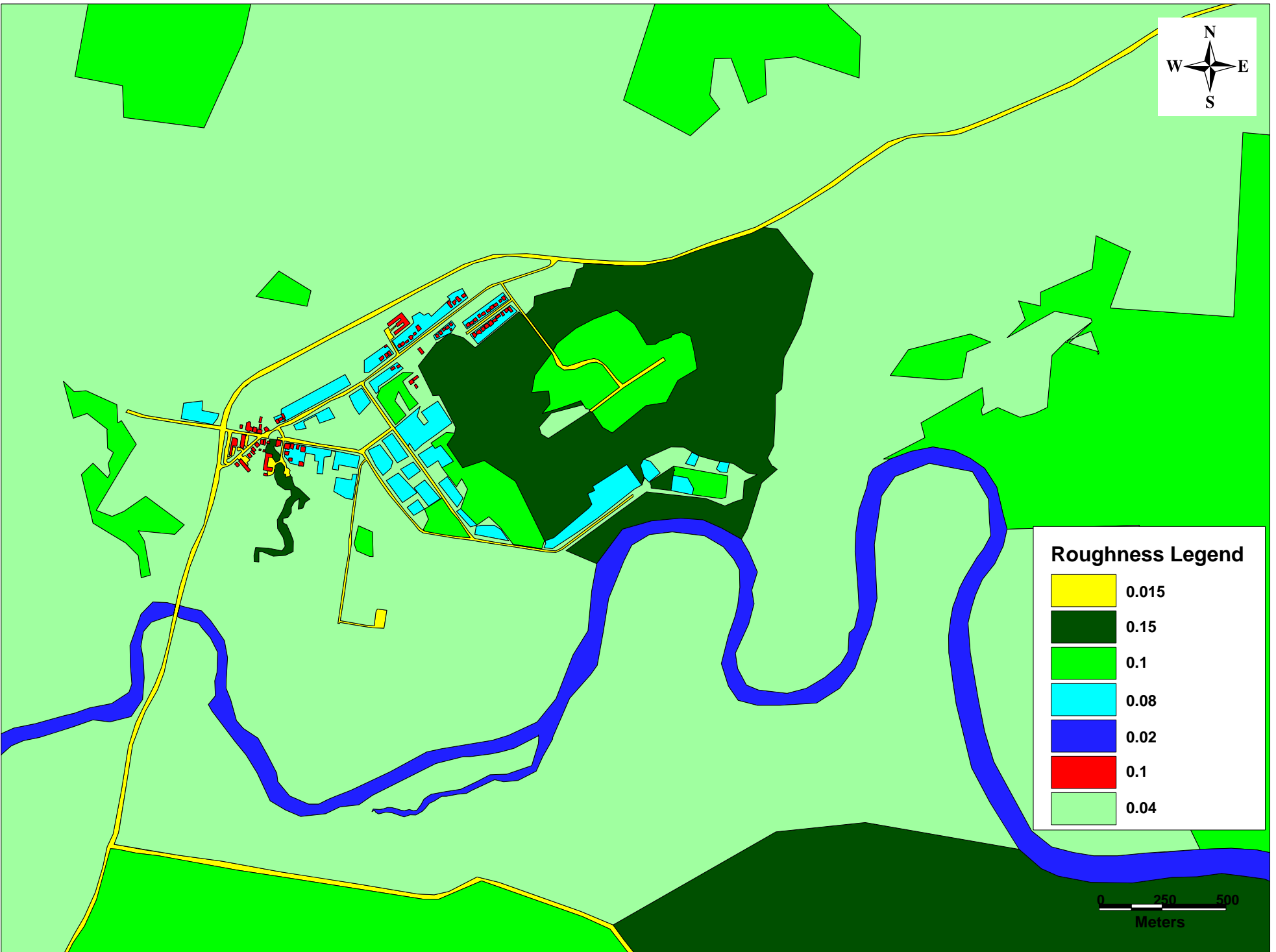
Major Tributaries

-



NABIAC FLOOD STUDY

**FIGURE 7.1
HYDRAULIC MODEL EXTENT**



0 250 500
Meters

NABIAC FLOOD STUDY

FIGURE 7.2
2D Roughness Grid

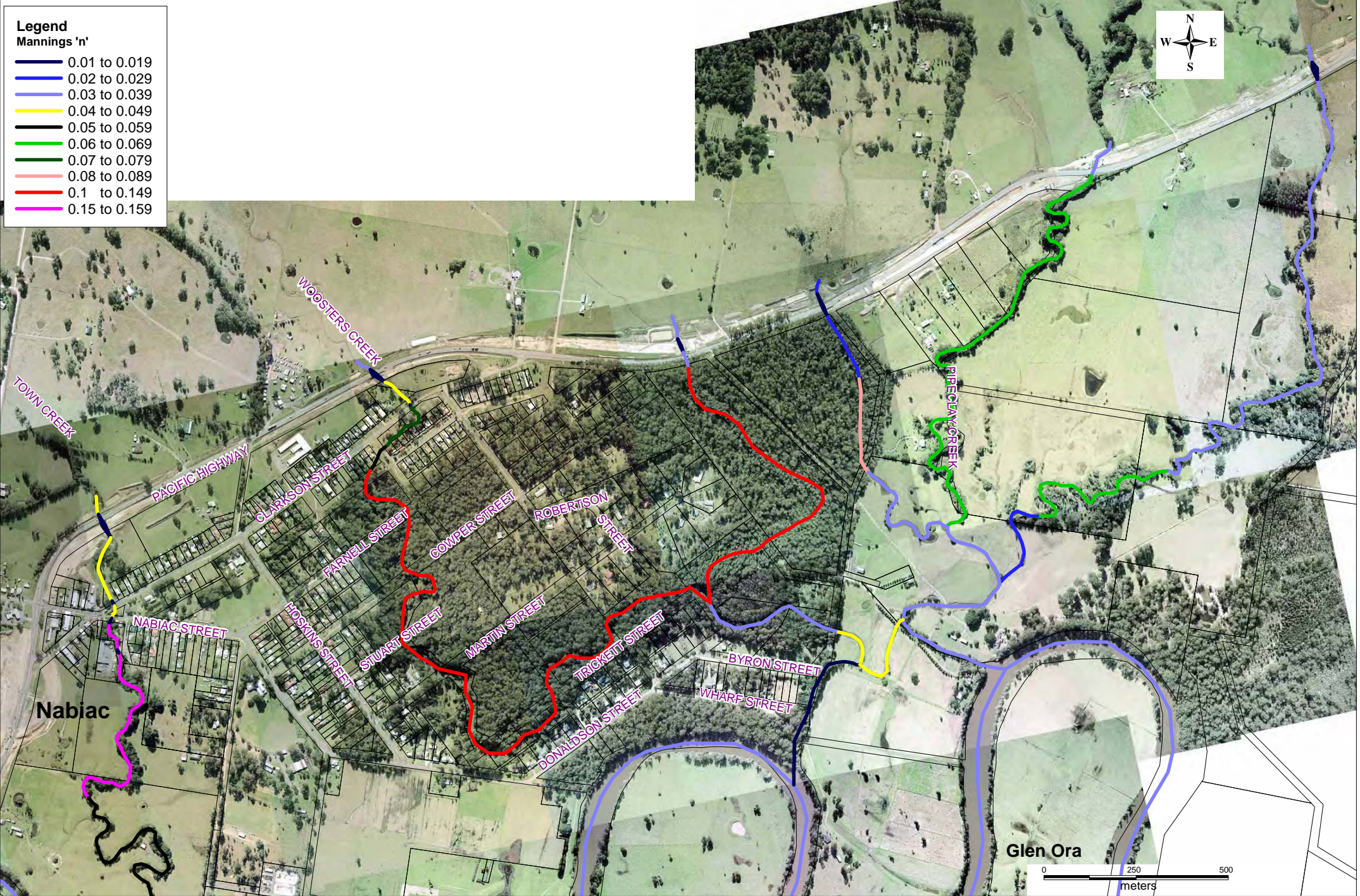


FIGURE 7.3

Figure 7.3 - 1D Roughness



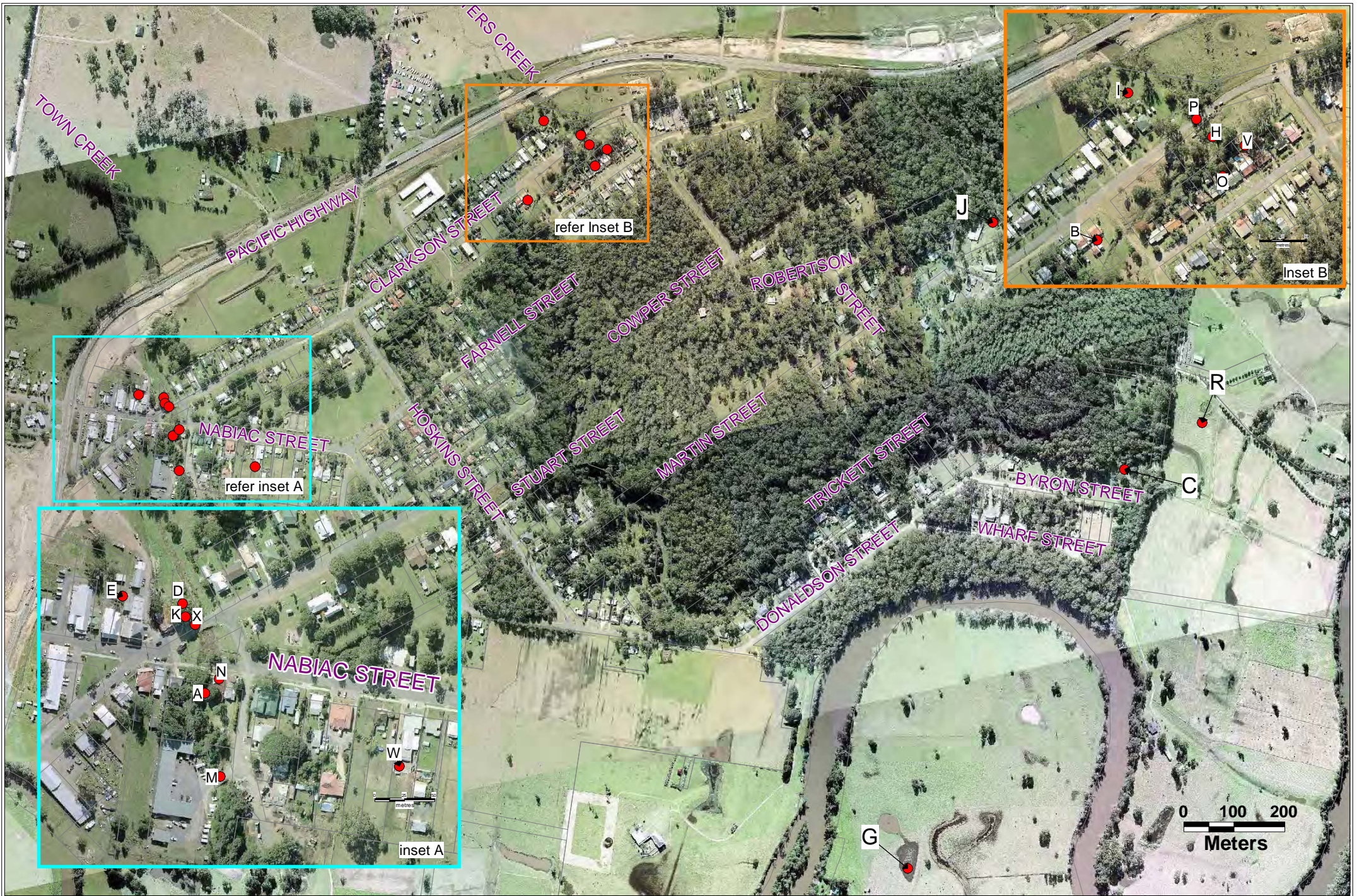
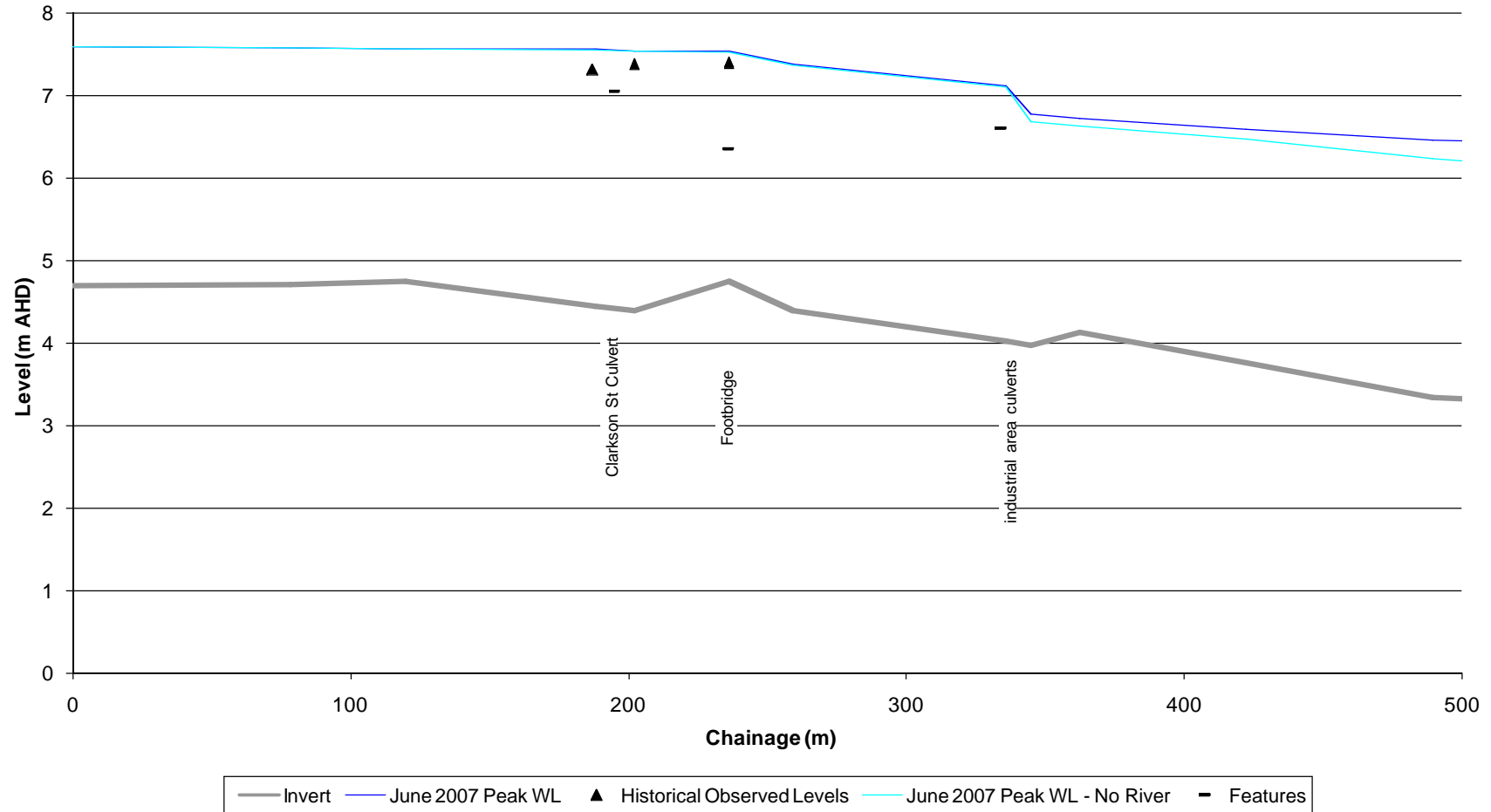


Figure 8.2
February 2002 Historic Flood Level

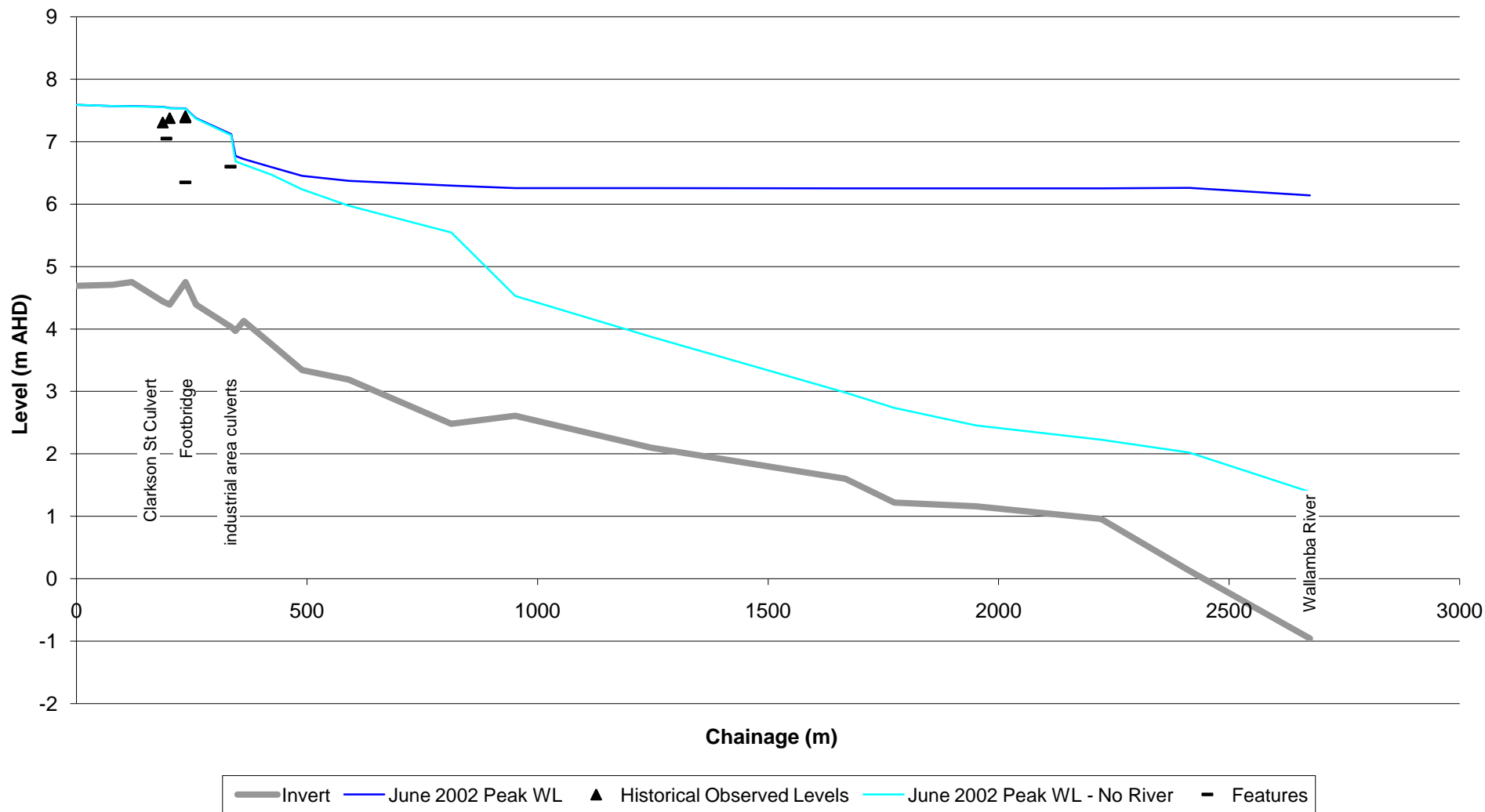


Figure 8.3
October 2004 Historic Flood Level

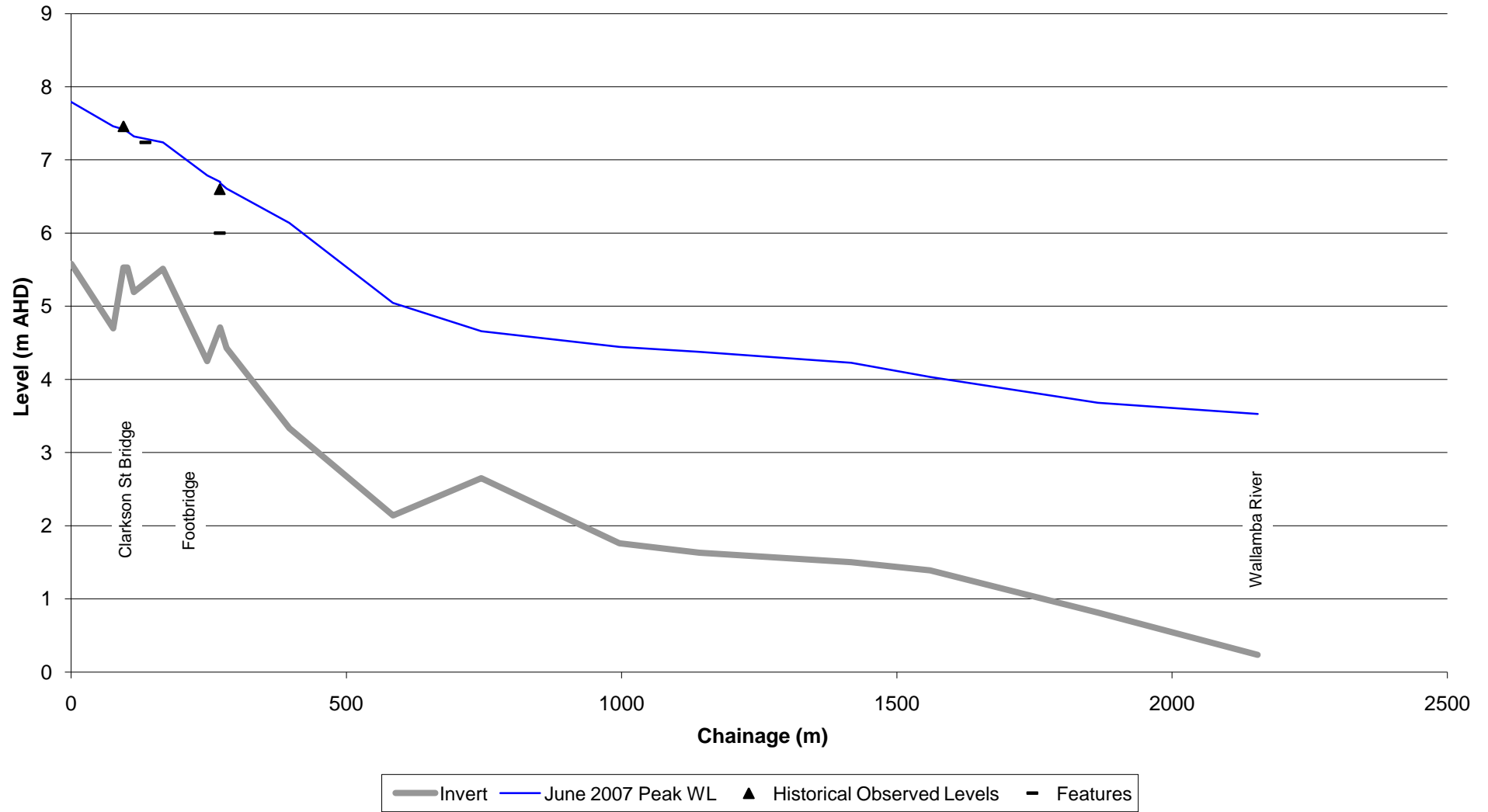
June 2007 Town Creek Profile



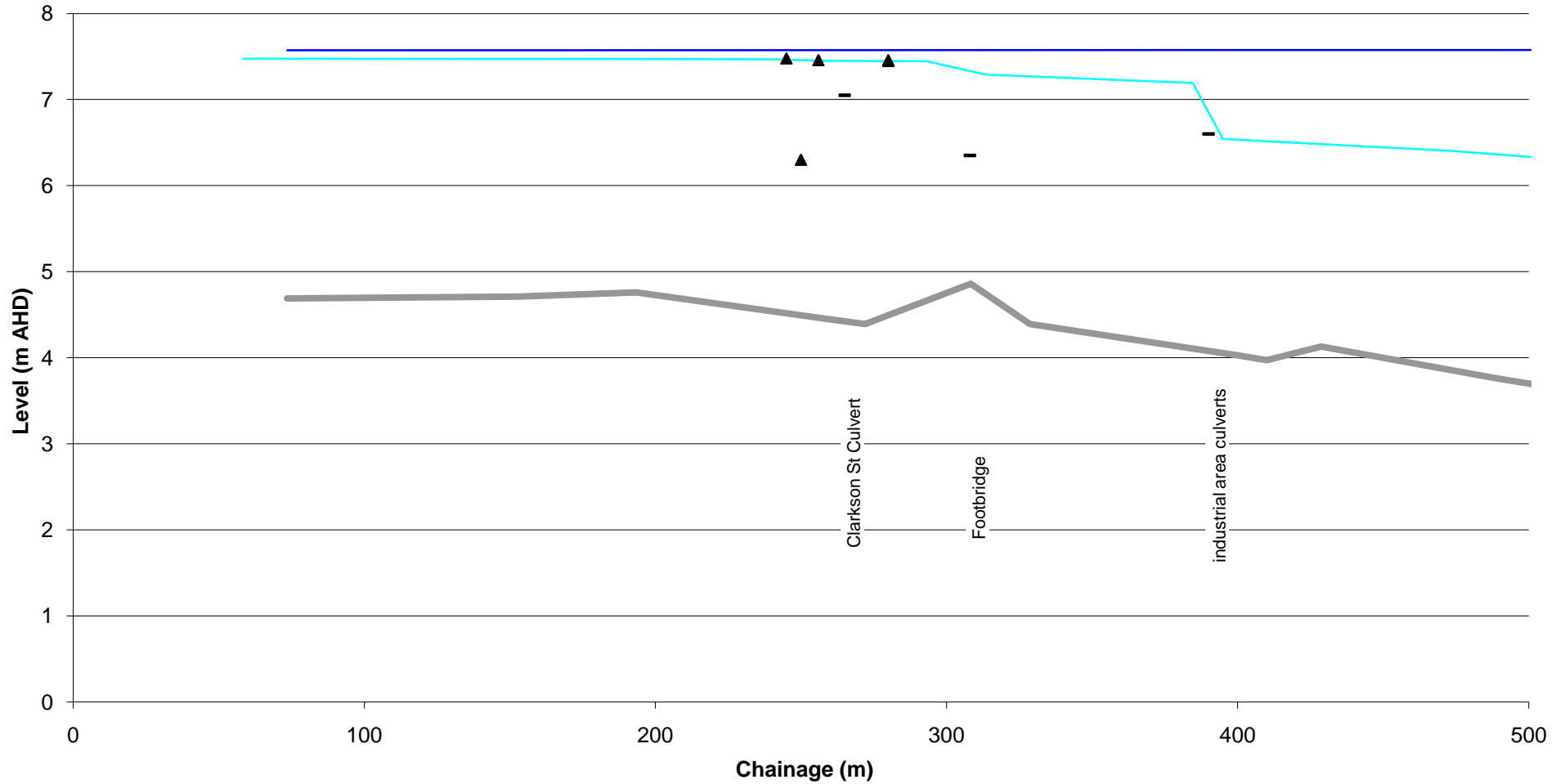
June 2007 Town Creek Profile



June 2007 Woosters Creek Profile

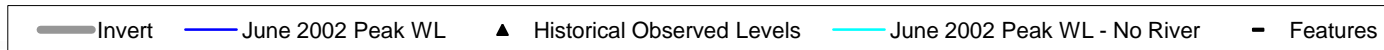
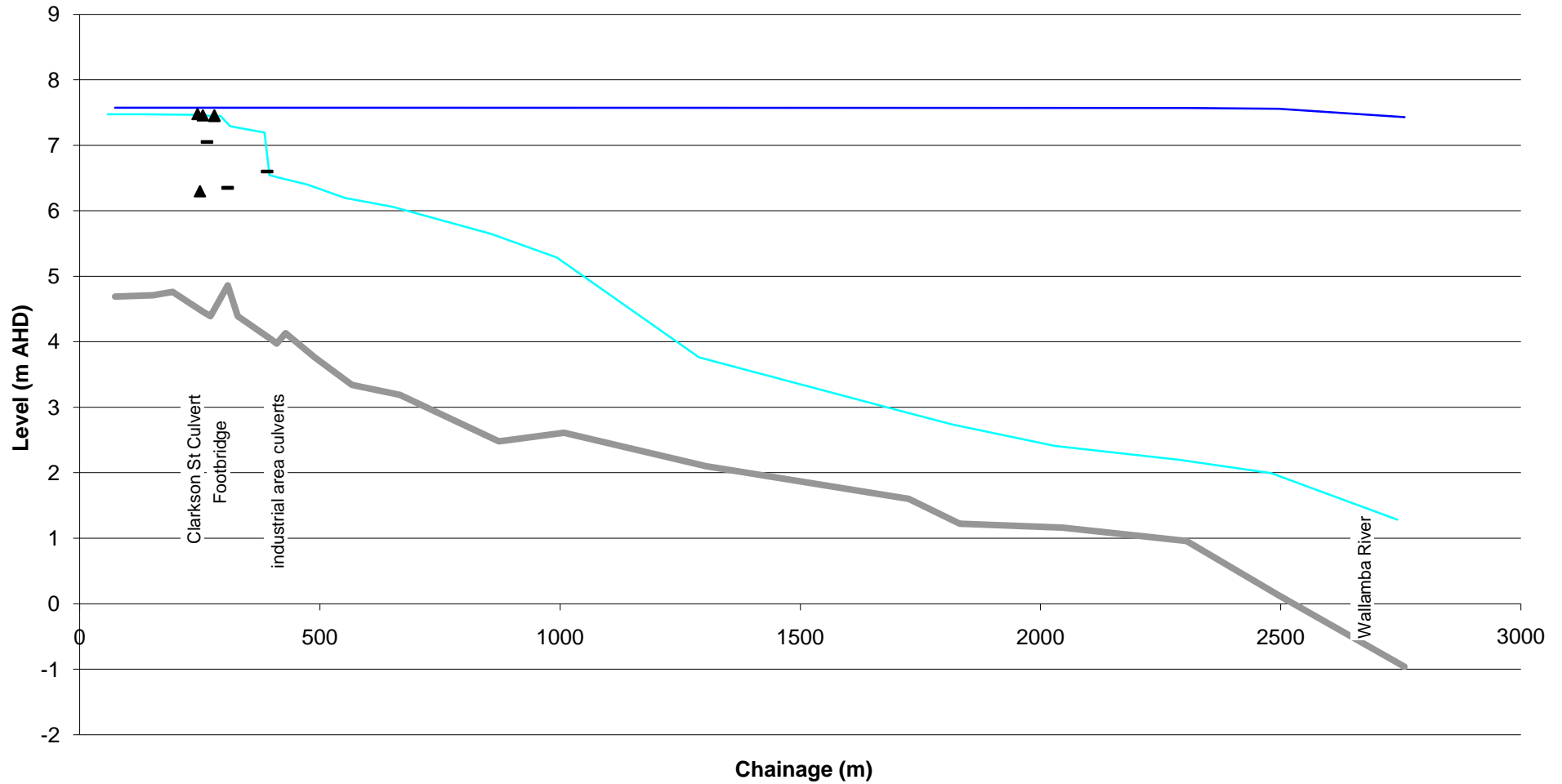


February 2002 Town Creek Profile

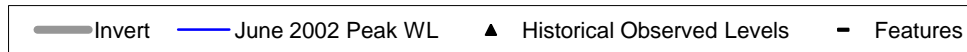
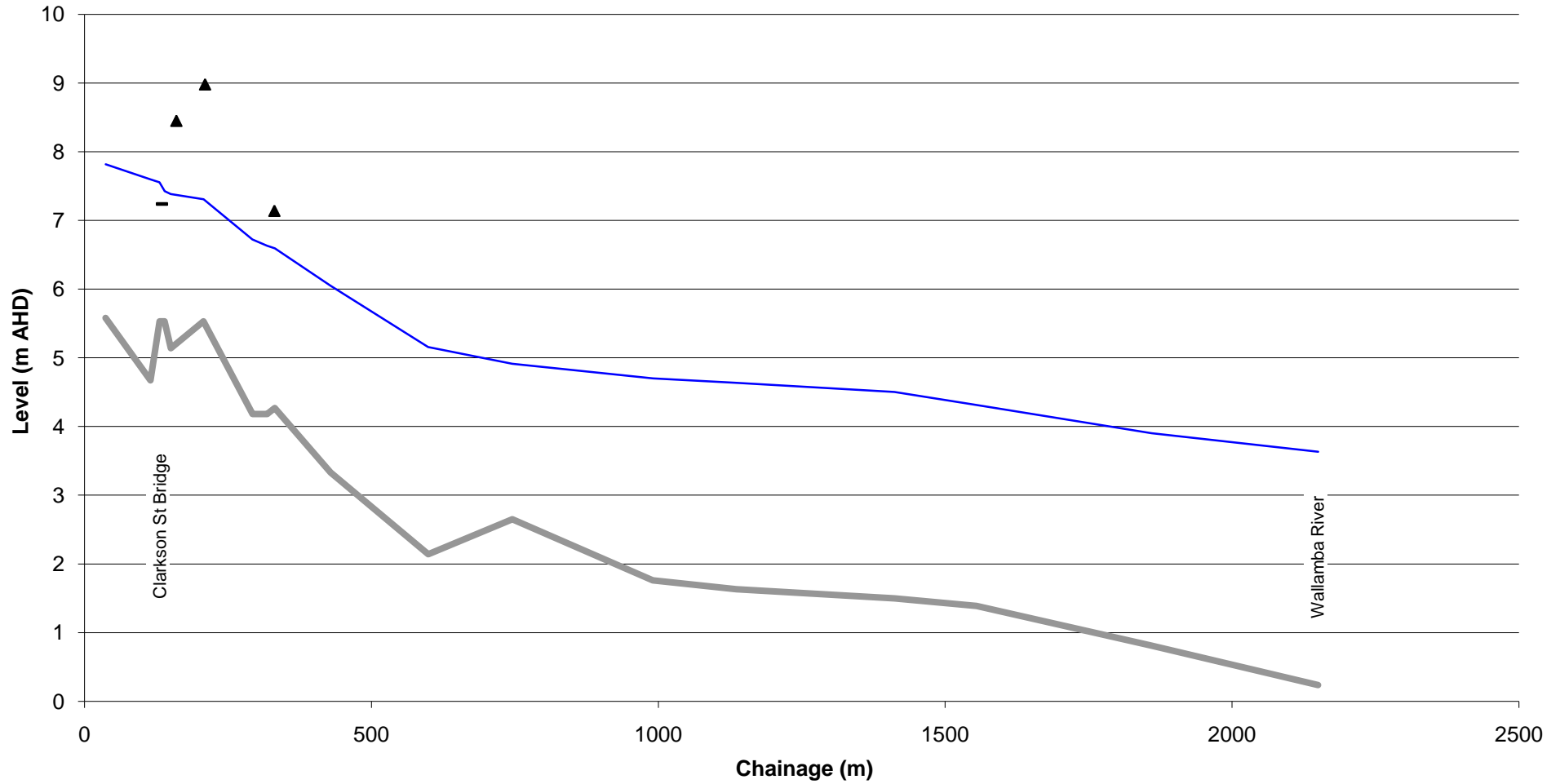


— Invert
— June 2002 Peak WL
▲ Historical Observed Levels
— June 2002 Peak WL - No River
— Features

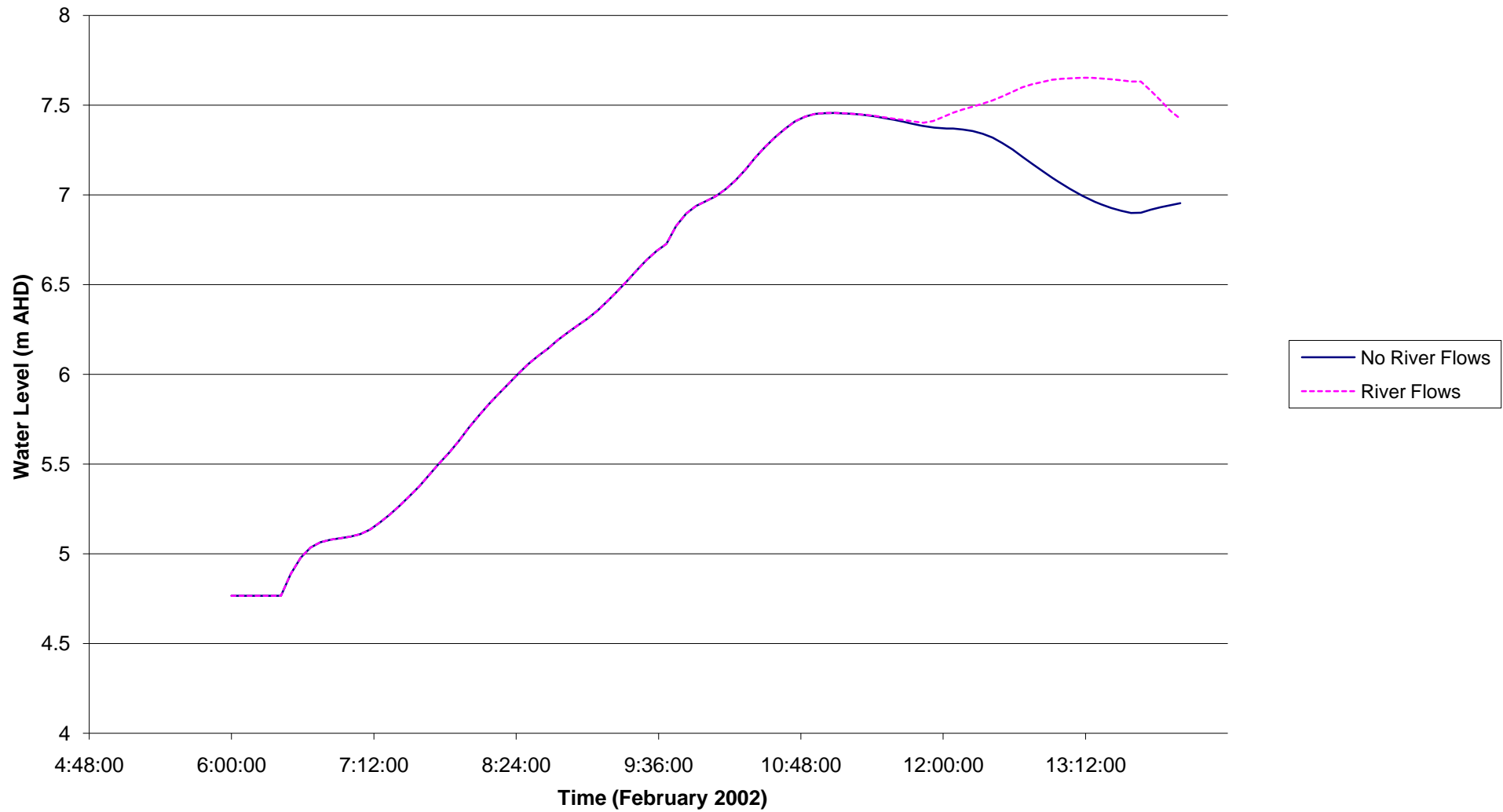
February 2002 Town Creek Profile



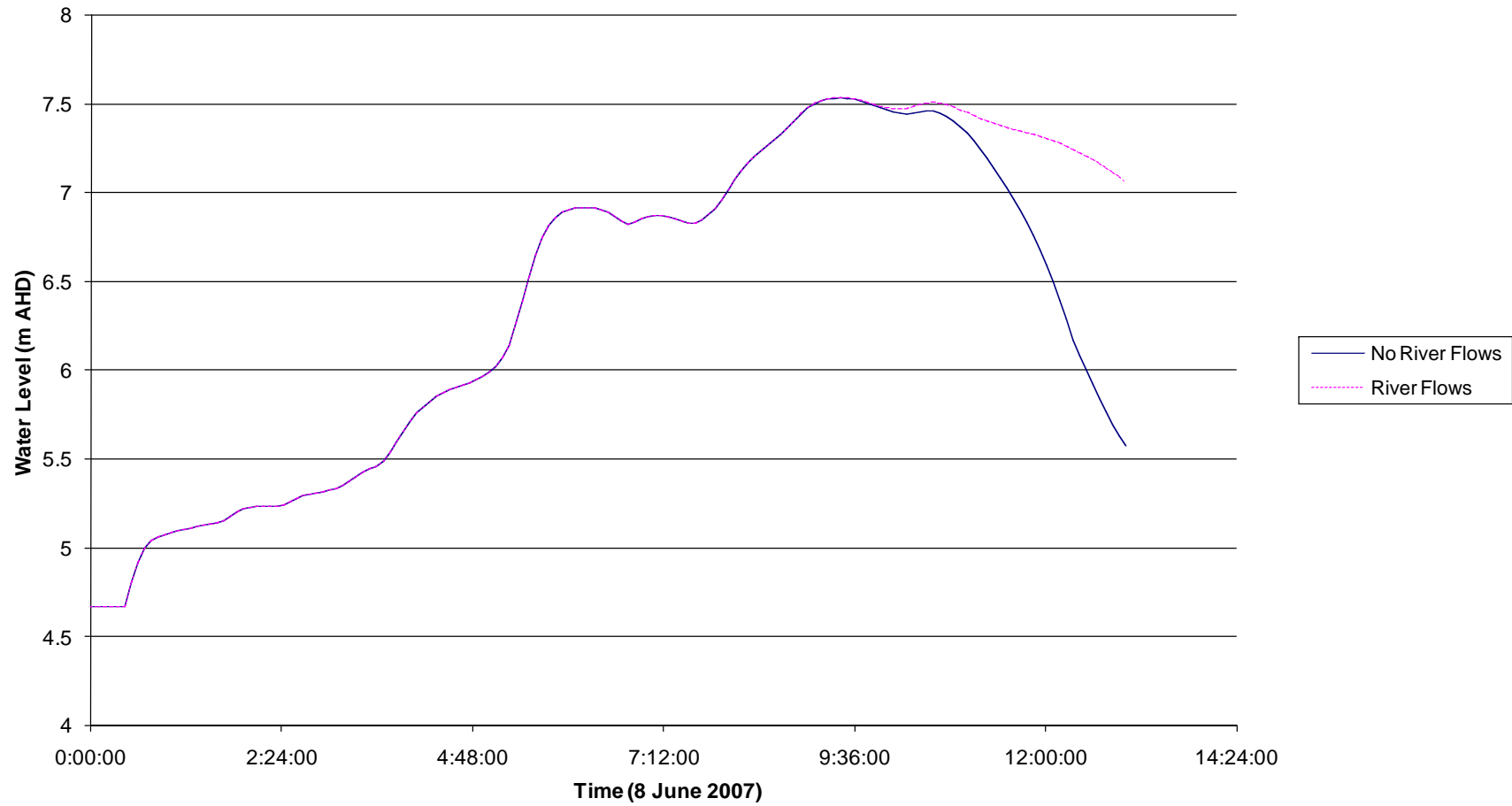
February 2002 Woosters Creek Profile

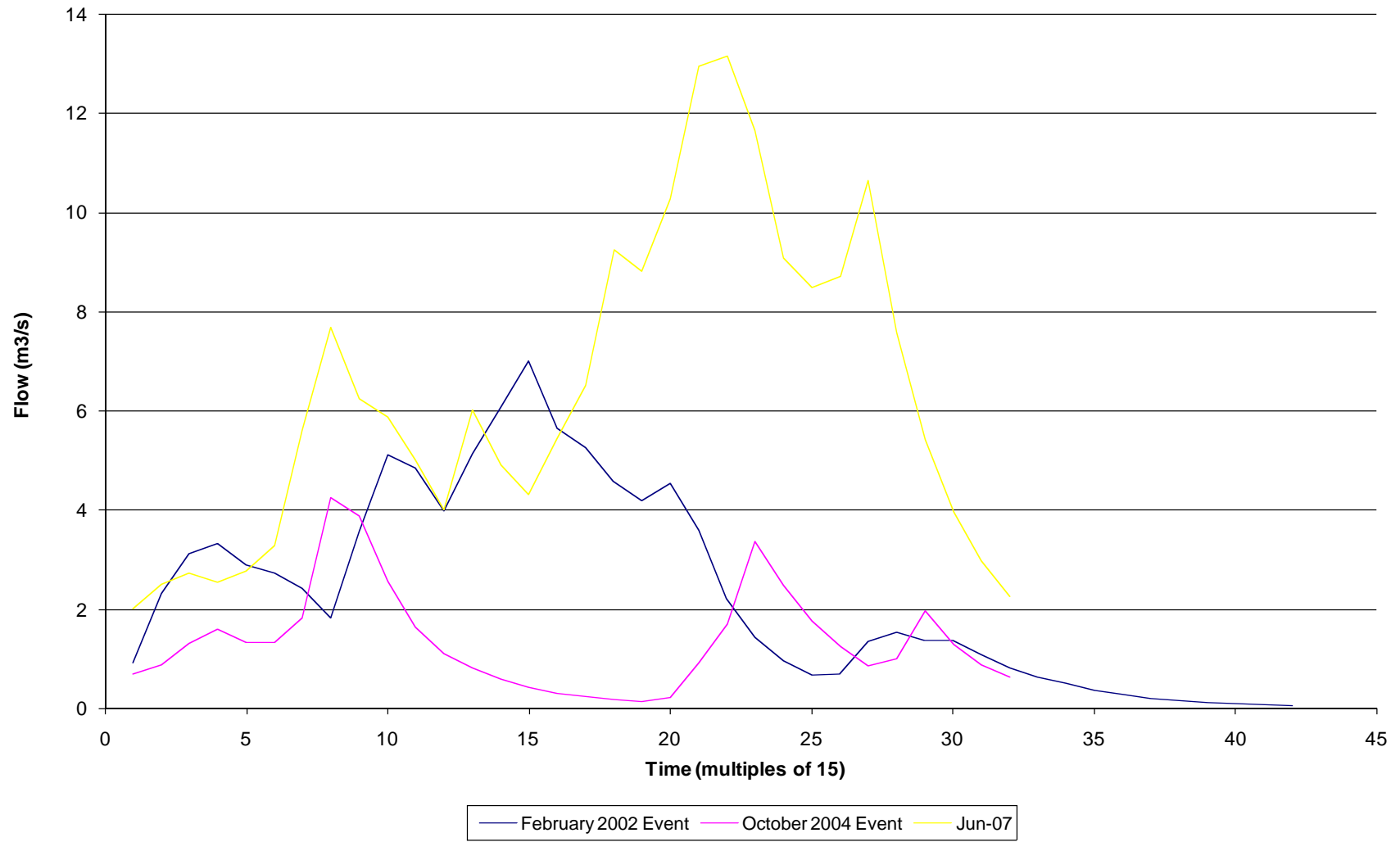


Water Level at Town Creek Footbridge



Water Level at Town Creek Footbridge





NABIAC FLOOD STUDY

Figure 8.12
Comparison of Town Creek Inflows