



Gloucester Floodplain Risk Management Study and Plan

Final Mapping Compendium

May 2021



LEGEND

A Mapping Series Reference

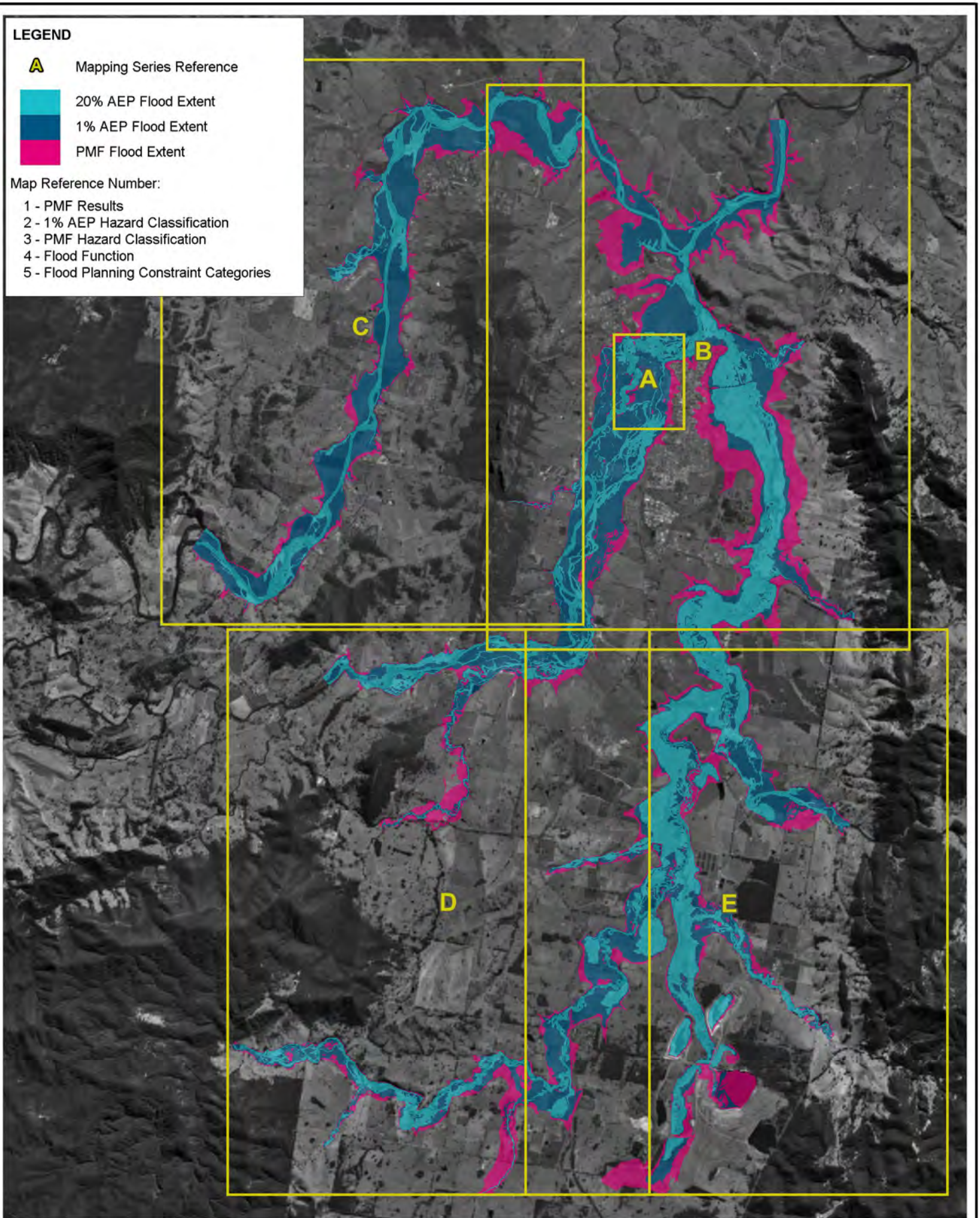
20% AEP Flood Extent

1% AEP Flood Extent

PMF Flood Extent

Map Reference Number:

- 1 - PMF Results
- 2 - 1% AEP Hazard Classification
- 3 - PMF Hazard Classification
- 4 - Flood Function
- 5 - Flood Planning Constraint Categories

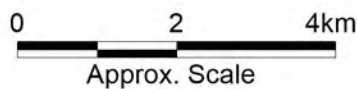


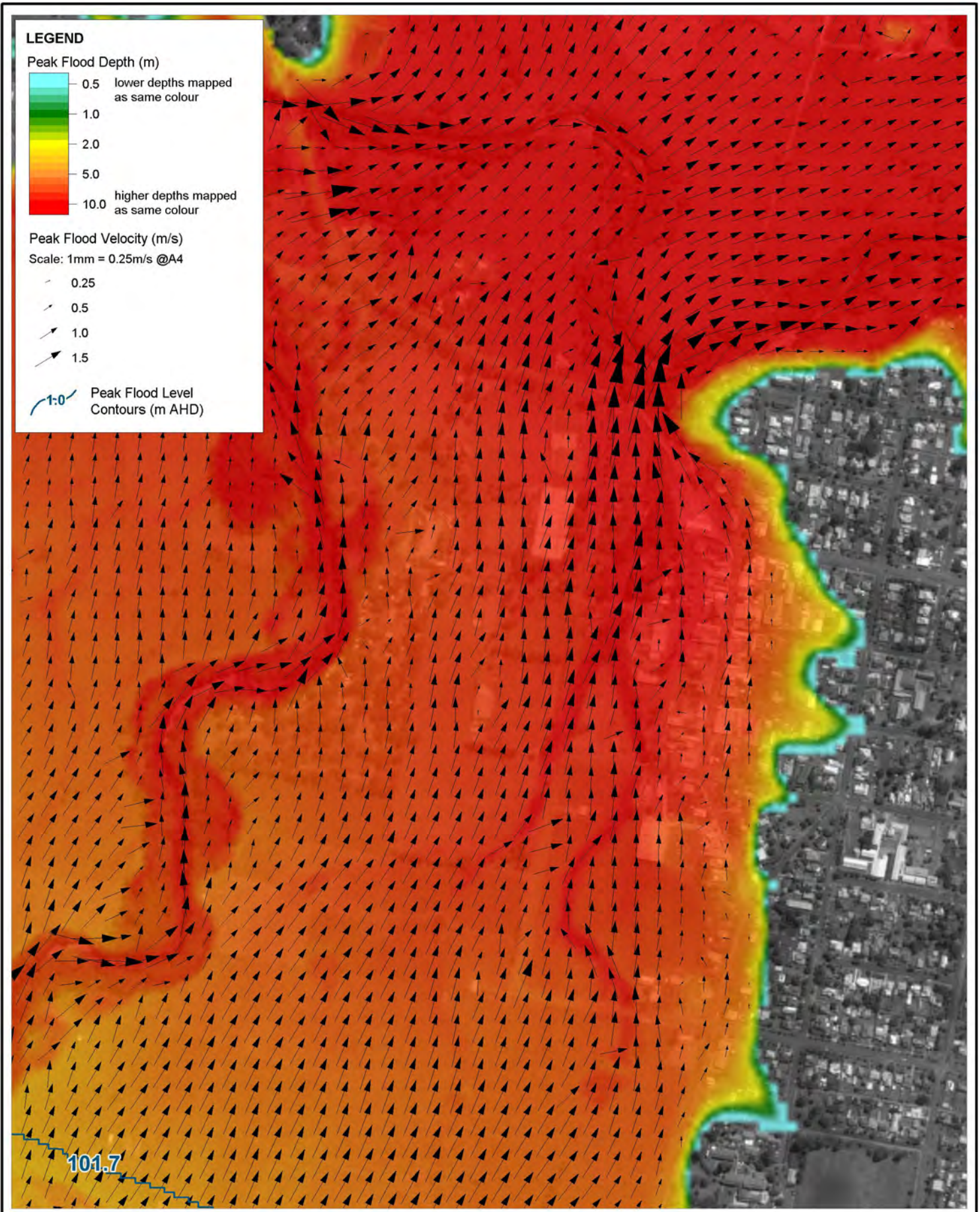
Title:
**Gloucester Floodplain Risk Management Study and Plan
Flood Mapping Index**

Figure:
Index

Rev:
A

BMT endeavours to ensure that the information provided in this map is correct at the time of publication. BMT does not warrant, guarantee or make representations regarding the currency and accuracy of information contained in this map.



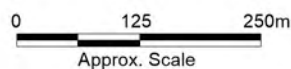


Title:
**PMF Modelled Peak Flood Conditions
 The Billabong**

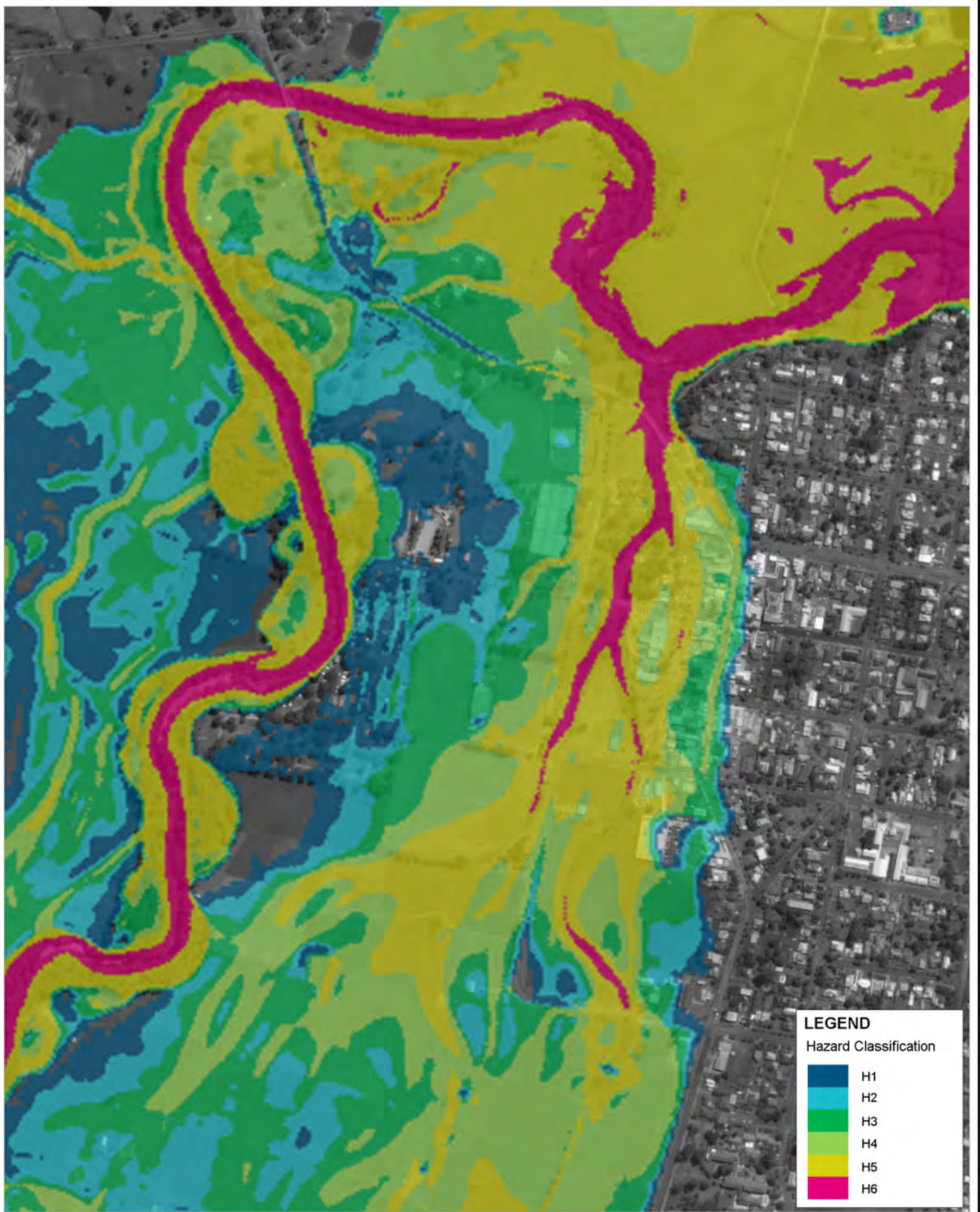
Figure:
A-1

Rev:
A







BMT endeavours to ensure that the information provided in this map is correct at the time of publication. BMT does not warrant, guarantee or make representations regarding the currency and accuracy of information contained in this map.



Filepath: K:\N20952_Gloucester_FRMSP\MapInfo\Workspaces\Mapping\DRG_191029_109_PMF_Results.wor



LEGEND
Hazard Classification

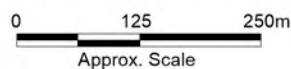
	H1
	H2
	H3
	H4
	H5
	H6

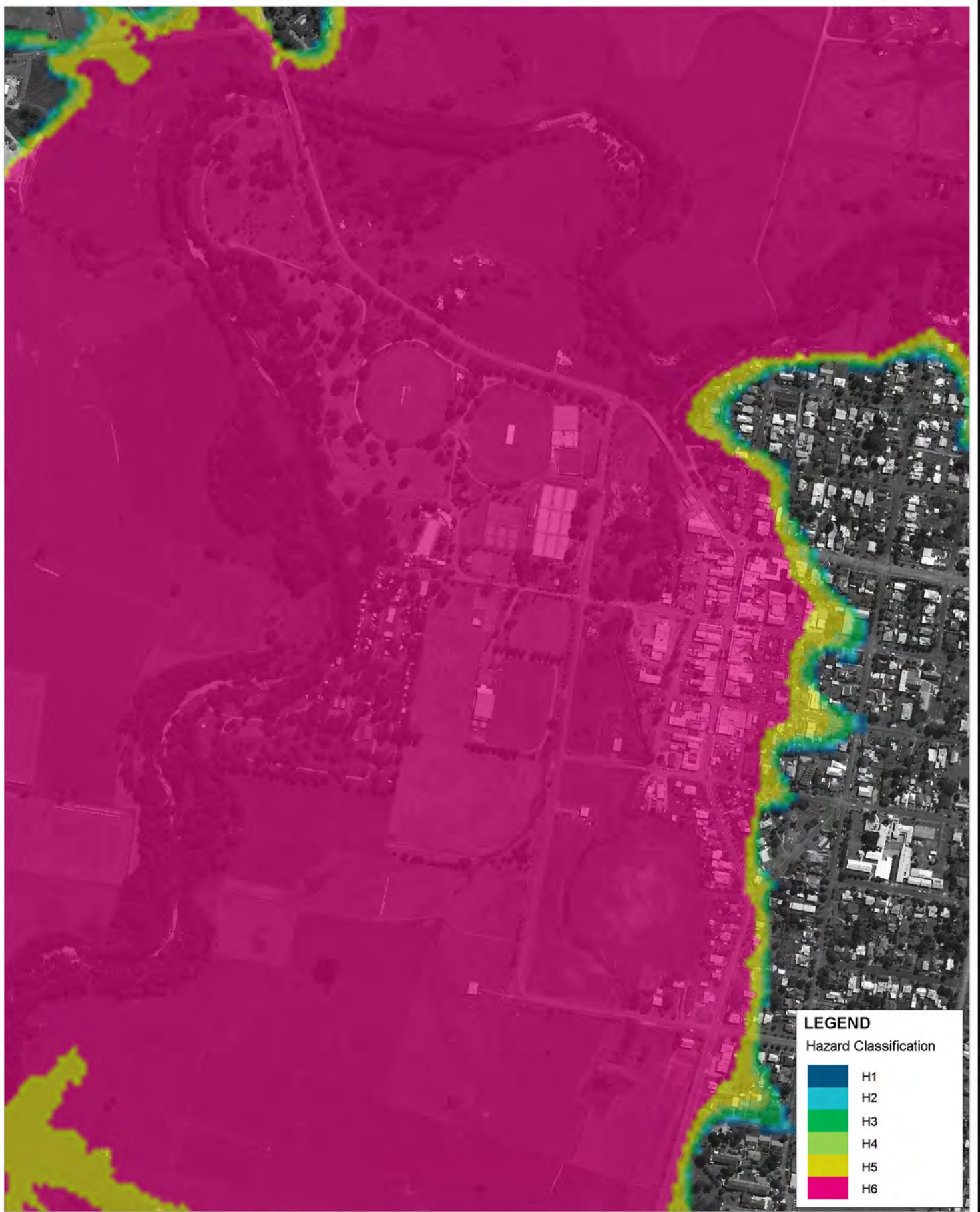
Title:
**1% AEP Hazard Classification
The Billabong**

Figure:
A-2

Rev:
A

BMT endeavours to ensure that the information provided in this map is correct at the time of publication. BMT does not warrant, guarantee or make representations regarding the currency and accuracy of information contained in this map.



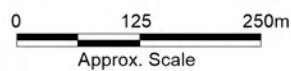


Title:
**PMF Hazard Classification
 The Billabong**

Figure:
A-3

Rev:
A

BMT endeavours to ensure that the information provided in this map is correct at the time of publication. BMT does not warrant, guarantee or make representations regarding the currency and accuracy of information contained in this map.





LEGEND
Hydraulic Category

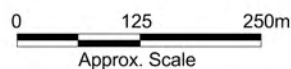
- Flood Fringe
- Flood Storage
- Floodway

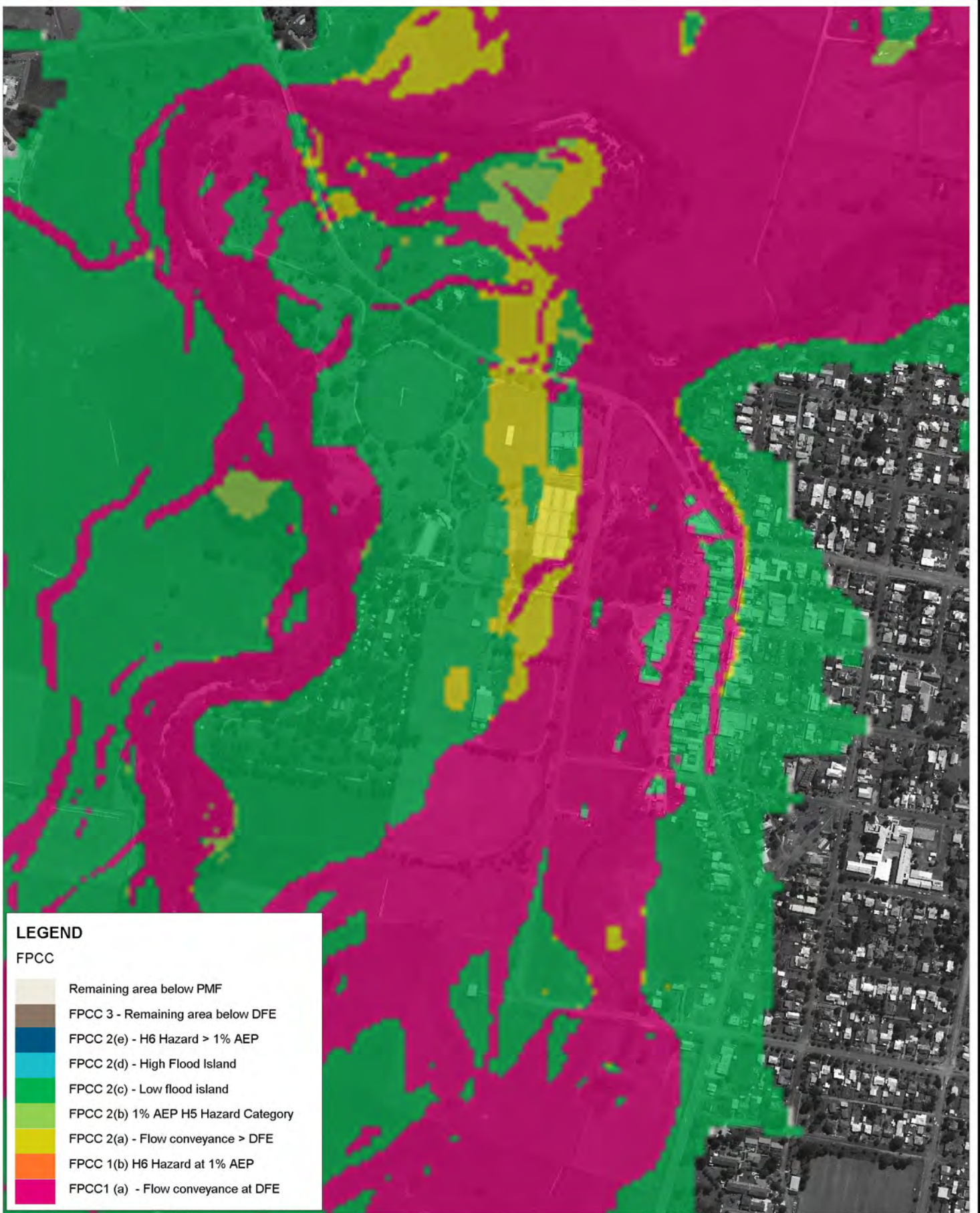
Title:
**Flood Function
The Billabong**

Figure:
A-4

Rev:
B

BMT endeavours to ensure that the information provided in this map is correct at the time of publication. BMT does not warrant, guarantee or make representations regarding the currency and accuracy of information contained in this map.





LEGEND

FPCC

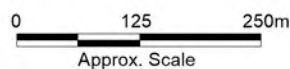
- Remaining area below PMF
- FPCC 3 - Remaining area below DFE
- FPCC 2(e) - H6 Hazard > 1% AEP
- FPCC 2(d) - High Flood Island
- FPCC 2(c) - Low flood island
- FPCC 2(b) 1% AEP H5 Hazard Category
- FPCC 2(a) - Flow conveyance > DFE
- FPCC 1(b) H6 Hazard at 1% AEP
- FPCC1 (a) - Flow conveyance at DFE

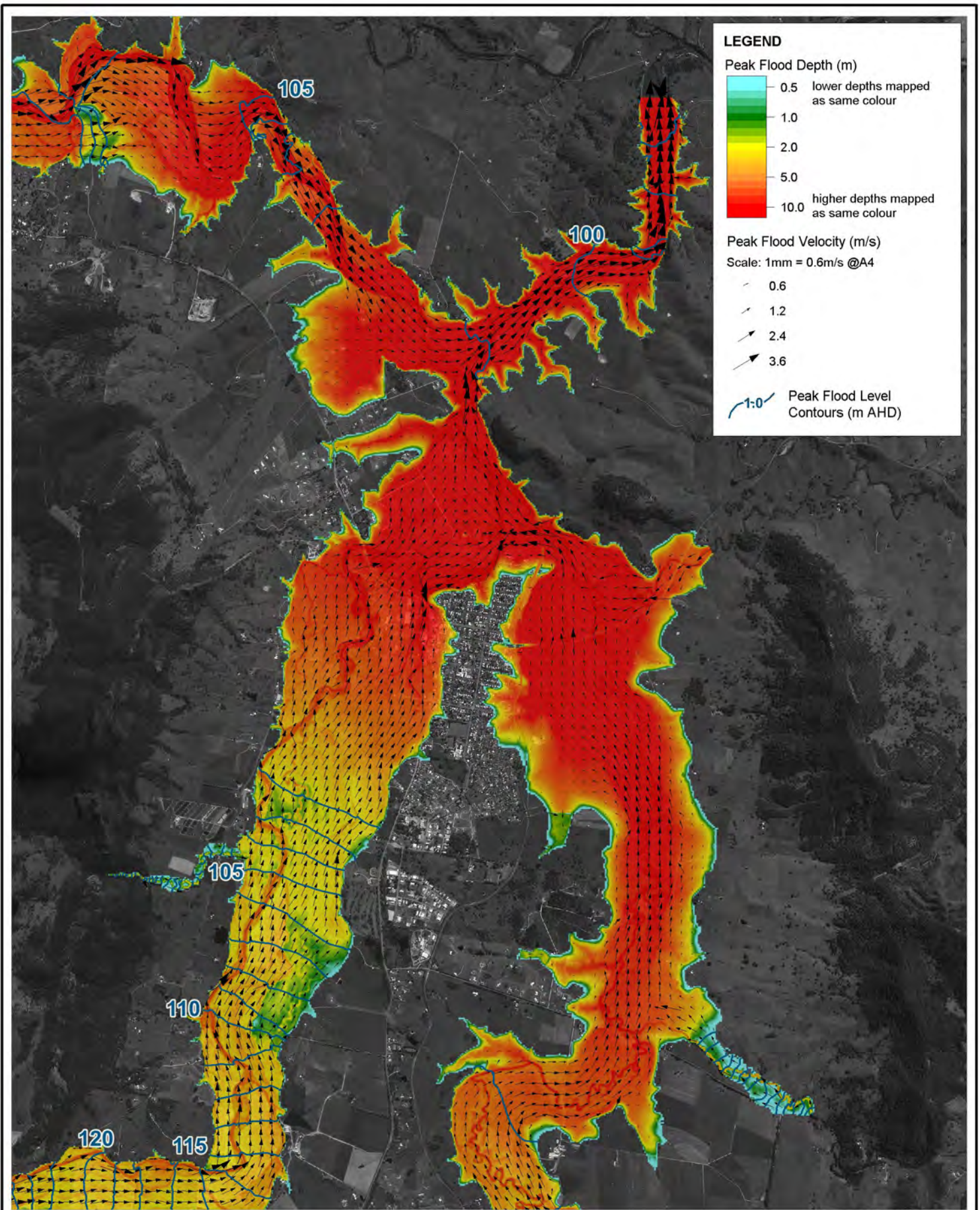
Title:
**Flood Planning Constraint Categories
 The Billabong**

Figure:
A-5

Rev:
A

BMT endeavours to ensure that the information provided in this map is correct at the time of publication. BMT does not warrant, guarantee or make representations regarding the currency and accuracy of information contained in this map.





LEGEND

Peak Flood Depth (m)

- 0.5 lower depths mapped as same colour
- 1.0
- 2.0
- 5.0
- 10.0 higher depths mapped as same colour

Peak Flood Velocity (m/s)

Scale: 1mm = 0.6m/s @A4

- 0.6
- 1.2
- 2.4
- 3.6

1:0 Peak Flood Level Contours (m AHD)

Title:
**PMF Modelled Peak Flood Conditions
 Gloucester / Confluences**

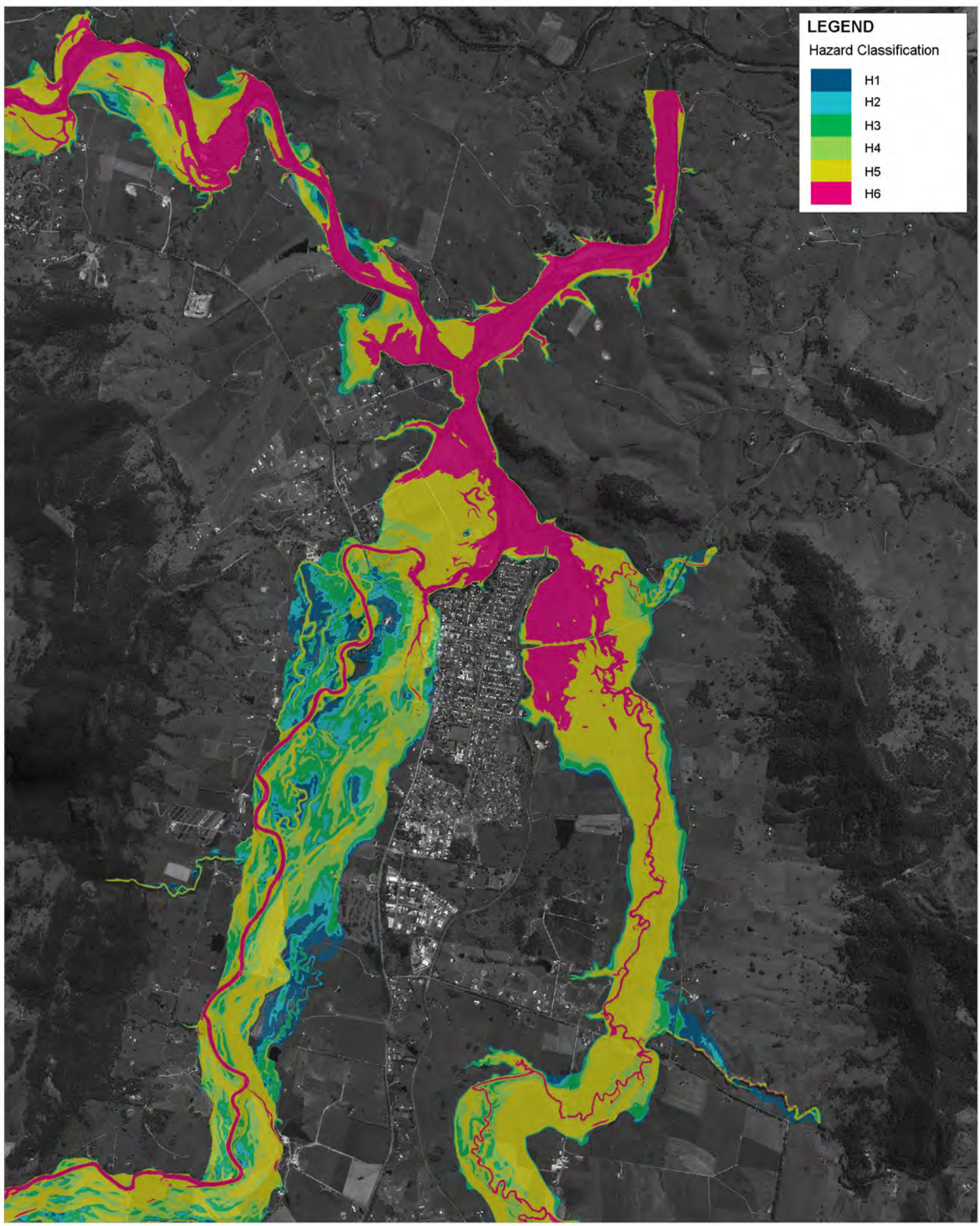
Figure:
B-1

Rev:
A







BMT endeavours to ensure that the information provided in this map is correct at the time of publication. BMT does not warrant, guarantee or make representations regarding the currency and accuracy of information contained in this map.



Filepath: K:\N20952_Gloucester_FRMSP\MapInfo\Workspaces\Mapping\DRG_191029_209_PMF_Results.wor



LEGEND
Hazard Classification

	H1
	H2
	H3
	H4
	H5
	H6

Title:
**1% AEP Hazard Classification
Gloucester / Confluences**

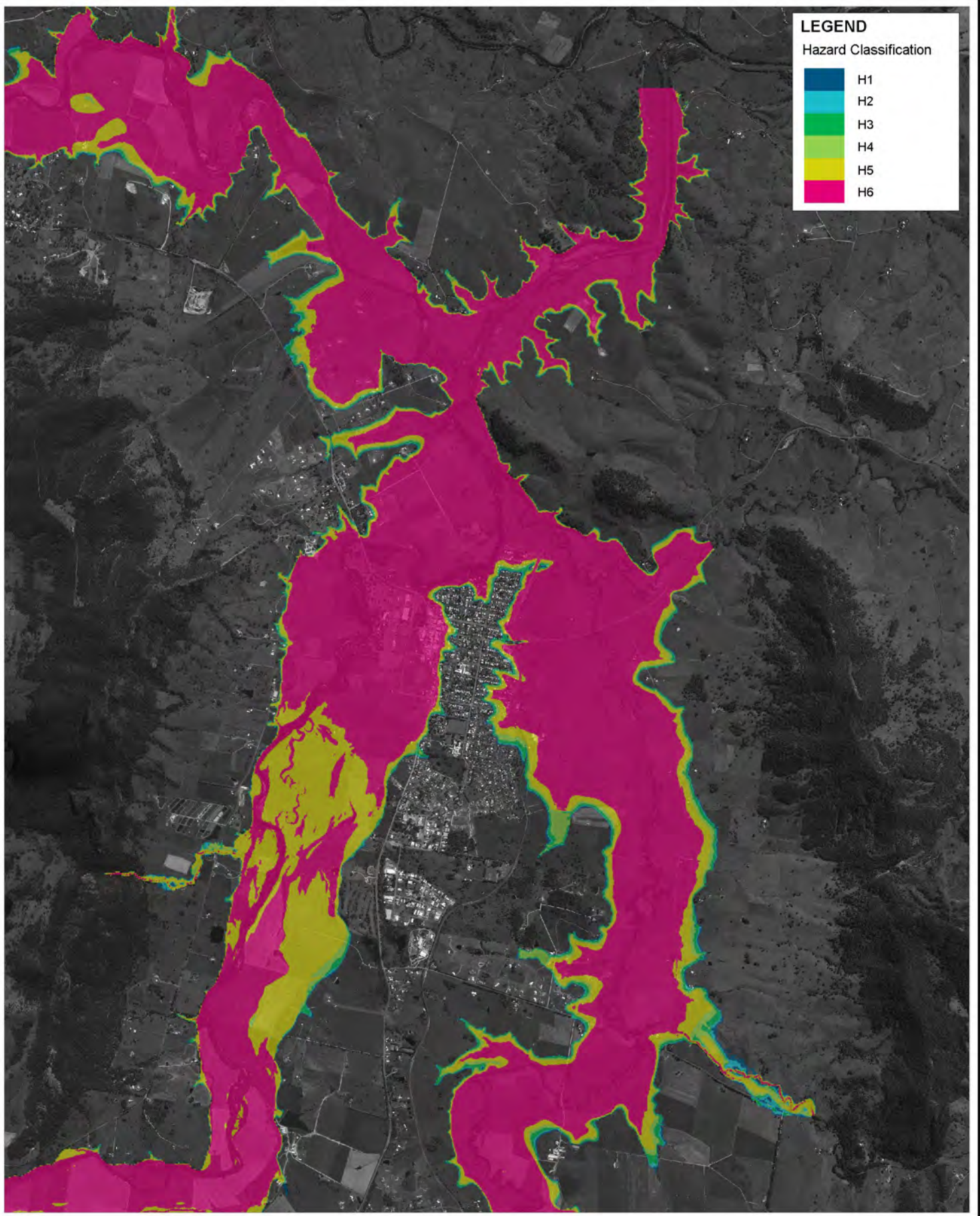
Figure:
B-2

Rev:
A







BMT endeavours to ensure that the information provided in this map is correct at the time of publication. BMT does not warrant, guarantee or make representations regarding the currency and accuracy of information contained in this map.



Filepath: K:\N20952_Gloucester_FRMSP\MapInfo\Workspaces\Mapping\DRG_191029_210_1%_Hazard.wor



LEGEND
Hazard Classification

	H1
	H2
	H3
	H4
	H5
	H6

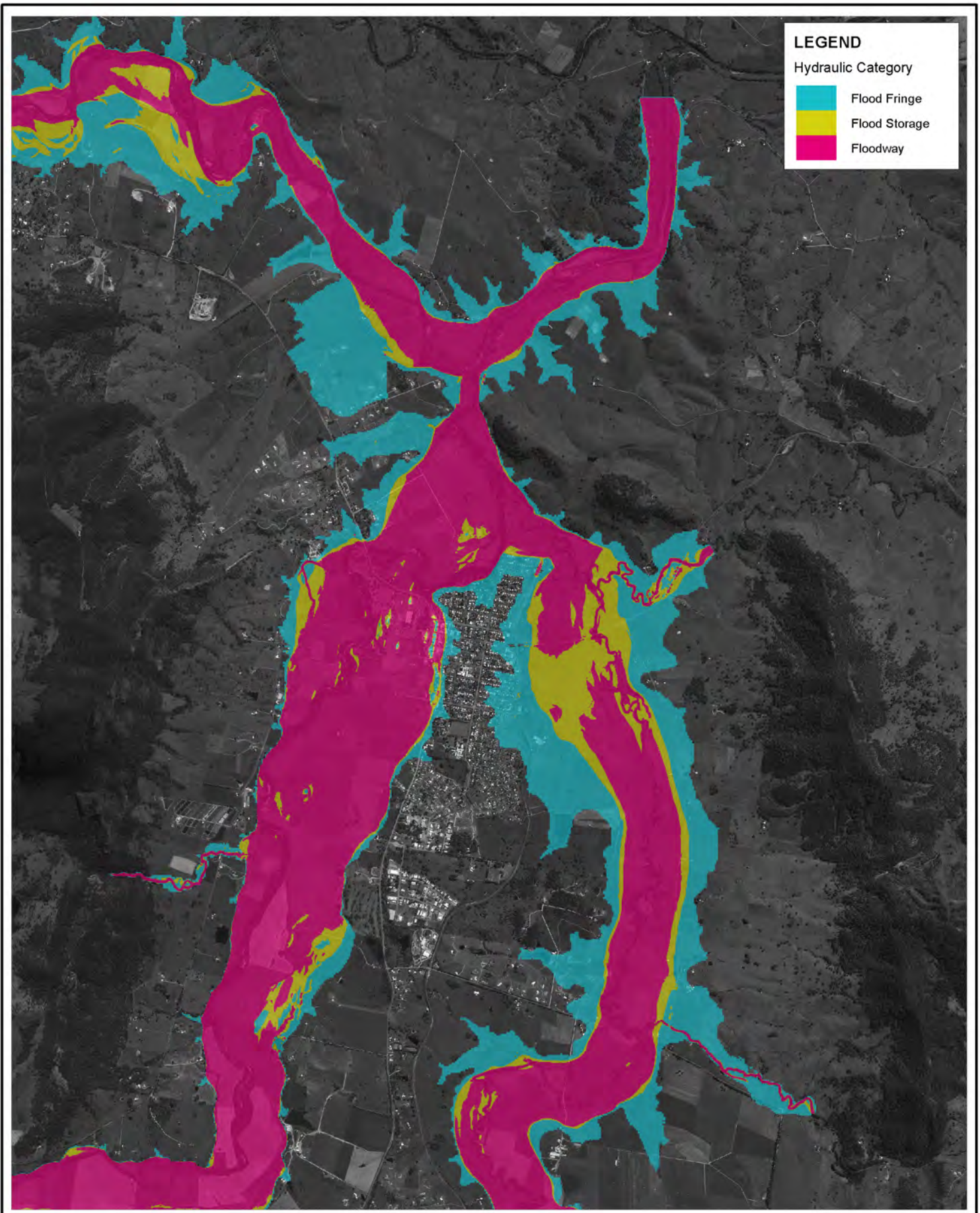
Title:
**PMF Hazard Classification
Gloucester / Confluences**

Figure: B-3	Rev: A
-----------------------	------------------

BMT endeavours to ensure that the information provided in this map is correct at the time of publication. BMT does not warrant, guarantee or make representations regarding the currency and accuracy of information contained in this map.



Filepath: K:\N20952_Gloucester_FRMSP\MapInfo\Workspaces\Mapping\DRG_191029_211_PMF_Hazard.wor



LEGEND

Hydraulic Category

- Flood Fringe
- Flood Storage
- Floodway

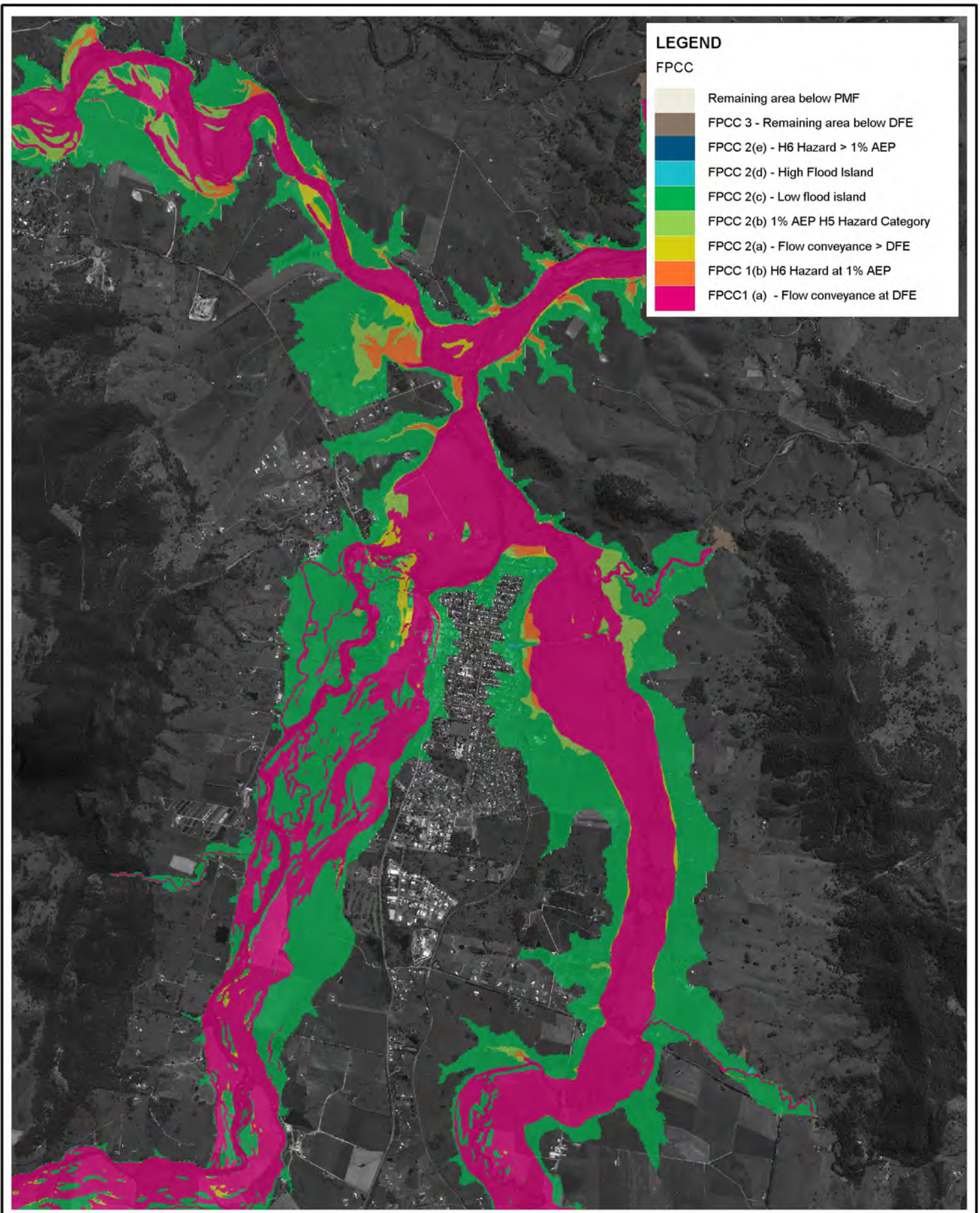
Title:
**Flood Function
 Gloucester / Confluences**

Figure: B-4	Rev: B
-----------------------	------------------

BMT endeavours to ensure that the information provided in this map is correct at the time of publication. BMT does not warrant, guarantee or make representations regarding the currency and accuracy of information contained in this map.



Filepath: K:\N20952_Gloucester_FRMSP\MapInfo\Workspaces\Mapping\DRG_200713_212_Flood_Function.wor



Title:
**Flood Planning Constraint Categories
 Gloucester / Confluences**

Figure:
B-5

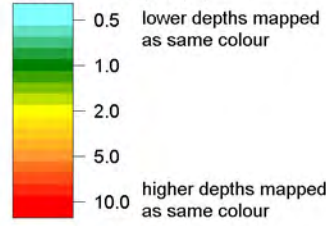
Rev:
A

BMT endeavours to ensure that the information provided in this map is correct at the time of publication. BMT does not warrant, guarantee or make representations regarding the currency and accuracy of information contained in this map.



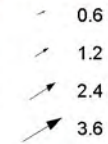
LEGEND


Peak Flood Depth (m)

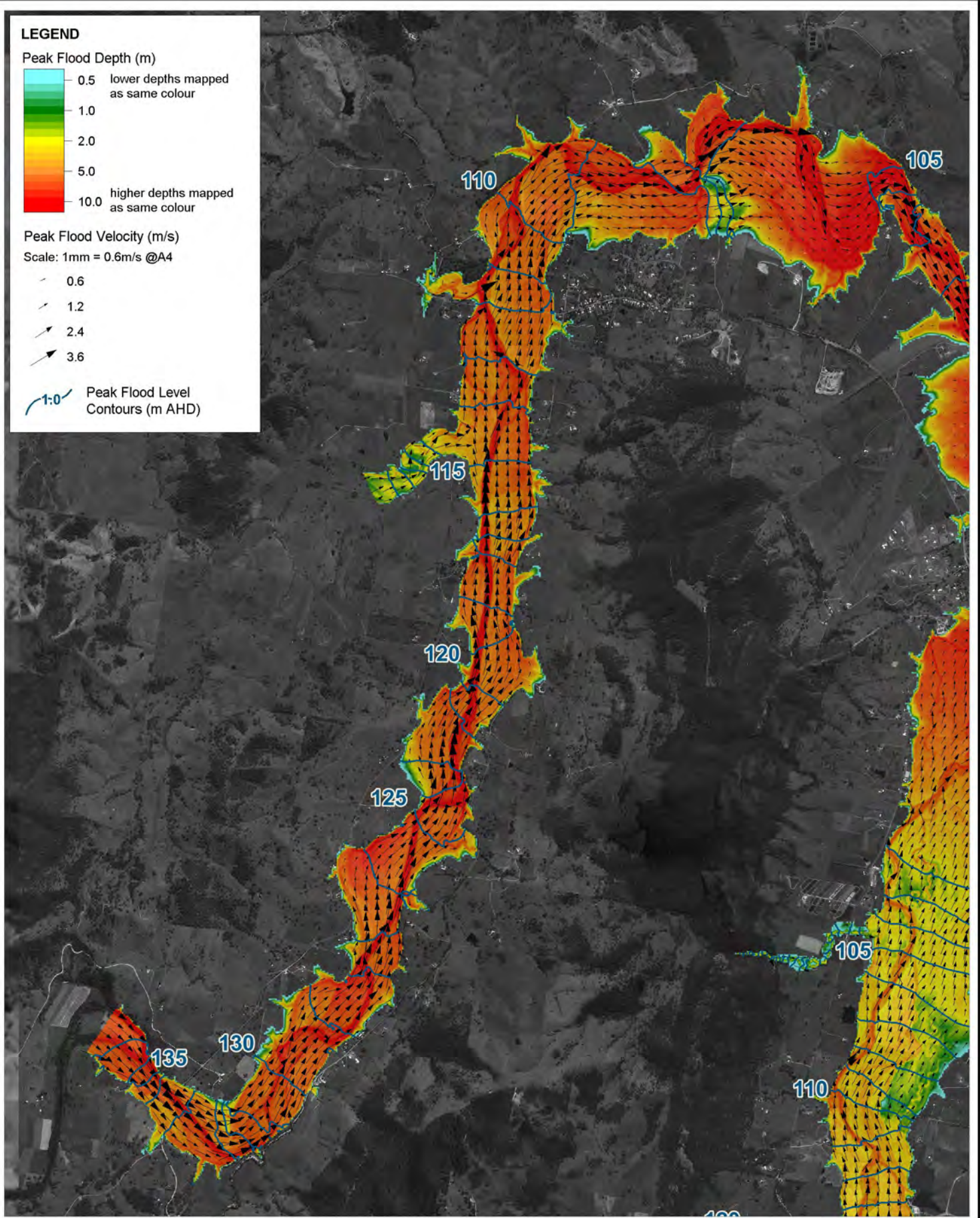


Peak Flood Velocity (m/s)

Scale: 1mm = 0.6m/s @A4



 Peak Flood Level Contours (m AHD)



Title:
**PMF Modelled Peak Flood Conditions
Barrington River**

Figure:
C-1

Rev:
A







BMT endeavours to ensure that the information provided in this map is correct at the time of publication. BMT does not warrant, guarantee or make representations regarding the currency and accuracy of information contained in this map.

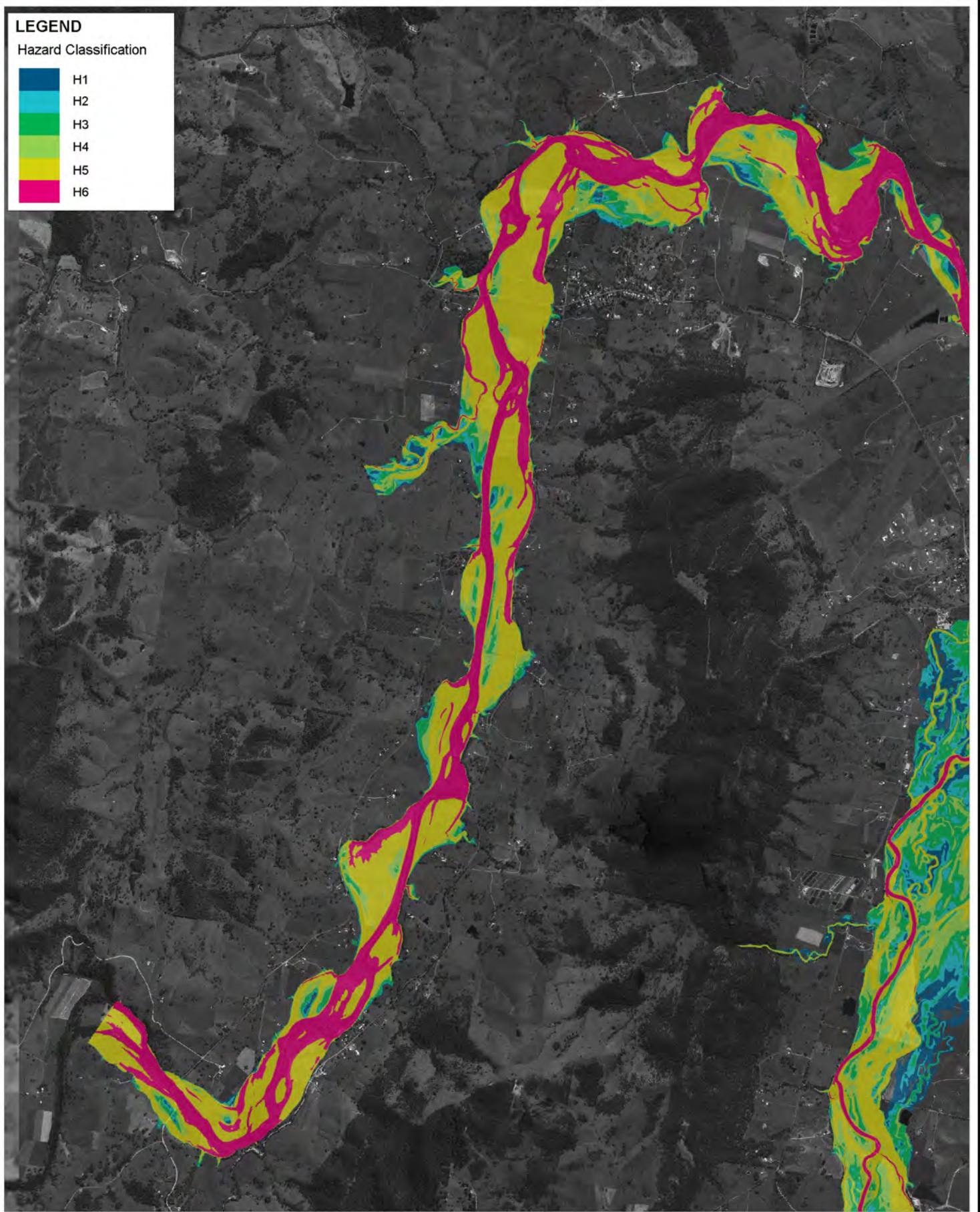


Filepath: K:\N20952_Gloucester_FRMSP\MapInfo\Workspaces\Mapping\DRG_191029_309_PMF_Results.wor

LEGEND

Hazard Classification

-  H1
-  H2
-  H3
-  H4
-  H5
-  H6



Title:
**1% AEP Hazard Classification
Barrington River**

Figure:
C-2

Rev:
A

BMT endeavours to ensure that the information provided in this map is correct at the time of publication. BMT does not warrant, guarantee or make representations regarding the currency and accuracy of information contained in this map.

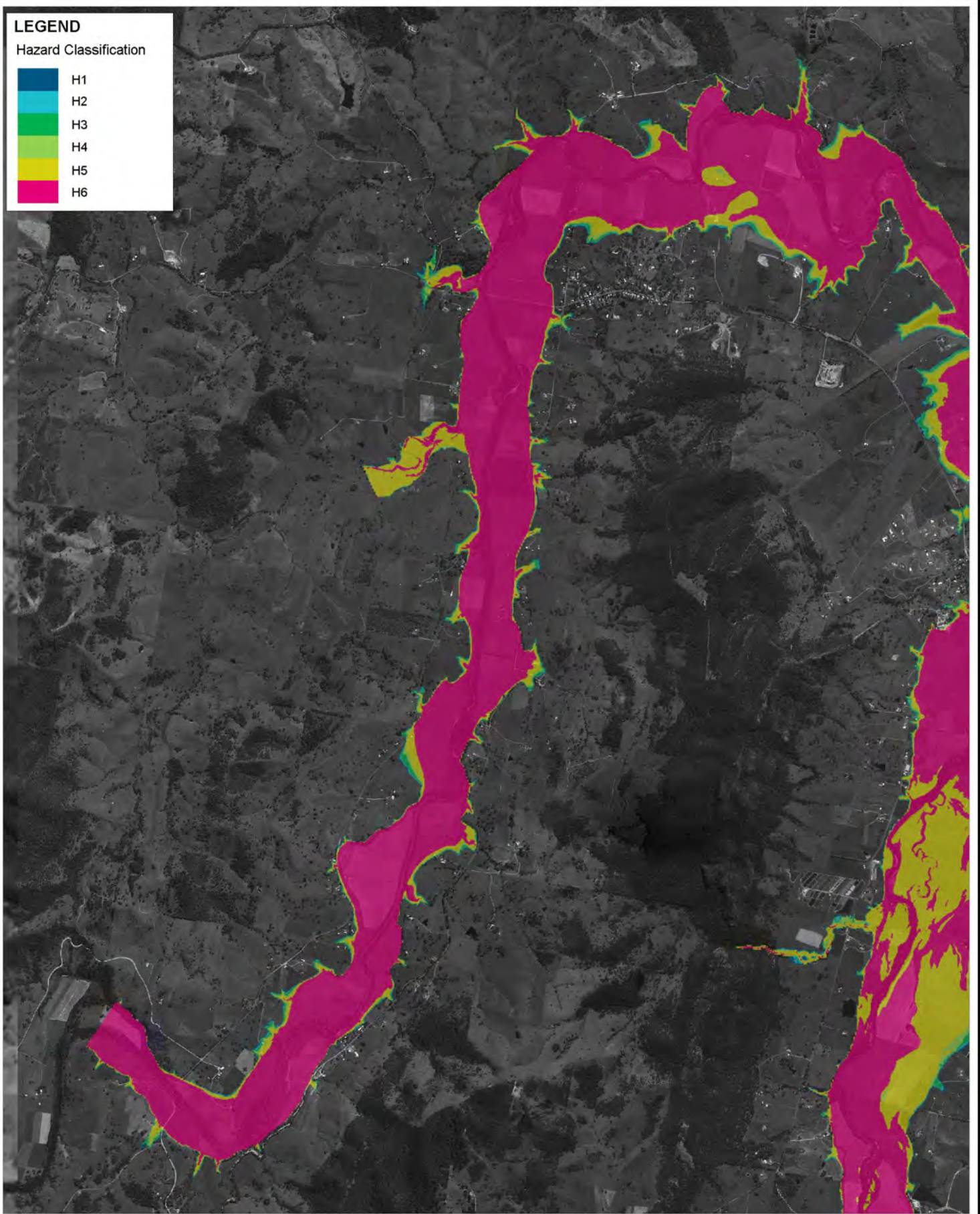


Filepath: K:\N20952_Gloucester_FRMSP\MapInfo\Workspaces\Mapping\DRG_191029_310_1%_Hazard.wor

LEGEND

Hazard Classification

-  H1
-  H2
-  H3
-  H4
-  H5
-  H6



Title:
**PMF Hazard Classification
Barrington River**

Figure:
C-3

Rev:
A

BMT endeavours to ensure that the information provided in this map is correct at the time of publication. BMT does not warrant, guarantee or make representations regarding the currency and accuracy of information contained in this map.

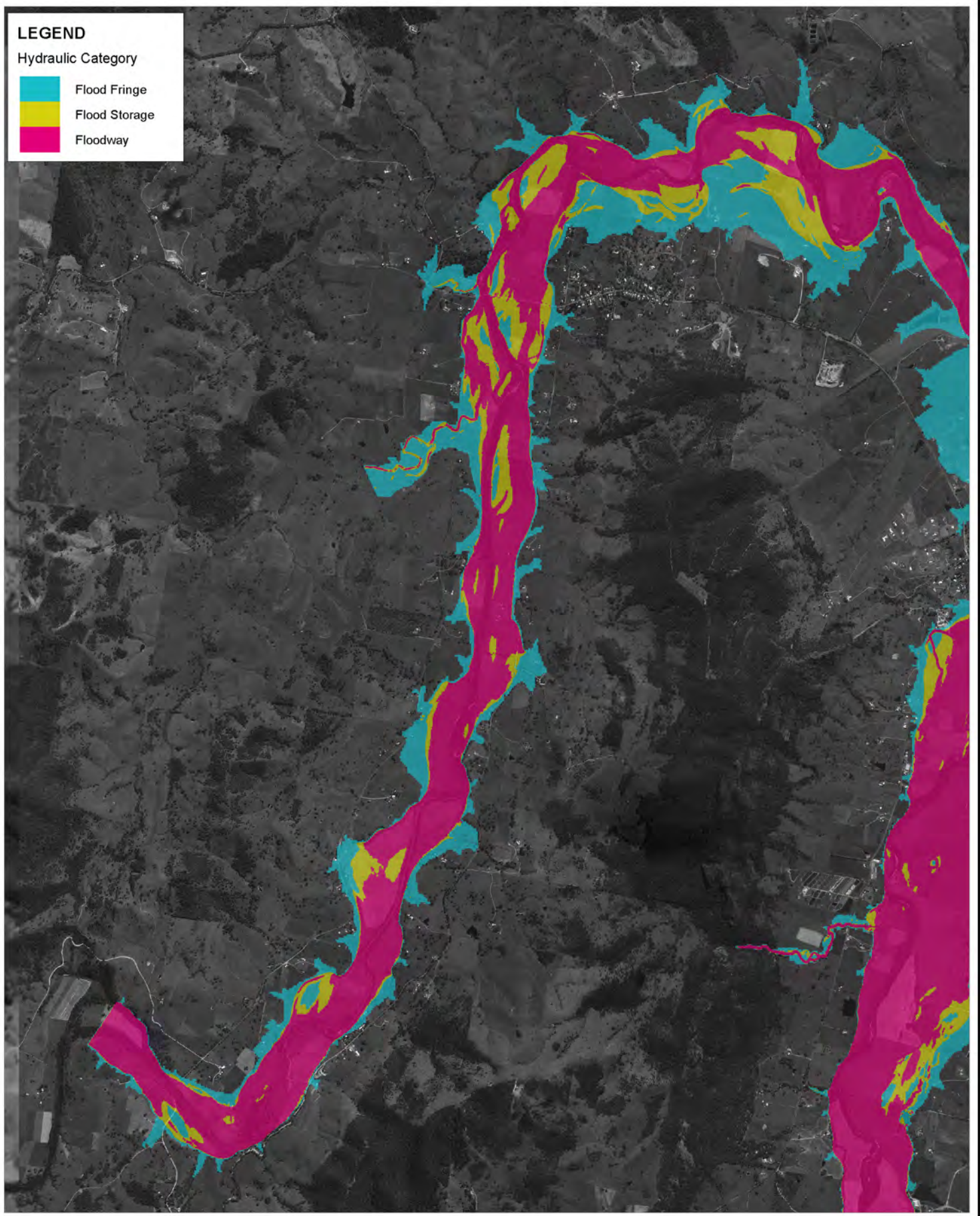


Filepath: K:\N20952_Gloucester_FRMSP\MapInfo\Workspaces\Mapping\DRG_191029_311_PMF_Hazard.wor

LEGEND

Hydraulic Category

-  Flood Fringe
-  Flood Storage
-  Floodway



Title:
**Flood Function
Barrington River**

Figure:
C-4

Rev:
B


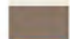

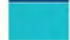


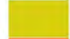


BMT endeavours to ensure that the information provided in this map is correct at the time of publication. BMT does not warrant, guarantee or make representations regarding the currency and accuracy of information contained in this map.

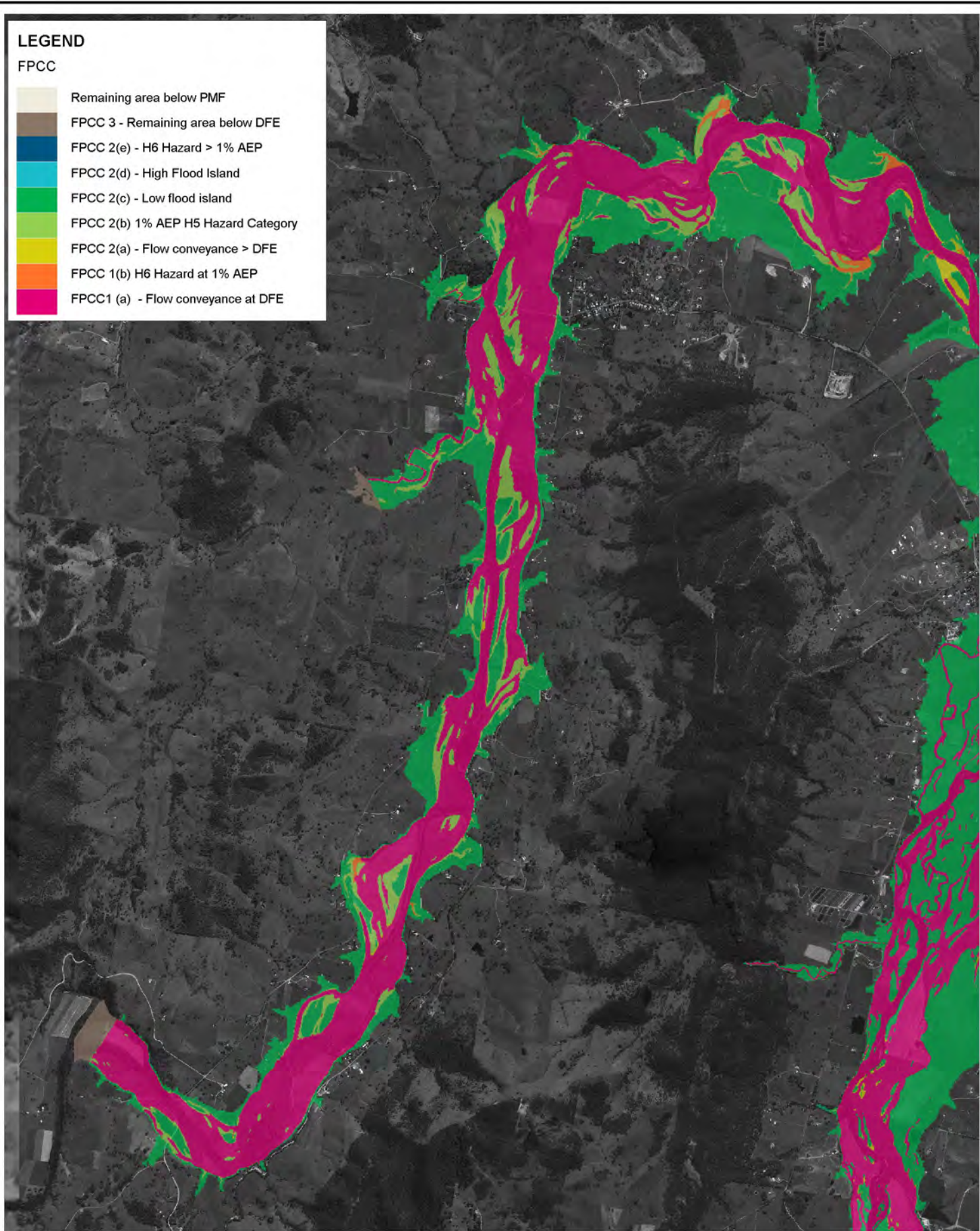


Filepath: K:\N20952_Gloucester_FRMSP\MapInfo\Workspaces\Mapping\DRG_200713_312_Flood_Function.wor

LEGEND

FPCC

-  Remaining area below PMF
-  FPCC 3 - Remaining area below DFE
-  FPCC 2(e) - H6 Hazard > 1% AEP
-  FPCC 2(d) - High Flood Island
-  FPCC 2(c) - Low flood island
-  FPCC 2(b) 1% AEP H5 Hazard Category
-  FPCC 2(a) - Flow conveyance > DFE
-  FPCC 1(b) H6 Hazard at 1% AEP
-  FPCC1 (a) - Flow conveyance at DFE



Title:
**Flood Planning Constraint Categories
Barrington River**

Figure:
C-5

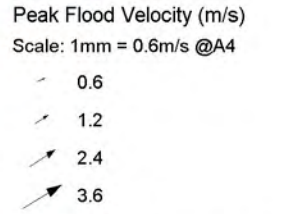
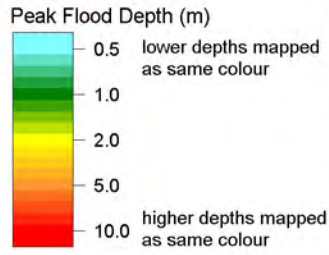
Rev:
A

BMT endeavours to ensure that the information provided in this map is correct at the time of publication. BMT does not warrant, guarantee or make representations regarding the currency and accuracy of information contained in this map.

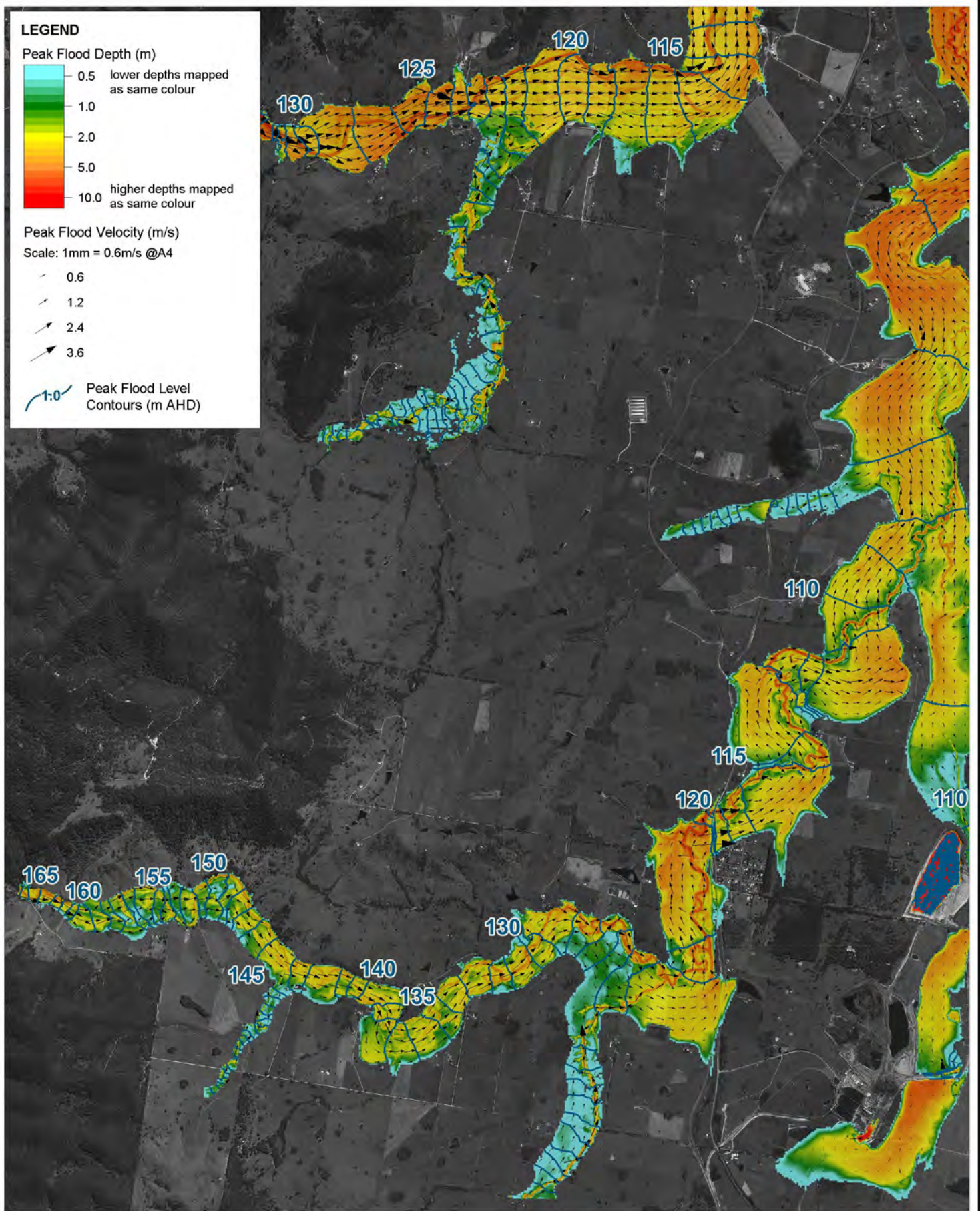


Filepath: K:\N20952_Gloucester_FRMSP\MapInfo\Workspaces\Mapping\DRG_191029_313_FPCC.wor

LEGEND



Peak Flood Level Contours (m AHD)



Title:
**PMF Modelled Peak Flood Conditions
 Gloucester River / Upper Avon**

Figure:
D-1

Rev:
A


BMT endeavours to ensure that the information provided in this map is correct at the time of publication. BMT does not warrant, guarantee or make representations regarding the currency and accuracy of information contained in this map.

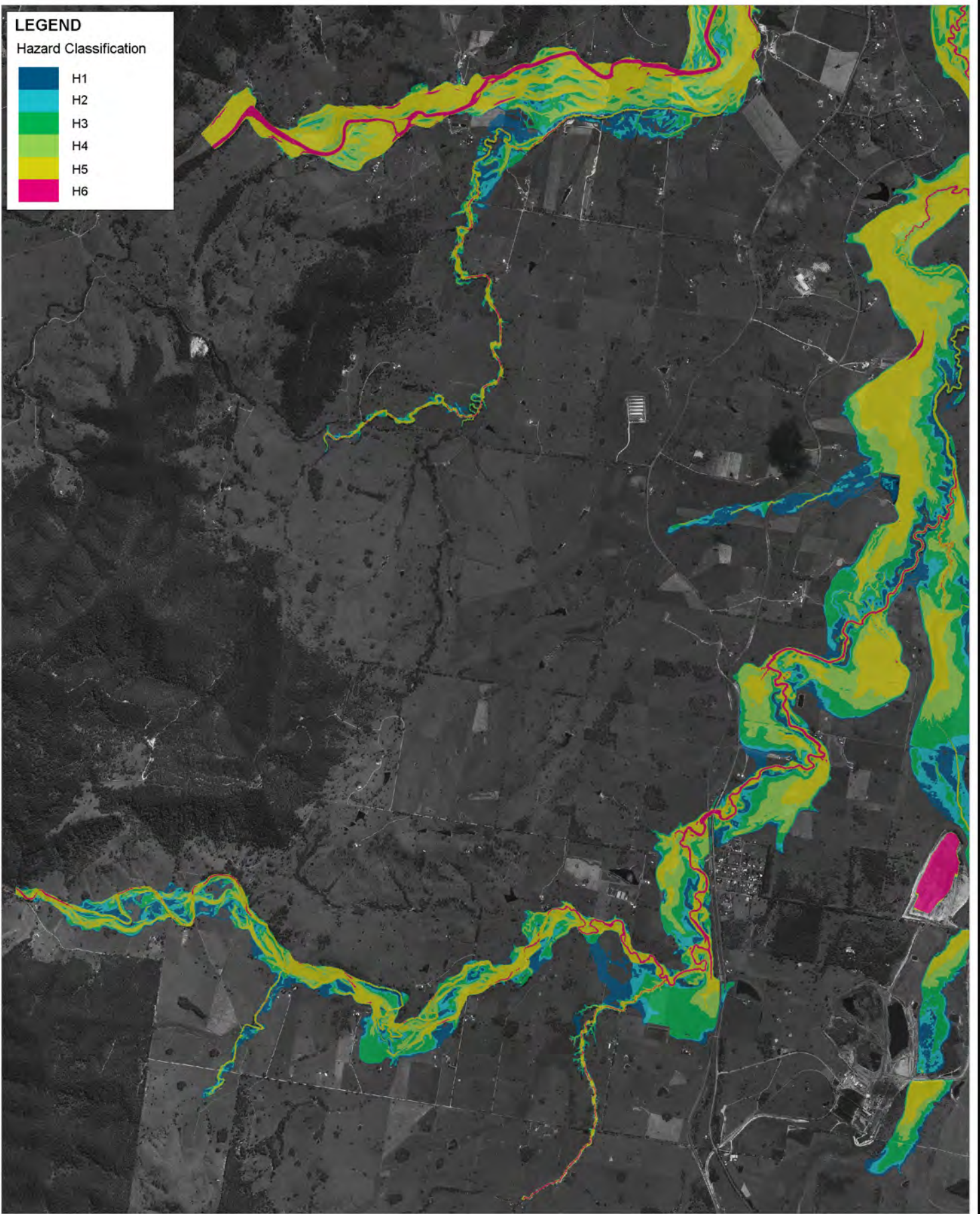


Filepath: K:\N20952_Gloucester_FRMSP\MapInfo\Workspaces\Mapping\DRG_191029_409_PMF_Results.wor

LEGEND

Hazard Classification

-  H1
-  H2
-  H3
-  H4
-  H5
-  H6



Title:
**1% AEP Hazard Classification
Gloucester River / Upper Avon**

Figure:
C-2

Rev:
A

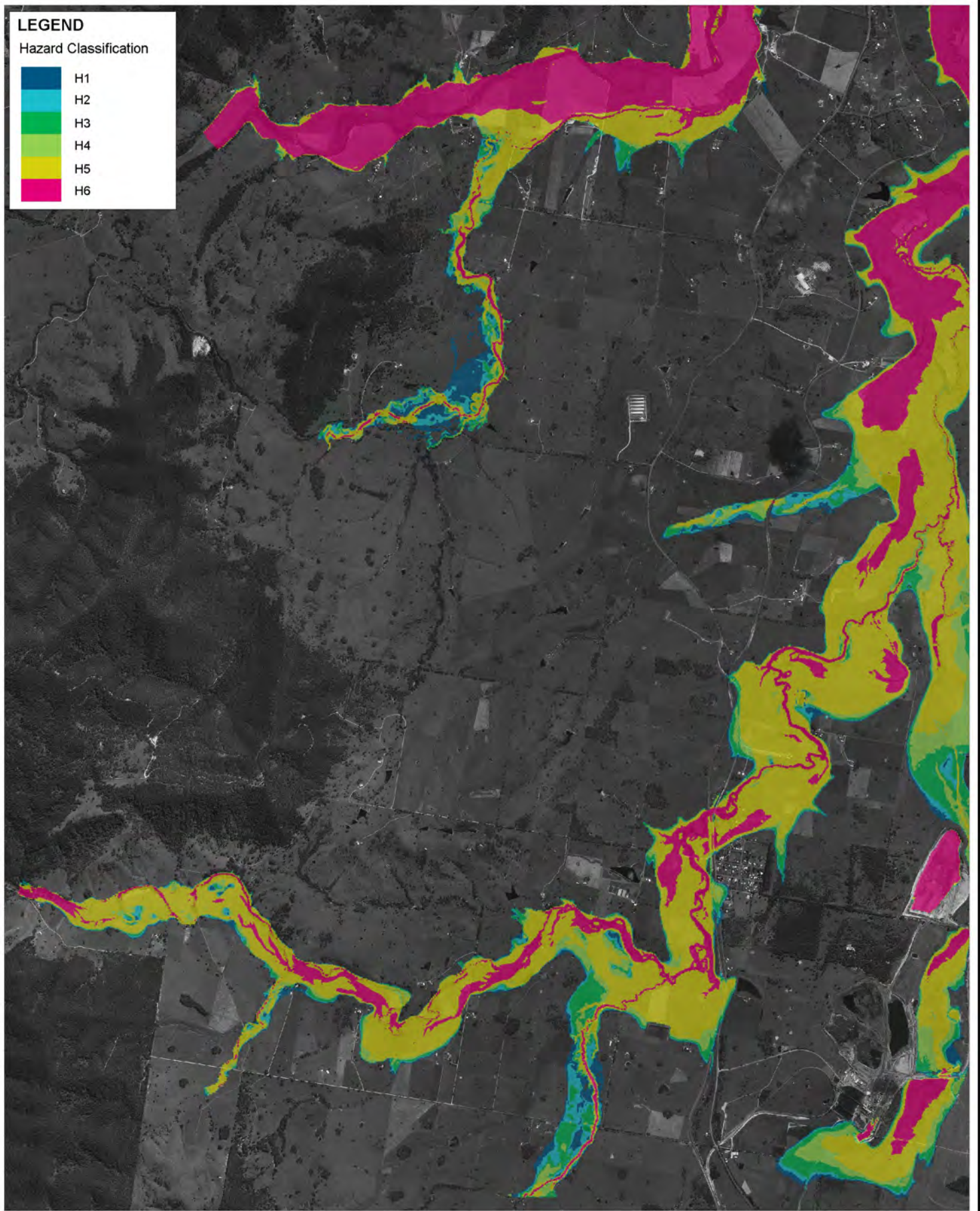
BMT endeavours to ensure that the information provided in this map is correct at the time of publication. BMT does not warrant, guarantee or make representations regarding the currency and accuracy of information contained in this map.



LEGEND

Hazard Classification

- H1
- H2
- H3
- H4
- H5
- H6



Title:
**PMF Hazard Classification
Gloucester River / Upper Avon**

Figure:
D-3

Rev:
A

BMT endeavours to ensure that the information provided in this map is correct at the time of publication. BMT does not warrant, guarantee or make representations regarding the currency and accuracy of information contained in this map.



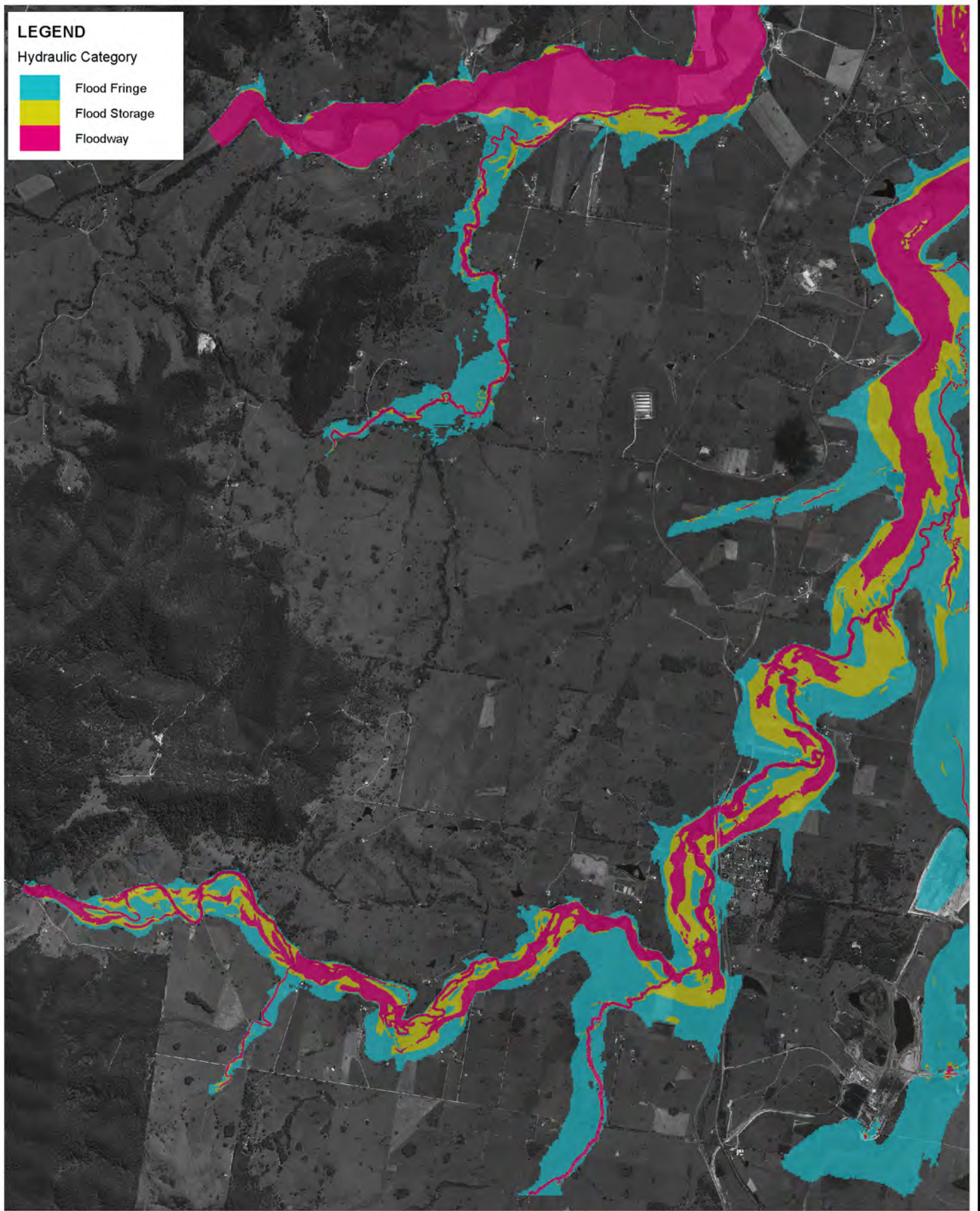
Filepath: K:\N20952_Gloucester_FRMSP\MapInfo\Workspaces\Mapping\DRG_191029_411_PMF_Hazard.wor

LEGEND

Hydraulic Category



- Flood Fringe
- Flood Storage
- Floodway



Title:
**Flood Function
Gloucester River / Upper Avon**

Figure:
D-4

Rev:
B

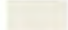
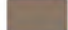







BMT endeavours to ensure that the information provided in this map is correct at the time of publication. BMT does not warrant, guarantee or make representations regarding the currency and accuracy of information contained in this map.

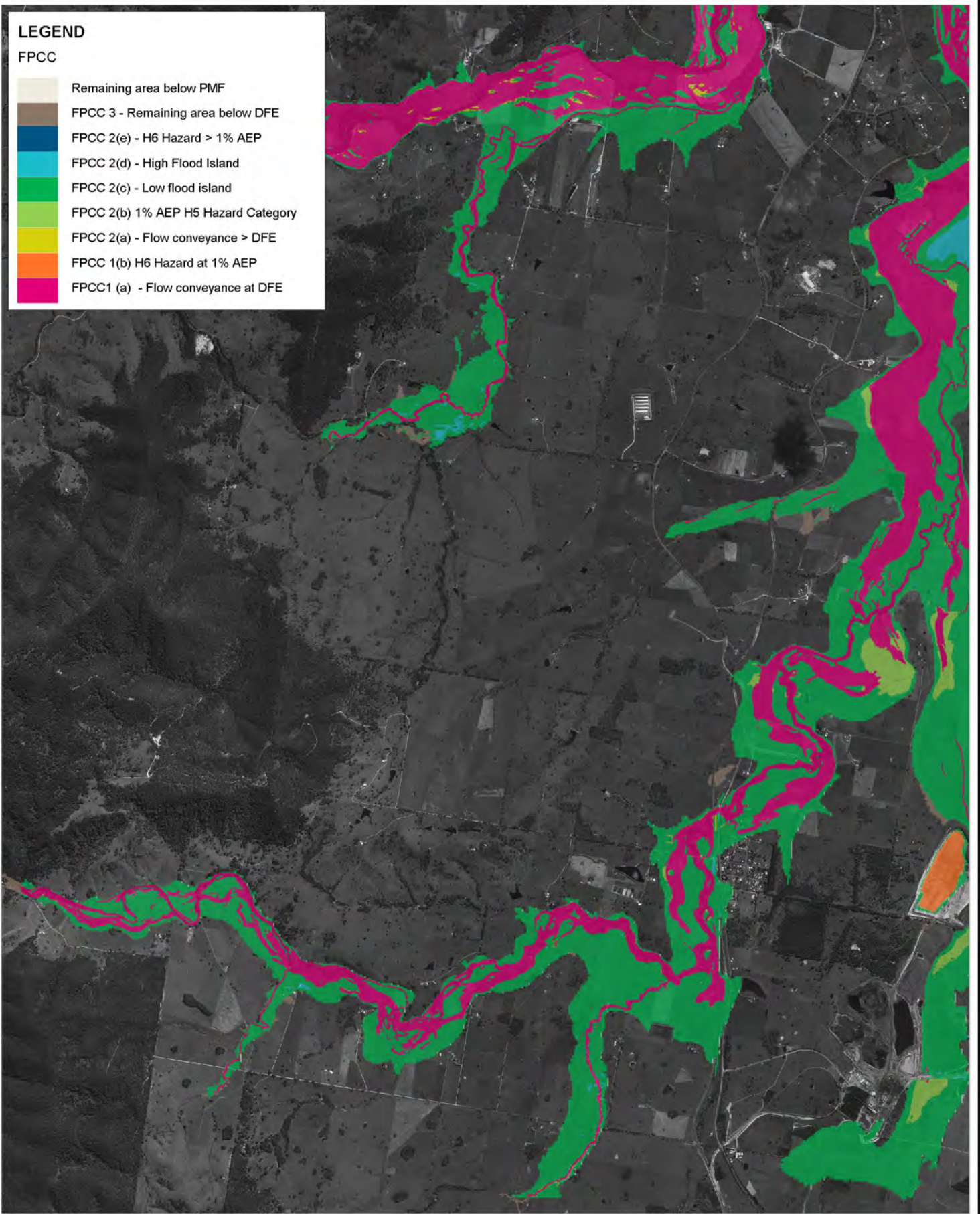


Filepath: K:\N20952_Gloucester_FRMSP\MapInfo\Workspaces\Mapping\DRG_200713_412_Flood_Function.wor

LEGEND

FPCC

-  Remaining area below PMF
-  FPCC 3 - Remaining area below DFE
-  FPCC 2(e) - H6 Hazard > 1% AEP
-  FPCC 2(d) - High Flood Island
-  FPCC 2(c) - Low flood island
-  FPCC 2(b) 1% AEP H5 Hazard Category
-  FPCC 2(a) - Flow conveyance > DFE
-  FPCC 1(b) H6 Hazard at 1% AEP
-  FPCC1 (a) - Flow conveyance at DFE



Title:
**Flood Planning Constraint Categories
Gloucester River / Upper Avon**

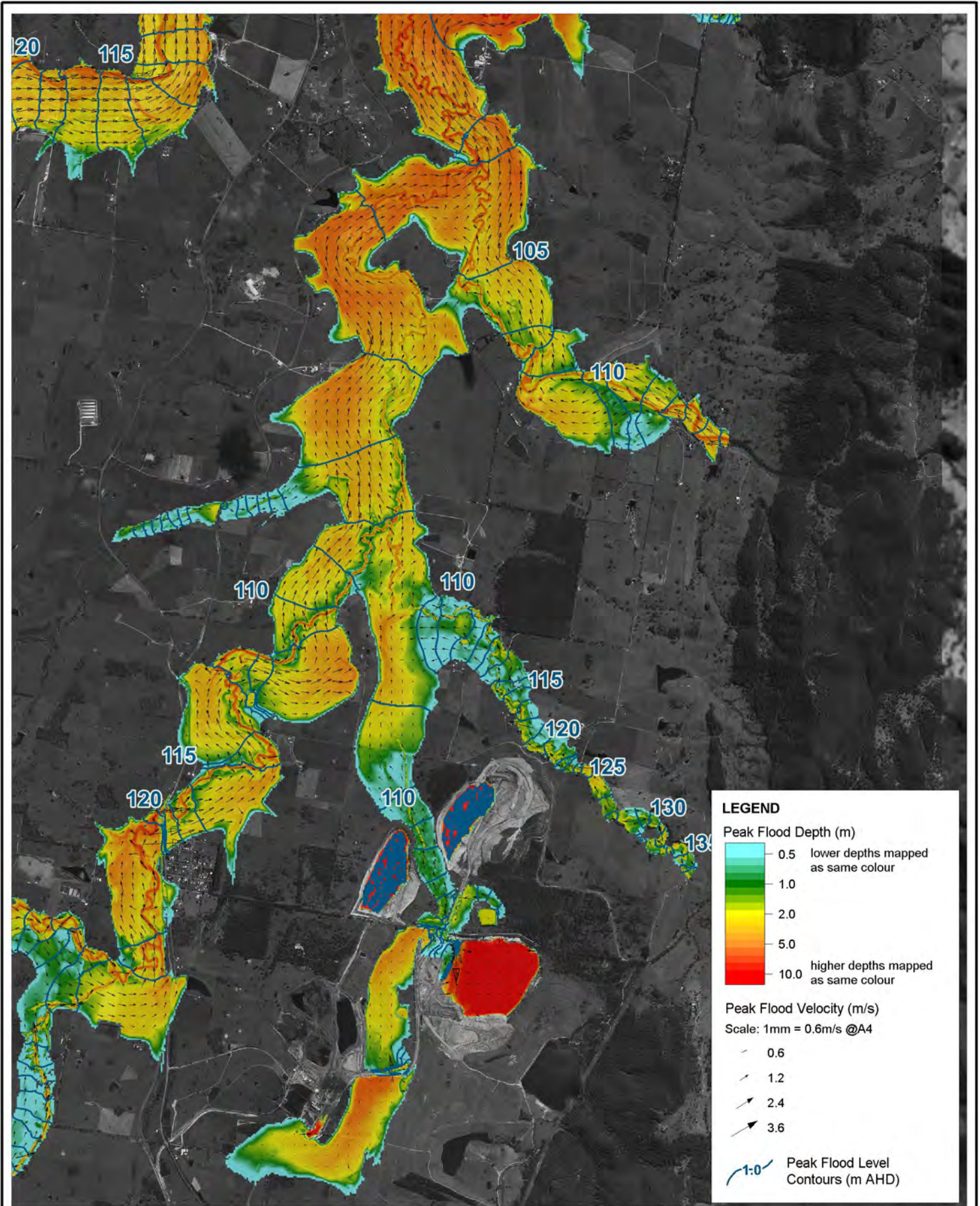
Figure:
D-5

Rev:
A

BMT endeavours to ensure that the information provided in this map is correct at the time of publication. BMT does not warrant, guarantee or make representations regarding the currency and accuracy of information contained in this map.



Filepath: K:\N20952_Gloucester_FRMSP\MapInfo\Workspaces\Mapping\DRG_191029_413_FPCC.wor



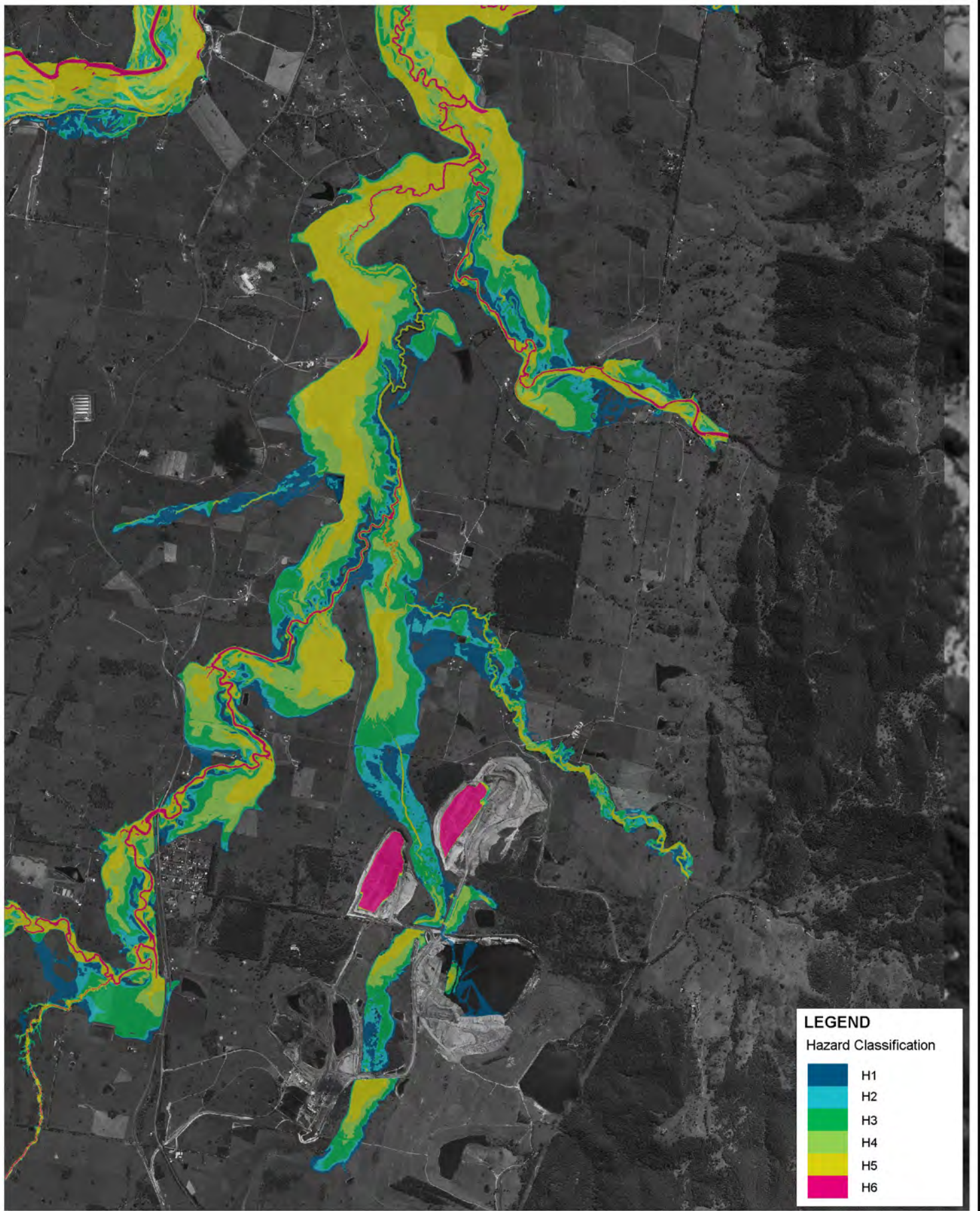
Title:
**PMF Modelled Peak Flood Conditions
 Avon River**

Figure:
E-1







Rev:
A

BMT endeavours to ensure that the information provided in this map is correct at the time of publication. BMT does not warrant, guarantee or make representations regarding the currency and accuracy of information contained in this map.





LEGEND
Hazard Classification

	H1
	H2
	H3
	H4
	H5
	H6

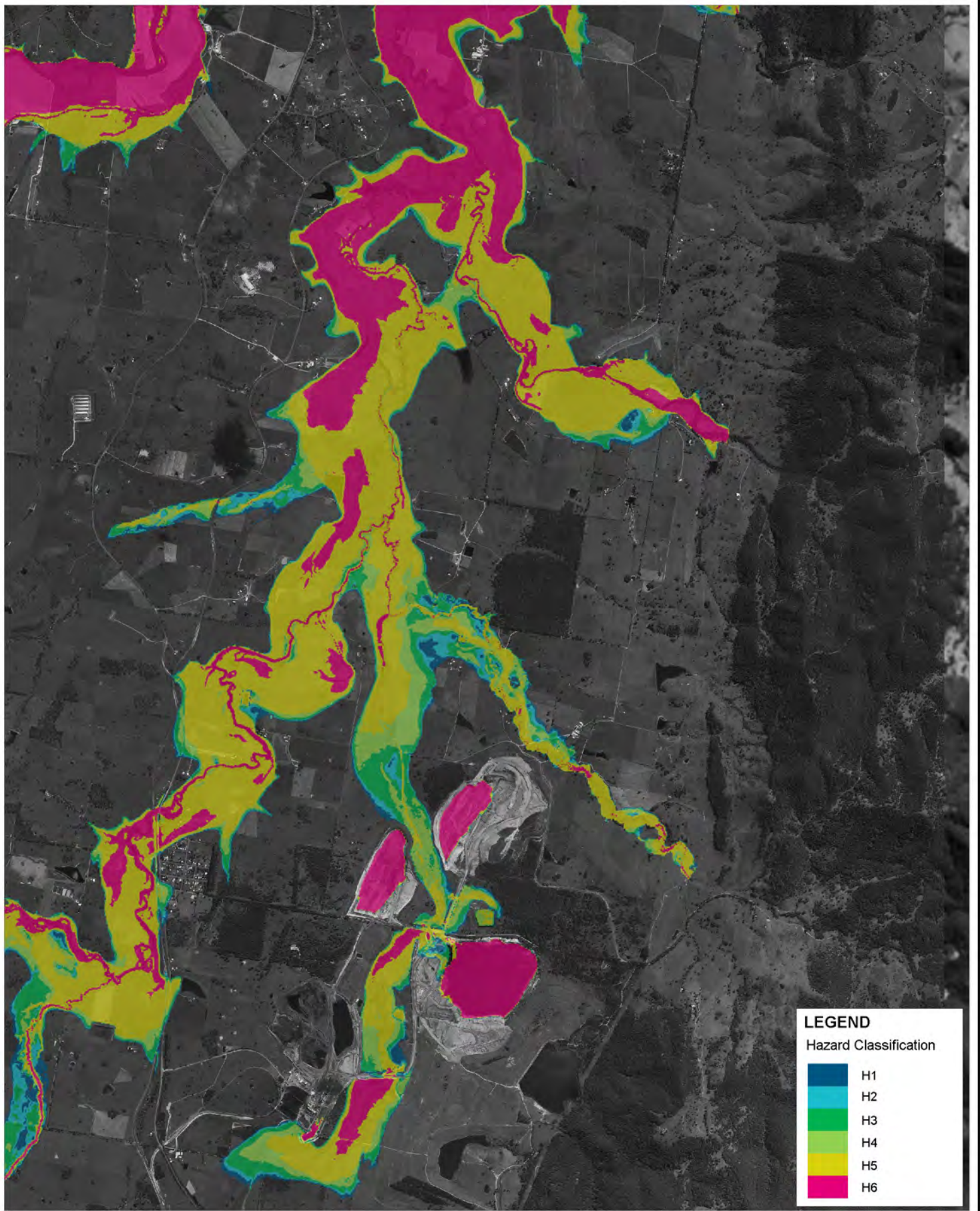
Title:
**1% AEP Hazard Classification
Avon River**

Figure:
E-2







Rev:
A

BMT endeavours to ensure that the information provided in this map is correct at the time of publication. BMT does not warrant, guarantee or make representations regarding the currency and accuracy of information contained in this map.





LEGEND
Hazard Classification

	H1
	H2
	H3
	H4
	H5
	H6

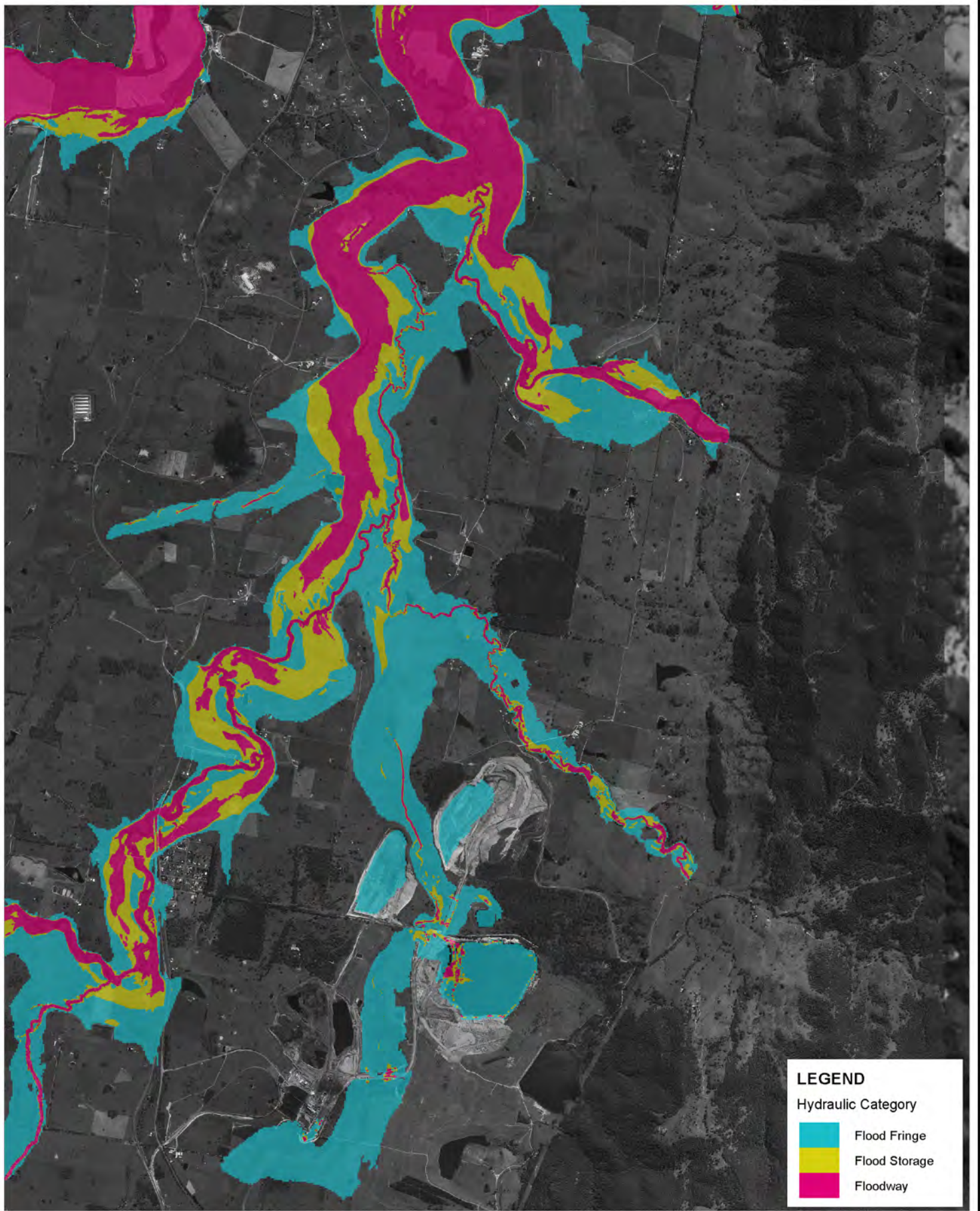
Title:
**PMF Hazard Classification
Avon River**

Figure:
E-3

Rev:
A

BMT endeavours to ensure that the information provided in this map is correct at the time of publication. BMT does not warrant, guarantee or make representations regarding the currency and accuracy of information contained in this map.





LEGEND
 Hydraulic Category

- Flood Fringe
- Flood Storage
- Floodway

Title:
**Flood Function
 Avon River**

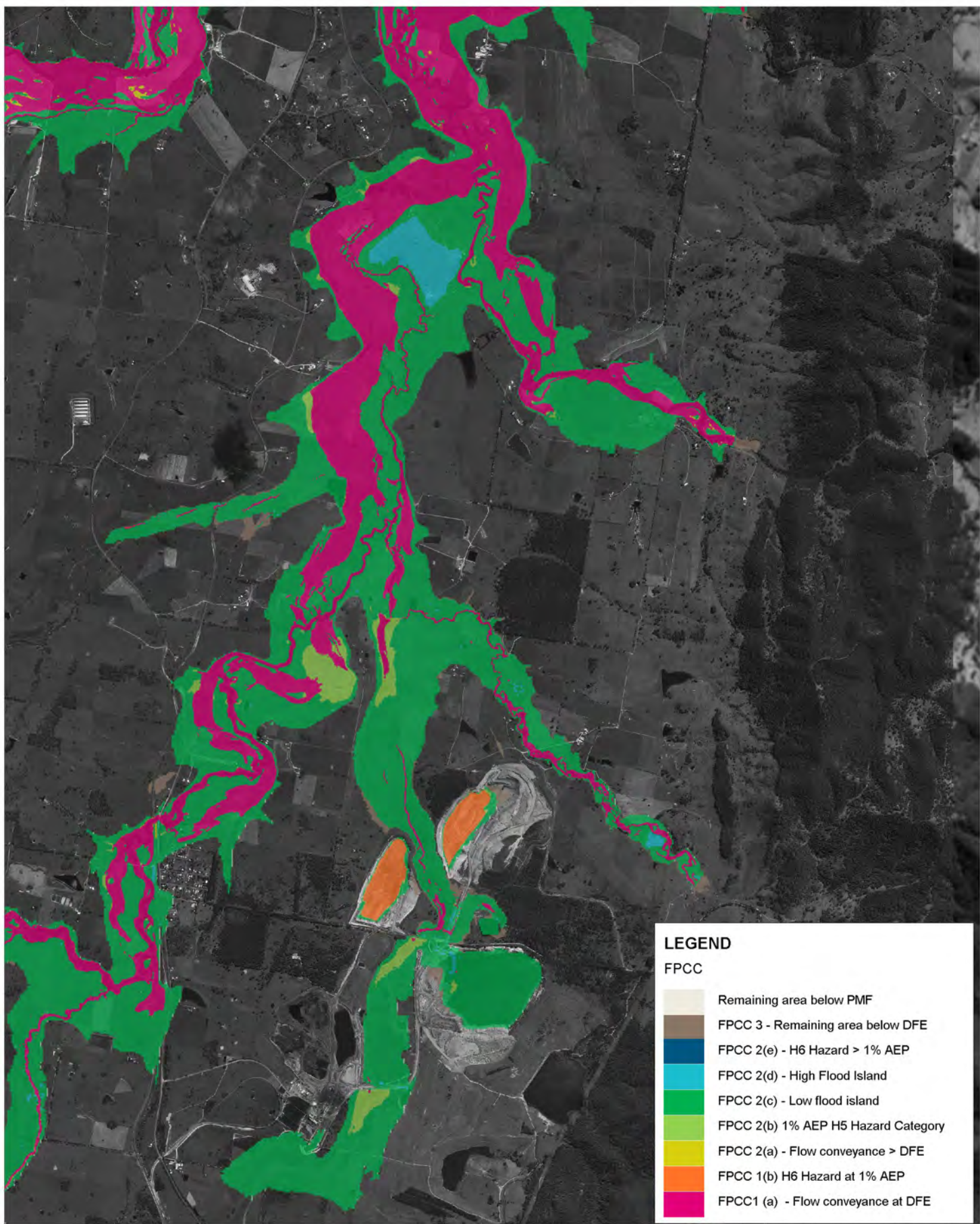
Figure:
E-4

Rev:
B

BMT endeavours to ensure that the information provided in this map is correct at the time of publication. BMT does not warrant, guarantee or make representations regarding the currency and accuracy of information contained in this map.



Filepath: K:\N20952_Gloucester_FRMSP\MapInfo\Workspaces\Mapping\DRG_200713_512_Flood_Function.wor



LEGEND

FPCC

- Remaining area below PMF
- FPCC 3 - Remaining area below DFE
- FPCC 2(e) - H6 Hazard > 1% AEP
- FPCC 2(d) - High Flood Island
- FPCC 2(c) - Low flood island
- FPCC 2(b) 1% AEP H5 Hazard Category
- FPCC 2(a) - Flow conveyance > DFE
- FPCC 1(b) H6 Hazard at 1% AEP
- FPCC1 (a) - Flow conveyance at DFE

Title:
**Flood Planning Constraint Categories
 Avon River**

Figure: E-5	Rev: A
-----------------------	------------------

BMT endeavours to ensure that the information provided in this map is correct at the time of publication. BMT does not warrant, guarantee or make representations regarding the currency and accuracy of information contained in this map.

